

THE **FREE** WESSEX ARTS AND CULTURE GUIDE

# EVOLVER

May and June 2019





# FRESH OFF THE BLOCK 2019



## UWE BRISTOL DEGREE SHOW

Creative Industries  
7–12 June 2019

[uwe.ac.uk/FOTB](http://uwe.ac.uk/FOTB)

City Campus  
Arncliffe  
Bower Ashton  
Spike Island

**UWE  
Bristol** | University  
of the  
West of  
England

# EVOLVER 111

## EXHIBIT A



### ZARA MCQUEEN: 'AS THE CROW FLIES'

Mixed media (120 x 150 cm)

ARTIST'S STATEMENT: "Drawing and painting is part of who I am. It is how I respond to my world. I am driven by mood and intuition. I always begin outside. In that sense I am a landscape painter. Seasonal changes catch my attention and I can rarely resist the changing colours and textures of the natural year. I sketch and paint in watercolour, charcoal or oil then return to the studio where I make larger mixed media pieces guided by memory and feeling. Work gets cut down, torn up, collaged and reformed. Fragments of self portraits often lay hidden in fields, branches or buildings."

#### 'DRAWN IN'

**11 May - 15 June:** Bridport Arts Centre, South Street, BRIDPORT, DT6 3NR. Tuesday - Saturday 10am - 4pm. 01308 424204 / [bridport-arts.com](http://bridport-arts.com).

[zara-mcqueen.co.uk](http://zara-mcqueen.co.uk)

#### EVOLVER

THE WESSEX ARTS AND CULTURE GUIDE

Editor SIMON BARBER

Assisted by SUZY RUSHBROOK

Evolver Writer

FIONA ROBINSON [www.fionarobinson.com](http://www.fionarobinson.com)

Graphic Design SIMON BARBER

Website OLIVER CONINGHAM at AZTEC MEDIA

Front Cover

JEREMY GARDINER: 'WEST BAY IV'

(Painting)

See page 4.

#### EVOLVER MEDIA

8 BUCKLAND ROAD, PEN MILL TRADING ESTATE,  
YEOVIL, SOMERSET BA21 5EA



Email [simon@evolver.org.uk](mailto:simon@evolver.org.uk)

Telephone 01935 808441

Website [evolver.org.uk](http://evolver.org.uk)

Instagram [evolvermagazine](https://www.instagram.com/evolvermagazine)

Twitter @SimonEvolver

Facebook [facebook.com/EvolverMagazine](https://www.facebook.com/EvolverMagazine)

Published by EVOLVER MEDIA LIMITED

Pre-Press by FLAYDEMOUSE

01935 479453 / [flaydemouse.com](http://flaydemouse.com)

Printed by STEPHENS & GEORGE

Distributed by ACOUSTIC

07456 009377 / [everett190@btinternet.com](mailto:everett190@btinternet.com)

DEADLINE FOR EVOLVER 112

July and August 2019

FRIDAY 7 JUNE



# VISUAL ARTS

May and June 2019



JEREMY GARDINER 'KIMMERIDGE BAY AS SEEN FROM CLAVELL TOWER IV'

## JEREMY GARDINER AND AKIKO HIRAI

Jeremy Gardiner is a highly acclaimed painter who has long been inspired by the Dorset coast. He joins the gallery with a magnificent collection of his experimental multi-layered paintings, including a series of works on paper plus a selection of paintings on panel.

He shows alongside Akiko Hirai, one of the leading ceramic artists in this country. Her highly individual instantly recognisable

work is collected nationally and internationally and seems to answer a need in this age of mass-production and consumerism.

Both artists are concerned with time and the history of art in their work. In a nod to Hiroshige, Jeremy Gardiner has painted 20 *Stations of the Dorset Coast* in his distinctive style which takes forward the ideas of pioneering landscape artists such

as John Tunnard, Ben Nicholson, Peter Lanyon and Richard Diebenkorn. Each of Jeremy Gardiner's paintings combines many visits in different weather and light and many different ideas and reflections to create a composite, three-dimensional impression of the experience of being in that place. To the contemporary view Gardiner brings the awareness of the geology, the billions of tiny creatures whose bodies made up the chalk on this Jurassic coastline, along with the effects of weather and time on that geology.

Akiko Hirai's sublime ceramics seem to emerge both ancient and of this moment. Inspired by ancient Korean ceramics and moon jars from the British Museum, by the Industrial Revolution, the paintings of Morandi and by the ponds, seed heads and surfaces of the natural world, her textured thoughtful works have a true beauty and resonance.

**11 May - 30 June:** Sladers Yard, WEST BAY, Bridport, DT6 4EL. Monday - Saturday 10am - 4.30pm, Sunday and Bank Holiday 12noon - 4.30pm. 01308 459511 / [sladersyard.co.uk](http://sladersyard.co.uk).



AKIKO HIRAI 'INDUSTRIAL BOWL'



# VISUAL ARTS

## BARBARA KARN: 'COURSE OF EVENTS'

**Until 4 May**

ACE Arts, Market Place, SOMERTON, TA11 7NB. Tuesday - Saturday 10am - 5pm. [acearts.co.uk](http://acearts.co.uk). "A celebration of movement, change and the ground beneath our feet."

## 'I WELCOME'

**Until 4 May**

Exeter Community Centre, 17 St David's Hill, EXETER, EX4 3RG. Monday - Saturday 9am - 6pm. 01392 420549 / [eccentre.org](http://eccentre.org). "Photographs of refugee crises past and present."

## EXHIBITION

**Until 5 May**

Milking Farm Gallery, Guggleton Farm, Station Road, STALBRIDGE, DT10 2RQ. Tuesday - Sunday 11am - 3pm. [guggletonfarmarts.com](http://guggletonfarmarts.com). "Exhibition celebrating themes of rebirth and emergence featuring work by Carolyn Corlett, Cliff Free, Zara McQueen, Agnes Pollock, Ethne Read, Tom Schreiber, Noah Warnes, and Alex Williams."



## 'CERTAINE WYTTCHES FEAR, MYTH AND MAGIC'

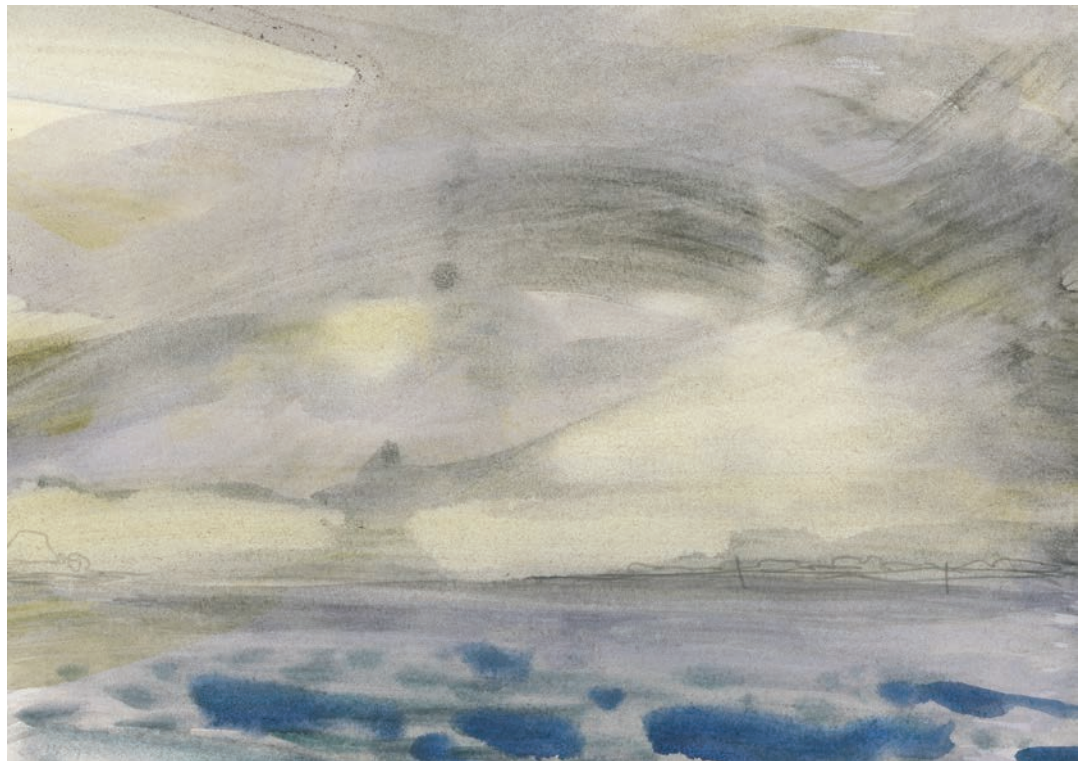
**Until 6 May**

Devon Guild of Craftsmen, Riverside Mill, BOVEY TRACEY, Devon, TQ13 9AF. 10am - 5.30pm. 01626 832223 / [crafts.org.uk](http://crafts.org.uk). "Through a series of large and small-scale knotted tapestries, artist Anne Jackson explores the ideas of witchcraft and historic witch-persecution across Europe, both as commemoration and as a metaphor for our contemporary fears."

## LEONARDO DA VINCI: 'A LIFE IN DRAWING'

**Until 6 May**

Bristol Museum & Art Gallery, Queens Road, BRISTOL, BS8 1RL. Tuesday - Sunday 10am - 5pm. £6 / £5. 0117 922 3571.



'DETAIL FROM SHARD POINT SKETCHBOOKS, BROWNSEA ISLAND' (Watercolour and graphite, 2016)

## SARAH HOUGH: MOMENT

"What would it feel like to be free of distraction and completely immersed in a moment? *Moment* is an installation that places you at the heart of large-scale 3D oil paintings, projected drawings and sound. This body of work is the result of making the journey to Shard Point on Brownsea Island, Poole Harbour once a week, every week over the course of a year. The journey was undertaken through the seasons whatever the weather in order to collect moments experienced in this landscape. Come and savour the *Moment* for yourself in the main gallery, then share your moment with us on Instagram using #themomentlibrary."

**4 May - 3 August:** Main Gallery, Lighthouse, 21 Kingland Road, POOLE, BH15 1UG. Tuesday - Saturday 10am - 9pm. 01202 280000 / [lighthousepoole.co.uk](http://lighthousepoole.co.uk).

## CATHERINE GOODMAN: 'EVE'

**Until 6 May**

Hauser & Wirth Somerset, Durslade Farm, Dropping Lane, BRUTON, BA10 0NL. Tuesday - Sunday 10am - 5pm (March - October), Tuesday - Sunday 10am - 4pm (November - February). 01749 814060. "Catherine Goodman's practice includes expressionistic landscapes, vigorous sketches, experimental collages and portraits. Central to her process is the act of drawing from observation, whether from life, objects or the great masters and their works."

## MATTHEW DAY JACKSON: 'PATHETIC FALLACY'

**Until 6 May**

Hauser & Wirth Somerset, Durslade Farm, Dropping Lane, BRUTON, BA10 0NL. Tuesday - Sunday 10am - 5pm (March - October), Tuesday - Sunday 10am - 4pm (November - February). [hauserwirth.com/somerset](http://hauserwirth.com/somerset). "Works conceived during Matthew Day Jackson's time as artist-in-residence at Hauser & Wirth Somerset from August 2018 until January 2019. Painting, drawing, sculpture, furniture, and installation."

## GEORGE SHAW: 'A CORNER OF A FOREIGN FIELD'

**Until 6 May**

Holburne Museum, Great Pulteney Street, BATH, BA2 4DB. Monday to Saturday 10am - 5pm, Sunday 11am - 5pm. £11 / £5.50. 01225 388569 / [holburne.org](http://holburne.org).

## BRIAN GRAHAM: 'THE GREAT HEATH'

**Until 6 May**

Sladers Yard, WEST BAY, Bridport, DT6 4EL. Monday - Saturday 10am - 4.30pm, Sunday 12noon - 4.30pm. 01308 459511 / [sladersyard.co.uk](http://sladersyard.co.uk).



Thelma Hulbert Gallery

## Paper Play exhibition

25 May - 22 June 2019

Thelma Hulbert Gallery, Elmfield House, Dowell Street, Honiton, Devon, EX14 1LX  
01404 45006 [info@thelmahulbert.com](mailto:info@thelmahulbert.com) [www.thelmahulbert.com](http://www.thelmahulbert.com)

Open: Tues - Sat 10am - 5pm | Free Admission, Donations welcome

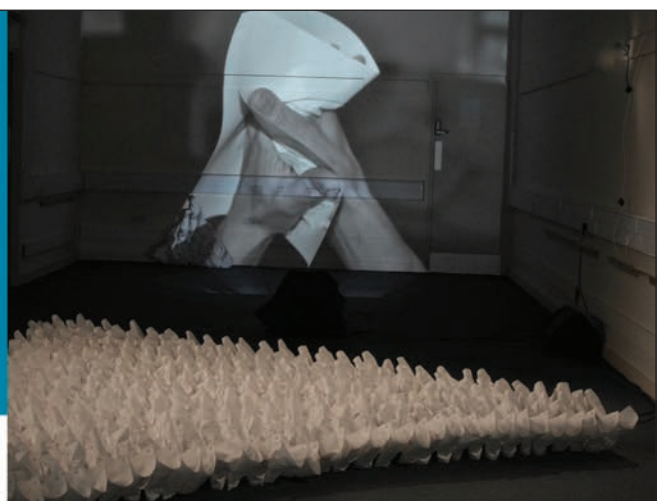














Celebrating 25th Anniversary at the Malthouse Gallery

# Reflections

## A Fresh Look

New work from New York, Havana, Mediterranean and South West England by

**MOISH SOKAL**

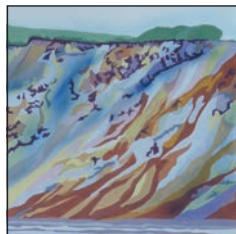


Sunny Smile

Watercolour 12" x 16"

## The Malthouse Gallery

East Lambrook Manor Gardens, Somerset TA13 5HH  
4th June - 21st July • 10am - 5pm • Tuesday to Sunday  
Mob 07812 837825 • [www.moishsokal.co.uk](http://www.moishsokal.co.uk)



## The Jurassic Coast and Other Rocks

PAINTINGS BY **SALLY MALTBY**

**Saturday 27 April - Friday 11 May**

Fine Foundation Gallery, Durlston Country Park,  
Lighthouse Road, Swanage, BH19 2JL  
10am - 4pm / Free entry / 01929 424443  
[sallymaltby.co.uk](http://sallymaltby.co.uk)



# ROBIN MACKENZIE

## 'Impressions'



Prints and Inspirations

**13TH APRIL - 19TH MAY 2019**

Walford Mill Crafts  
Knobcrook Road, Wimborne, Dorset BH21 1NL  
[www.walfordmillcrafts.co.uk](http://www.walfordmillcrafts.co.uk) 01202 841400

**walford**  
crafts



## VISUAL ARTS



## OH, THERE'S A FACE

"Kay Lewis-Bell presents large scale drawings of everyday faces, hung as crowds that will watch you as you watch them."

**11 May - 8 June:** ACE Arts, Market Place, SOMERTON, TA11 7AT.  
Tuesday - Saturday 10am - 5pm. 01458 273008 / [acearts.co.uk](http://acearts.co.uk).

### 'PRINTS'

**Until 7 May**

John Leach Gallery, Muchelney Pottery,  
MUCHELNEY, near Langport, TA10  
0DW. Tuesday - Saturday 10am - 1pm  
and 2 - 4pm. 01458 250324. "Original  
prints by Somerset printmakers Julia  
Manning, Ann Fagan, Jenny Graham  
and Jackie Curtis."

### LOUISE BOURGEOIS

**Until 7 May**

Victoria Art Gallery, Pulteney Bridge,  
BATH, BA2 4AT. 10.30am - 5pm. £5 /  
£4.50. [victoriagal.org.uk](http://victoriagal.org.uk). "Prints by  
Louise Bourgeois (1911 - 2010), best  
known for her powerful, emotionally  
charged sculptures, steel cage  
installations and fabric figures."

### SOUTH SOMERSET MONOCHROME:

**'VIEWPOINTS'**

**Until 7 May**

The Octagon Theatre, Hendford,  
YEOVIL, BA20 1UX. Monday - Saturday  
12noon - 5pm. 01935 422884.

"Comprising 60 black and white  
photographs this exhibition is an  
eclectic mix of high quality images  
showcasing the work of members of  
the South Somerset Monochrome  
group of photographers."

### 'ENDANGERED AND EXTINCT:

**CREATIVE RECYCLING'**

**Until 7 May**

Victoria Art Gallery, Pulteney Bridge,  
BATH, BA2 4AT. 10.30am - 5pm. 01225  
477233. "Large and small sculptural  
pieces by Val Hunt."

### 'SHARMANKA TRAVELLING CIRCUS'

**Until 7 May**

Victoria Art Gallery, Pulteney Bridge,  
BATH, BA2 4AT. 10.30am - 5pm. £5 /  
£4.50. [victoriagal.org.uk](http://victoriagal.org.uk). "Sound and  
movement combine with striking  
images to make for a humorous and,  
at times macabre experience."

### 'HEADING WEST'

**Until 11 May**

Tincton Gallery, The Old School  
House, TINCLETON, near Dorchester,  
DT2 8QR. Friday - Monday 10am -  
5pm. [tinctongallery.com](http://tinctongallery.com). "Work by  
Ruth Ander, Jazmin Velasco, Kim  
Pragnell, Mary Gillett, Philippa Headley,  
Jenny Sutton, and Angelika Seik."

### ANDREW BUTLER: 'REMEDY'

**Until 11 May**

Lighthouse, 21 Kingland Road, POOLE,  
BH15 1UG. Tuesday - Saturday 10am -  
9pm. [lighthousepoole.co.uk](http://lighthousepoole.co.uk).

### Contemporary Interiors in Wood

5 rooms full of unique wood work from over 200 craftsmen working in the UK.

Ranging from kitchenware to one-off jewellery boxes and furniture.

Coffee shop and small children's play area.

Rodden Row, Abbotsbury, DT3 4JL  
[www.danselgallery.co.uk](http://www.danselgallery.co.uk)

01305 871515  
Open 10am - 5pm every day



# VISUAL ARTS

## 'THE SPRING EXHIBITION'

**Until 11 May**

The Gallery at 41, 41 East Street, CORFE CASTLE, BH20 5EE. Tuesday - Saturday 11am - 4pm. 01929 480095 / galleryat41.com. "Paintings by David Atkins, Felicity House, Richard Price, Judy Tate, Edward Vine, Vicky Finding, Rob Adams, Roger Dell Seddon, Lawrence Quigley, and Angela Holland, with sculpture by Moira Purver, Sue Lansbury, Brendon Murless, and Laura Pentreath."



## SALLY MALTBY: 'THE JURASSIC COAST AND OTHER ROCKS'

**Until 11 May**

Fine Foundation Gallery, Durlston Country Park, Lighthouse Road, SWANAGE, BH19 2JL. 10am - 4pm. 01929 424443 / 07796 462934 / sallymaltby.co.uk. "Unique watercolour paintings of the geology of the Jurassic coast, together with digital images of other rocks."



## BRISTOL SAVAGES

**Until 11 May**

The Red Lodge, Park Row, BRISTOL, BS1 5LJ. 10am - 4.45pm. 0117 927 3807 / bristol-savages.org.uk. "The 109th annual exhibition of approximately 120 professional paintings by some of Bristol's best-loved artists, including Michael Long, Tony Pace, John Edwards and Tim Wilmot."

Above: Vincent Neave 'Reefed Down'



'NORTHERN LIGHT'

## PINE FERODA

"Pine Feroda are a unique collective of four professional printmakers who together create dramatic large scale woodcuts inspired by the rugged coastline of Hartland."

**Until 9 June:** The Whittox Gallery, Rise, Whittox Lane, FROME, BA11 3BY. Tuesday - Friday 9am - 5pm, Saturday and Sunday 10am - 5pm. 07712 523734 / risefrome.com.

## GREENFYLDE SCHOOL

**Until 11 May**

Ilminster Arts Centre, The Meeting House, East Street, ILMINSTER, TA19 0AN. Monday - Friday 9.30am - 4.30pm, Saturday 9.30am - 2.30pm. themeeetinghouse.org.uk. "Work by pupils in a variety of mediums."

## DAVID SMITH AND SHARON JAMES: 'TRACES'

**Until 11 May**

L'Artishe Gallery, 71 High Street, SWANAGE, BH19 2LY. Tuesday, Thursday, Friday and Saturday 10am - 5.30pm. 01929 425050 / lartishegallery.com. "In their work, Sharon James and David Smith both explore the traces of things past and endeavour to create something more beautiful from subjects that are sometimes not so pretty."

## 'CHINA THROUGH THE LENS OF THE RUSSELL- COTES'

**Until 12 May**

Russell-Cotes Art Gallery and Museum, BOURNEMOUTH, BH1 3AA. Tuesday - Sunday 10am - 5pm. £7.50. russellcotes.com. "Merton and Annie Russell-Cotes visited China in 1885 and bought many objects, including swords, carvings and ceramics, the basis for the Russell-Cotes Chinese collection, augmented since by further collecting."

## 'MASTERS OF JAPANESE PRINTS: LIFE IN THE CITY'

**Until 12 May**

Bristol Museum & Art Gallery, Queens Road, BRISTOL, BS8 1RL. Tuesday - Sunday 10am - 5pm. 0117 922 3571 / bristolmuseums.org.uk. "Original woodblock prints from Bristol Museum's significant collection."



## STEWART GEDDES

**Until 15 May**

Andelli Art, Mendip House, Upper Breach, SOUTH HERRINGTON, Wells, BA5 3QG. Tuesday - Saturday 10am - 6pm. 01749 572373 / andelliart.com. "Stewart's distinctively urgent style demonstrates his passion for colour and textural surfaces."

INTRODUCING THE

# BLACK SWAN GUILD

4 - 25 MAY 2019  
PREVIEW 3 MAY 6-8PM  
ALL WELCOME

1 - 30 June 2019

all things  
being equal

sandra porter

FEATURING JEWELLERY,  
SCULPTURE, CERAMICS,  
PRINTMAKING, PAINTING  
& TEXTILES

OPEN: Mon - Sat 10am-4pm  
and Independent Market Sundays  
Registered Charity No.292463

galleries | studios | shop | cafe  
2 Bridge Street, Frome BA11 1BB  
01373 473980 | www.blackswanarts.org.uk

**BLACKSWANARTS**

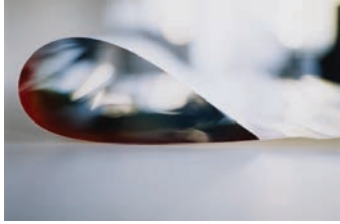


# VISUAL ARTS

## 'A VISUAL FEAST OF FOOD'

**Until 15 May**

Hatch Gallery, 7a Church Street, CHRISTCHURCH, BH23 1BW. Tuesday - Saturday 10.30am - 4pm. 07787 517958 / hatchgallery.co.uk. "Exhibiting artists include Christopher Kettle, Sarah Honeywill, and Jane Boswell."



## 'ON PAPER'

**Until 18 May**

Thelma Hulbert Gallery, Elmfield House, Dowell Street, HONITON, EX14 1LX. Tuesday - Saturday 10am - 5pm. 01404 45006 / thelmahulbert.com. "Arts Council Collection Touring Exhibition showcasing the work of acclaimed 20th-century and contemporary artists exploring how they have used paper as the focus of their work."

Above: Wolfgang Tillmans 'Paper Drop (London)' (2008, © the artist. Courtesy Arts Council Collection, Southbank Centre, London

## GORDANO TEXTILE ARTISTS: 'VIEWPOINT'

**Until 18 May**

Bristol Guild Gallery, Bristol Guild, 68 Park Street, BRISTOL, BS1 5JY. Monday - Saturday 10am - 5pm. bristolguildgallery.co.uk / gordanotextileartists.co.uk. "Eleven artists from Bristol and the surrounding area interpret 'Viewpoint' through contemporary textile art."

## ANTHONY DOVER

**Until 18 May**

Mezzanine Gallery, Lighthouse, 21 Kingland Road, POOLE, BH15 1UG. Tuesday - Saturday 10am - 9pm. lighthousepoole.co.uk. Paintings.

## ROBIN MACKENZIE: 'IMPRESSIONS'

**Until 19 May**

Walford Mill Crafts, Knobcrook Road, WIMBORNE, BH21 1NL. Tuesday - Saturday 10am - 5pm, Sunday 11am - 4pm. walfordmillcrafts.co.uk. "Walford Mill Crafts' resident printmaker Robin Mackenzie creates detailed wood engravings and vinyl cuts inspired by Dorset's Jurassic Coast and works as an illustrator specialising in printmaking."



'EXOTIC TABLE' (Oil on canvas, 1994)

## ALAN DAVIE

Modest in size but far from modest in ambition Tincleton Gallery has a developing reputation for its concert series hosting pianists of international stature such as Angela Brownridge, Ronan Magill and John Law. The jazz connection leads neatly into their next significant project, an important exhibition of work by the abstract painter Alan Davie (1920 - 2014). Jazz was one of Davie's lifelong passions and alongside poetry and Zen Buddhism it was integral to his life and work as an artist. His engagement as a performer with the essential improvisation in jazz can be seen directly in that same improvisatory element in his paintings.

Davie was born in Scotland and attending Edinburgh School of Art struggled to find his way. A visit to the Venice Biennale in 1948, where he was exposed to the work of Rothko, Motherwell and Pollock and other Abstract Expressionists, had a profound effect on his artistic development. He subsequently met Jackson Pollock in New York.

The physicality of his working process is evident in the generous full brushstrokes of paint which often dominated the canvases of his early years. There are echoes of De Kooning in his handling of paint and his exuberant mark-making packs the pictorial space. He incorporates letters, symbols and biomorphic forms reminiscent of Joan Miro and Arshile Gorky and his narratives have an affinity with the shamanistic leanings of Marc Chagall and Vassily Kandinsky. This selection of work tends towards works with graphic markings and a suggestion of the symbolism of Paul Klee, whose work he saw in Venice in 1948.

Withdrawing somewhat from the art world in his later years Davie nevertheless continued to paint, although work from this period has not had much exposure. Consequently this small exhibition of around twenty paintings, gouaches and ink drawings from the 1980s until his death, selected from a private collection, is significant.

Fiona Robinson

**17 May - 7 July:** Tincleton Gallery, TINCLETON, Dorchester, DT2 8QR. Friday - Monday 10am - 5pm. 01305 848909 / tincletongallery.com.

## SALISBURY GROUP OF ARTISTS:

### 'PICTURE SALISBURY'

**Until 21 May**

Arundells, 59 The Close, SALISBURY, SP1 2EN. Saturday - Wednesday 11am - 4.30pm. £3.50. 01722 326280 / salisburygroupofartists.co.uk. "40 works depict Salisbury and the surrounding countryside."

## WIMBORNE CREATIVES: 'DRAWN TO PAINT'

**Until 24 May**

Learning & Resource Centre, 41 - 44 King Street, WIMBORNE, BH21 1EB. Monday - Friday 9am - 4pm. 01202 847600. "Group exhibition of recent drawings and paintings demonstrating individuality of style and subject."



## THE BRITISH WILDLIFE PHOTOGRAPHY AWARDS

**Until 31 May**

The Red Brick Building and Bocabar, Morland Road, GLASTONBURY, BA6 9FT. 10am - 5pm. 01458 899564 / redbrickbuilding.co.uk. "A national exhibition celebrating both the work of amateur and professional photographers and British wildlife. Winning images are chosen from thousands of entries in fifteen separate categories."



## MIDLAND POTTERS ASSOCIATION: 'BURNT OFFERINGS'

**Until 1 June**

The Pound, Pound Pill, CORSHAM, SN13 9HX. 9.30am - 4pm. 01249 701628. "The Midlands Potters Association is a vibrant organisation with over 135 members. 'Burnt Offerings' will present a large collection of ceramics by artists, selected by a professional judging panel."



# THE CREATIVE GALLERY

Showcasing ceramics, paintings, photography, jewellery and glass by local artists



**"Suzette Knight - Ceramics"**  
1st-31st May



**"Our Jurassic Coast"**  
Tony Cowburn  
1st-30th June

St John's Hill, Wareham, Dorset BH20 4NB t 01929 551700 e fiona@creativegallerywareham.co.uk

**Open 10am-5pm Monday to Saturday, daily from 26th May**

**Purbeck Arts Weeks: 26th May-9th June**





## Black Is Not The Only Colour

Studio exhibition 14, 15 & 16 June 2019

#BlackSquares365 & other Black Squares work

# DAVID | SMITH

07778 981510 | art@davidsmithartist.net

ig: david\_smith\_artist | tw: @DavidSmithArt | w: davidsmithartist.net

Studio 7B, Second Floor, Riverside Studios

Unit 10 St Michael's Trading Estate, Bridport, Dorset, DT6 3RR



## FIFTY FIELDS AMANDA WALLWORK

Open studio exhibition showing 50 small paintings of fields based on research for the South Dorset Ridgeway map series, plus other new work, including *Lost Fields of Portland*

**Saturday 25 and Sunday 26 May**

11am - 5pm (Other times by appointment: 07816 224015)

Top Floor Studio, The Old Timberyard, West Bay Road,  
West Bay, Dorset DT6 4EL

Instagram: @amanda\_wallwork

Website: amandawallwork.com

**HESTERCOMBE GALLERY**  
Contemporary art in reclaimed spaces

09.03.19 - 30.06.19

## Elsewhen

A solo exhibition  
by Simon Faithfull

hestercombe.com

Image: 'Quenarville as Antipode' (detail), slideshow + 11 digital prints, 2014





# colouration II

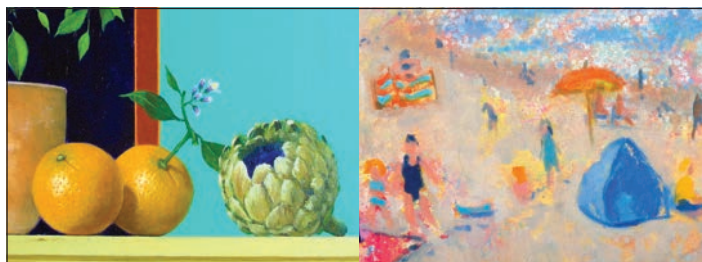
five Dorset artists in a further  
collaboration of colour

Sue Barnes Malcolm Giladgian Zee Jones  
Chris Neaves Chris Wilmshurst

each determined to make a  
colourful impression

**Eype Centre for the Arts**

Saturday 11<sup>th</sup> to Sunday 19<sup>th</sup> May 10.30 – 4.30



## Sense of Place

Oil paintings by Clive Melbourne and Sue Detain

The Malthouse Gallery, East Lambrook Manor Gardens,  
South Petherton, Somerset TA13 5HH

Open 10am to 5pm, Saturday 18 May to Wednesday 29 May 2019  
Closed 20 May 2019. Free entry.



PURBECK NEW WAVE GALLERY  
SWANAGE



### ART GALLERY

Pictures, ceramics and more for you  
and your home

### ARTISTS AT WORK

Owner Gina Marshall and fellow artists

### ART CLASSES

Art courses, art workshops, pottery  
classes

### ROOM HIRE

Open 10am - 5pm daily

25 Commercial Road, Swanage,  
Dorset BH19 1DF (next to Chococo)

[www.purbecknewwave.co.uk](http://www.purbecknewwave.co.uk)

07434 814384

[purbecknewwave@gmail.com](mailto:purbecknewwave@gmail.com)



## Tincleton Gallery

contemporary fine art in Dorset

### Alan Davie: Magical Transformations

Alan Davie (1920 – 2014)

Friday 17th May – Sunday 7th July

Works from a private collection showcasing the last three decades of Alan Davie's long painting career



*Magical Transformation of Moonlight, 1998*



*Cosmographie Structures No. 9, 1993*

The Old School House, Tincleton, near Dorchester, DT2 8QR • Friday / Saturday / Sunday / Monday • 10am – 5pm  
01305 848909 • [www.tinctongallery.com](http://www.tinctongallery.com)





## 'EDITIONS'

**Until 1 June**

Kobi & Teal, 57 Catherine Street, FROME, BA11 1DA. Wednesday - Saturday 10am - 4.30pm. 07737 367419 / kobiandteal.co.uk. "An exhibition to celebrate contemporary printmaking and its variety in process and technique. This group show promises a collection of work with a wide range of content."

Above: Helen Carter 'Undercurrents 1'

## 'CHINA THROUGH THE LENS OF JOHN THOMSON (1868 - 1872)'

**Until 2 June**

Russell-Cotes Art Gallery and Museum, Bournemouth, BH1 3AA. Tuesday - Sunday 10am - 5pm. £7.50. 01202 451858. "Stunning images of China in the 1860-70s taken by legendary photographer, John Thomson. From princes to foundlings, Manchu brides to street gamblers, his subjects are depicted with the utmost depth and aesthetic quality."

## RWA SCULPTURE OPEN EXHIBITION

**Until 2 June**

Royal West of England Academy, Queen's Road, Clifton, BRISTOL, BS8 1PX. Tuesday - Saturday 10am - 5.30pm, Sunday 11am - 5pm. rwa.org.uk. "This dynamic and varied exhibition showcases some of the most exciting sculptors from across the country and beyond. Almost all of the work is for sale, making the Sculpture Open a perfect opportunity to discover new artists or invest in well-known names."



## SIMON FAITHFULL: ELSEWHEN

The solo exhibition 'Elsewhen' brings together a series of works and interventions by internationally acclaimed artist Simon Faithfull that collectively act as a kind of orientation device for both the artist and the visitor to Hestercombe Gallery.

Many of Faithfull's works endeavour to subjectively map the planet that the artist finds himself on - attempting to understand his place in both time and space.

Faithfull often tries to bring back personal accounts of far-flung places and to create what he calls 'An Expanding Atlas of Subjectivity'. More importantly though, the artworks also try to connect the local, everyday scale of our normal lives to the wider, global scale of the planet. Faithfull's works for this exhibition have been selected in an attempt to place the viewer against a planetary scale of both space and time.

Our inability to deal easily with these huge scales however means that this 'orientation device' can in fact feel more 'disorientating' rather than reassuring. The artworks ask questions about where we find ourselves and perhaps undermine some of our comfortable delusions about the stability and certainty of our place within the wider universe - orientation as an aid to getting lost!

**Until 30 June:** Hestercombe Gallery, Hestercombe Gardens, Cheddon Road, CHEDDON FITZPAINE, near Taunton, TA2 8LG. 11am - 4pm. 01823 410131 / hestercombe.com.

## HENRI GAUDIER-BRZESKA:

### 'DISPUTING THE EARTH'

**Until 2 June**

Royal West of England Academy, Queen's Road, Clifton, BRISTOL, BS8 1PX. Tuesday - Saturday 10am - 5.30pm, Sunday 11am - 5pm. 0117 973

5129. "In his short life, Henri Gaudier-Brzeska (1891 - 1915) created an astonishing range of animal-inspired artworks. This exhibition pays new attention to his versatility as an animal artist and the special significance that the animal kingdom held for him."

## 'WOMEN ARTISTS'

**Until 9 June**

Royal Albert Memorial Museum, Queen Street, EXETER, EX4 3RX. Tuesday - Sunday 10am - 5pm. 01392 265858.

## JASON WILSHER-MILLS:

### 'TOLPUDDLE MARTYRS REMIXED'

**Until 14 June**

Shire Hall Historic Courthouse Museum, High West Street, DORCHESTER, DT1 1UY. 10am - 5pm. £8.50 / £4.50. 01305 261849 / shirehalldorset.org.

## 'TATTOO: BRITISH TATTOO ART REVEALED'

**Until 16 June**

M Shed, Princes Wharf, Wapping Road, BRISTOL, BS1 4RN. £6 / £5. 0117 352 6600 / bristolmuseums.org.uk. "This ground-breaking and comprehensive history of British tattooing celebrates the astonishingly rich artistic heritage of tattooing as an art form."

## 'OTHERWORLDLY'

**Until 29 June**

Atkinson Gallery, Millfield School, STREET, BA16 0YD. Monday - Saturday 9.30am - 5pm. 01458 444322. "A selection of 'otherworldly' sculptures are coming to Millfield School as a temporary outdoor exhibition as part of the Millfield Sculpture Trail."

## 'A LIFE IN COLOUR: THE ART OF DORIS HATT'

**Until 29 June**

The Museum of Somerset, TAUNTON, TA1 4AA. 01823 347418 / museumofsomerset.org.uk.



## 'INDIAN SUMMER'

**Until 14 July**

Russell Cotes Museum & Art Gallery, BOURNEMOUTH, BH1 3AA. Tuesday - Sunday and Bank Holiday Monday 10am - 5pm. russellcotes.com. "This fascinating exhibition of paintings and drawings by Felicity House (above) and Billa Edwards is the culmination of numerous en-plein air painting trips to the spectacular Indian sub-continent."



## CONTEMPORARY ART AND CRAFT

## Boilerhouse Gallery

Open Monday - Saturday 10am - 5pm

## PURBECK ART WEEKS FESTIVAL

VENUE 31

25th May - 9th June

Open daily 10am - 5pm

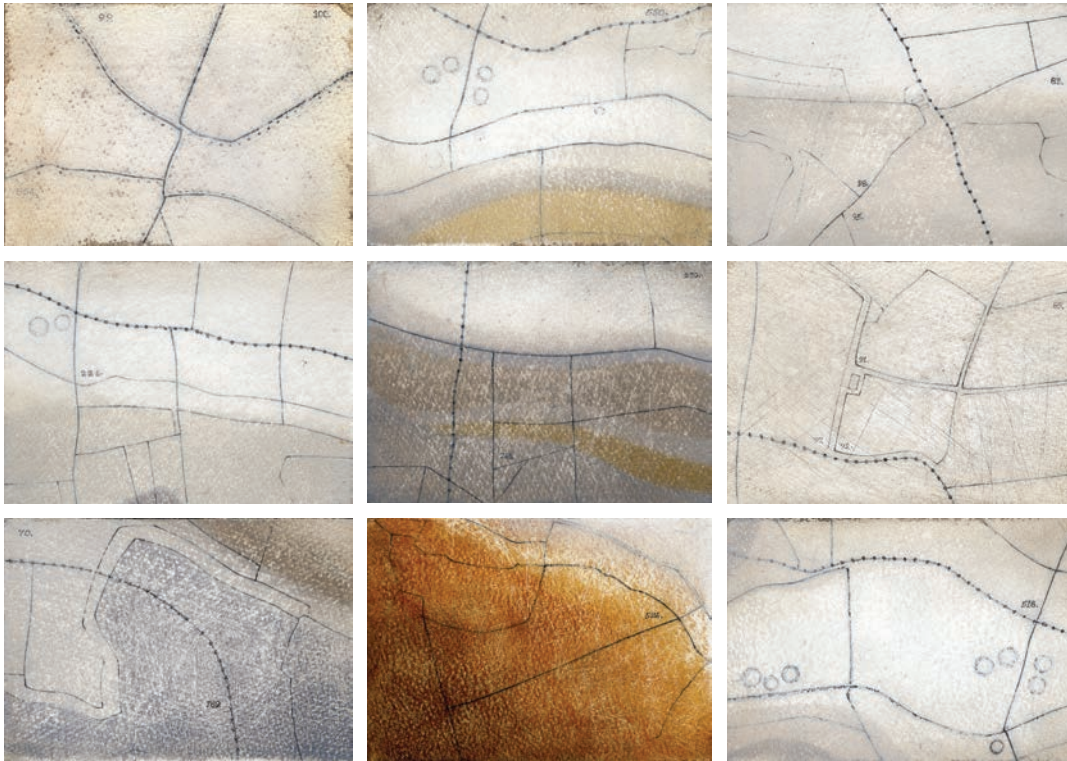
Pop-up café on site

Sandy Hill Lane, Corfe Castle, Dorset BH20 5JF

www.boilerhousegallery.co.uk



# VISUAL ARTS



## AMANDA WALLWORK: FIFTY FIELDS

"Open studio exhibition showing 50 small paintings of fields based on research for the South Dorset Ridgeway map series (available from Dorset AONB), plus other new work, including *Lost Fields of Portland*."

**25 and 26 May:** Top Floor Studio, The Old Timberyard, West Bay Road, WEST BAY, DT6 4EL. 11am - 5pm. 07816 224015 / amandawallwork.com.

### 'EELES POTTER'S LAST WOOD FIRING'

**Until 31 October**

North Undercroft, Forde Abbey and Gardens, CHARD, TA20 4LU. 10.30am - 4.30pm. £13 / £5 / free entry. 01308 868257. "New stoneware, porcelain and raku by the Eeles pottery."

### BRYAN DAWKINS

**1 - 5 May**

Kennaway House, Coburg Road, SIDMOUTH, EX10 8NG. 10am - 4pm. 01395 515551. "Sea, land and sky-scapes, marine and machine subjects."

### KARREN BURKETT: 'PLANTATION TO PALLADWR'

**1 - 14 May**

Shaftesbury Arts Centre, 11 - 13 Bell Street, SHAFTESBURY, SP7 8AR. 10am - 4pm. 01747 853822.



### SUZETTE KNIGHT: 'CERAMICS'

**1 - 31 May**

The Creative Gallery, St John's Hill, WAREHAM, BH20 4NB. Monday - Saturday 10am - 5pm. 01929 551700 / creativegallerywareham.co.uk. "Functional and sculptural vessels, thrown and hand built. Ceramics with an edge."

### 'IN BETWEEN SEA AND SHORE'

**2 - 18 May**

Drawing Projects UK, Bridge House, 10 Stallard Street, TROWBRIDGE, BA14 9AE. Thursday - Friday 12noon - 4pm, Saturday 10am - 4pm. 01225 767993. "Work by Poppy Briggs, Lyon Hansen, Alex Mah, Mariana Marcelino, Katie Sims, James Thornton and Deborah Westmancoat."

### 'LOUD & CLEAR'

**3 - 22 May**

Beaumont Gallery, Woodlands Road, MERE, BA12 6BT. 10am - 4pm. 07855 650964 / beaumontgallery.co.uk.

### CAM VALLEY ARTS

**4 May**

Conygre Hall, North Road, TIMSBURY, near Bath, BA2 0JQ. 11am - 5pm. camvalleyartstrail.co.uk.

### KATHY WYATT: 'MOMENTS IN TIME'

**4 and 5 May**

Hours, 10 Colston Yard, Colston Street, BRISTOL, BS1 5BD. 11am - 5pm. 07766 054659 / hours-space.com. "Liquid pigments with differing viscosities struggle for supremacy in the face of gravity, air flow and heat dispersion - the alchemy of substance finding its own route across the surface."

### 'CERAMICS IN THE CLOISTERS'

**4 - 18 May**

South Cloisters, Wells Cathedral, Cathedral Green, WELLS, BA5 2UE. 10am - 4.30pm. 01749 674483. "Over 300 pieces of wood fired stoneware, porcelain and raku by Eeles Family Pottery. Daily throwing demonstrations by Simon Eeles."

### RACHEL JEFFERY

**6 May - 1 June**

Axle Arts, Leighton Road, BATH, BA1 4NF. Monday - Friday 10am - 12noon. 01225 461230. "Abstract artist Rachel Jeffery's paintings are vibrant celebrations of colour and material."

### FIONA CAMPBELL: 'CELLS RESIDENCY'

**9 - 25 May**

Trowbridge Town Hall, Market Street, TROWBRIDGE, BA14 8EQ. Monday - Friday 10am - 4pm, Saturday 10am - 2pm. townhallarts.co.uk. "Fiona's work intersects sculpture, drawing and installation using recycled and found materials."

### THE SHAFTESBURY GROUP

**10 May**

Town Hall, 21 High Street, SHAFTESBURY, SP7 8LY. 10am - 4pm. 01747 853822. "Affordable contemporary fine art."

### 'DARK LUX'

**11 and 12 May**

The Garden Studio, 22 Forest View Road, Bournemouth, BH9 3BQ. 12noon - 8.30pm. 07904 846785. "The Sea Girls (Miriam Troth and Diane Roberts) will attempt to draw attention to the ongoing issues of migration."

### 'COLOURATION 2'

**11 - 19 May**

Eype Centre for the Arts, St Peter's Church, Mount Lane, EYPE, near Bridport, DT6 6AP. 10.30am - 4.30pm. 07918 182303. "A colourful extravaganza from the Dorset 5, showing their latest work. Sue Barnes, Chris Neaves, Chris Wilmshurst, Malcolm Giladjan and Zee Jones invite you to this feast in beautiful Eype."



THE  
WHITTOX  
GALLERY



We are proud to announce The HUBnub Gallery has been renamed **THE WHITTOX GALLERY**. We are a unique, contemporary art gallery located in the heights of **RISE** - a beautifully restored church in the heart of Frome.

WHITTOX LANE, FROME, BA11 3BY | 07712 523734  
www.risefrome.com | @thewhittoxgallery

Tuesday-Friday 9am-5pm  
Saturday & Sunday 10am-5pm

### CURRENT EXHIBITION



## PINE FERODA

A unique collaboration of four artist/printmakers together creating dramatic large woodcut prints.

30<sup>TH</sup> March to 9<sup>TH</sup> June 2019



THE WHITTOX GALLERY  
GALLERY | CAFE | EVENTS SPACE



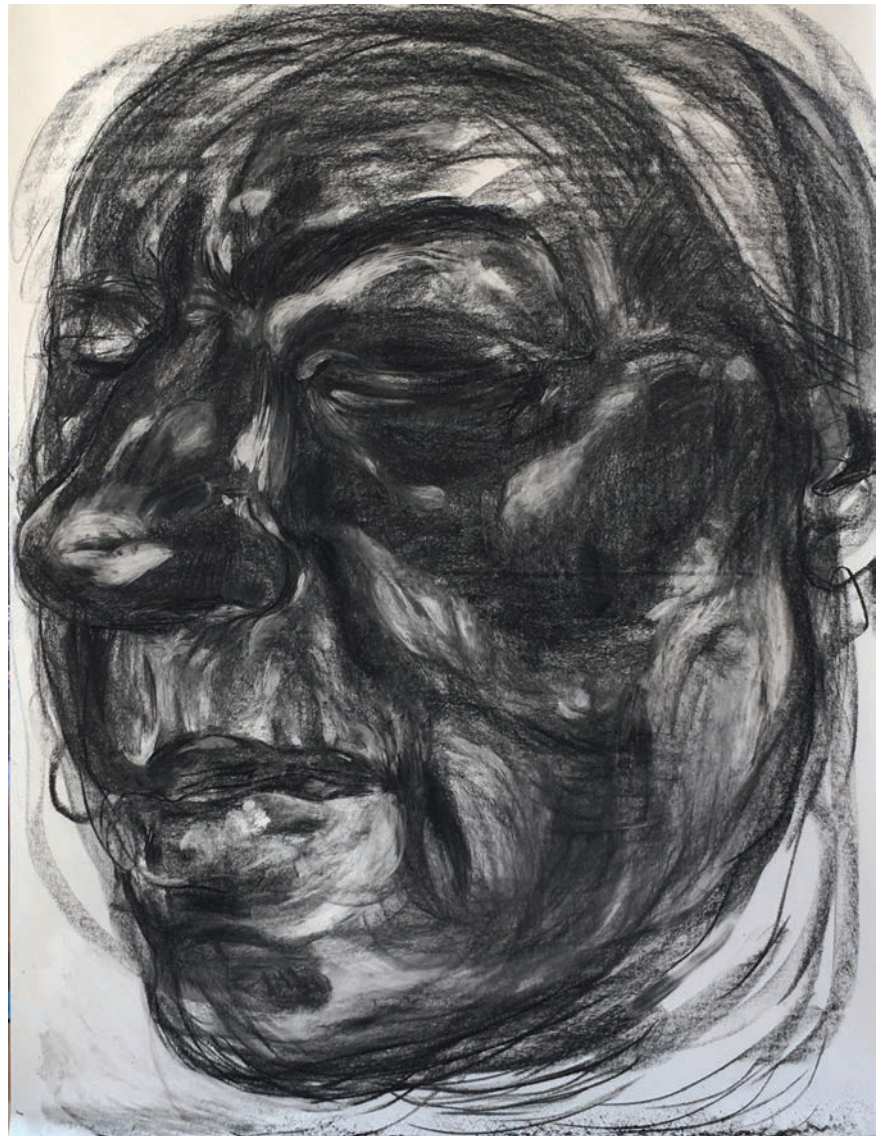
## ANITA TAYLOR

My first encounter with Anita Taylor's work was seeing a very large painting from her series *À mon seul désir* which is based on the enigmatic tapestry from the *La Dame à la Licorne* (*The Lady and the Unicorn*) series in the Cluny Museum in Paris. The mystery of these medieval tapestries has always eluded interpretation. Quoting the vibrant colour of the originals Taylor explores their narratives through the Cornish version of the Tristan legend Tristan and Iseut. She illuminates the relationship between the two female protagonists, gives the animals and plants humanistic qualities placing collars on them in order to show them as 'touched by human hand'.

Anita Taylor studied painting at the Royal College of Art, however she is best known for her promotion of drawing and the integral position it holds in her own practice. Alongside her roles as Dean of Bath School of Art and Design, founder of the Jerwood Drawing Prize, an educationalist and organiser of exhibitions, she squeezes in time to make new work in her studio. It is what keeps her sane, providing a breathing space, the context which allows her to make sense of the rest of the mad whirl of her life. There is an interconnectedness that runs through her work and life. A woven thread that moves in and out of the different strands of her practice, her professional life and her sense of being. It is impossible to unpick any one strand of what she does.

Taylor is widely known for her overwhelmingly powerful portrait studies of human female heads. Invariably but not always she uses her own reflected image as a reference. She used a model for *À mon seul désir*, but using herself as a model is often a matter of convenience. Many of her heads are larger than life even when drawn on small sheets of paper. From the vulnerability of the half figure view in *Divulge 2006* she has moved in on her face. Her heads fill the space crushing themselves against the edges of the support; no accoutrements, no context, hardly even a delineation of hair. The massive scale is hugely dominating.

However these are not strictly portraits, these heads are not personal they are universal. Much has been written about how the male gaze objectifies women and subsequently the case for a female gaze but which fails to objectify men in the same way. In navigating Taylor's concentration on her own reflected image these contexts are inescapable as she knowingly confronts the gaze. In her *Witness* series the eyes are closed. Leaving aside the mechanics of observing your face with your eyes closed, this focuses attention on the reflexive exploration of the human condition. It internalises the sense of observation asking what



'WITNESS 6'

constitutes being a witness. Shutting out the visual raises the question: what are we observing, how are we being observed and how and if this deflects the gaze. The conundrum for Taylor is that she can only ever see herself mediated through the glass, the reflective mirror. The eternal search in the arts, to see ourselves as others see us is an addictive and insoluble form of enquiry.

The dialogue surrounding the position of women in society, has been a driving force for Taylor expressed through her determined commitment to her own practice, her work in education and the fostering of opportunities for others. It has also led her to allude to women murderers from the Old Testament and to examine historical depictions of female sexuality, femininity and violence. Small works representing two figures interacting, trace the stories of Judith and Holofernes, famously painted by Artemisia Gentileschi, a significant painter in Taylor's set of influences. Another series takes Andrea Celesti's painting of Potifar's wife as a

source. There are echoes of Ana Maria Pacheco, Paula Rego and Frida Kahlo in the way that she approaches these subjects. The powerful realism in the Expressionism of Kathe Kollwitz' drawings has also had a profound influence on her work.

In the context of depicting the humanity of women any resemblance to Taylor herself is irrelevant. However these images are an expression of who she is, an exposition of a way to communicate, to create a dialogue around what it is to be human, to be female. Taylor's drawings can happen very quickly or take many years to be fully resolved, but whatever the timescale she finds using a material as elemental as charcoal working within the tonal ranges of black and white, just as complex as colour. Work in monochrome on paper comes close to baring the soul. In these drawings there is nowhere to hide.

Fiona Robinson

[drawingprojects.uk](http://drawingprojects.uk)





## POLLUTION PODS

From 29 June to 1 July 2019, b-side will host the first showing of *Pollution Pods* in Dorset, a unique interactive installation which will allow visitors to experience different levels of pollution and air quality from cities across the world.

Sited in the Stadium Bowl - a former quarry on the Isle of Portland, visitors are invited to pass through a series of climatically controlled pods and compare five contrasting global environments. Within each interconnected dome the air quality, ozone, nitrogen dioxide, sulphur dioxide and carbon monoxide levels of five cities is recreated. Starting with the host area of Portland, visitors will then experience increasingly polluted cells, starting with the truly clean air of Tautra in Norway, and then on a journey through the smog and pollution of Beijing, São Paulo and New Delhi.

The *Pollution Pods* were created by artist Michael Pinsky for the Norwegian University of Science and Technology, and commissioned to test whether art can really change people's perceptions of, and actions around, climate change. With one in five children in London now suffering from asthma, and over half their young counterparts in Delhi suffering with stunted lung development, visitors are invited to experience the direct, physical result of Western consumerism on the pollution levels in countries across the world.

**29 June - 1 July:** Portland Stadium Bowl, Incline Road, PORTLAND, DT5 1DL. 10am - 7pm (last entry 6pm). Free entry. 01305 568044 / b-side.org.uk.



### JANE ASKEY AND MARIAN HILL: 'STREET VIEW'

**11 May - 1 June**  
Hybrid Gallery, 51 High Street, HONITON, EX14 1PW. Tuesday - Saturday 10am - 5pm. 01404 43201.

"Exploring the buildings, shops and idiosyncracies that appear on the street, Hill creates detailed collages of old shop fronts and Askey enjoys taking an elevated view of coastal towns."

Left: Marian Hill 'The Tasty Plance'

### JON DORAN

**11 May - 1 June**  
Hybrid Gallery, 51 High Street, HONITON, EX14 1PW. Tuesday - Saturday 10am - 5pm. 01404 43201 / hybrid-devon.co.uk.

### ANGELA GOODMAN AND REBECCA GUYETT

**11 May - 4 June**  
Gallery On The Square, Poundbury, DORCHESTER, DT1 3BL. Monday - Saturday 9.30am - 5pm, Sunday 11am - 4pm. gallerypoundbury.co.uk.

### 'DRAWN IN'

**11 May - 15 June**  
Bridport Arts Centre, South Street, BRIDPORT, DT6 3NR. Tuesday - Saturday 10am - 4pm. 01308 424204 / bridport-arts.com. "The variety of approaches to drawing is abundantly evident in this exhibition of work by Penny Brice, Paul Carpenter, Caroline Chourou, Helen Dean, Jindra Jehu, Zara McQueen, Antonia Phillips, Jo Saurin, and Karen Wood."

### PERCY LIZZARD

**15 - 21 May**  
The Gallery, Shaftesbury Arts Centre, Bell Street, SHAFTESBURY, SP7 8AR. 10am - 4pm. percyizzard.art. "Recent paintings."

### 'MADE @ IAC'

**13 - 18 May**  
Ilminster Arts Centre, The Meeting House, East Street, ILMINSTER, TA19 0AN. Monday - Friday 9.30am - 4.30pm, Saturday 9.30am - 2.30pm. themeeetinghouse.org.uk.

### 'SPRING INTO SUMMER'

**17 - 30 May**  
The Hayloft Gallery, 14 Wick Lane, CHRISTCHURCH, BH23 1HX. 10am - 4pm. bubble-trouble.co.uk.

### 'SENSE OF PLACE'

**18 - 25 May**  
The Malthouse Gallery, East Lambrook Manor Gardens, EAST LAMBROOK, South Petherton, TA13 5HH. 10am - 5pm (Closed Monday). 01460 240328. "Oil paintings by Clive Melbourne and Sue Detain. Sue captures local scenes of life whilst Clive explores still life as a metaphor for life."



### BATH SOCIETY OF ARTISTS

**18 May - 29 June**  
Victoria Art Gallery, Pulteney Bridge, BATH, BA2 4AT. 10.30am - 5pm. £5 / £4.50. victoriagal.org.uk. "This popular exhibition showcases the best of the region's artistic talent and is a must for art lovers and collectors alike." Above: Tim Carroll 'Orangerie' (2018)



**b-side**

**ASSEMBLIES NO 4**

Air pollution, climate change and art in the face of crisis. Artists Michael Pinsky and Leni Dothan in conversation with Sara Hudson.

**FRIDAY, JUNE 28 2019 5 - 7PM**

**PORTLAND, DORSET**

**BOOK NOW: B-SIDE.ORG.UK**





# VISUAL ARTS



'42ND STREET, MANHATTAN'

## REFLECTIONS: A FRESH LOOK

"Returning from New York and Cuba, Moish Sokal reflects with a fresh look over the 25 years of exhibiting in the Malthouse Gallery and all the exotic locations visited during that time."

**4 June - 21 July:** Malthouse Gallery, East Lambrook Manor Gardens, Silver Street, EAST LAMBROOK, TA13 5HH. Tuesday - Sunday 10am - 5pm. £5.75 / £5.25. 07812 837825 / [www.moishsokal.co.uk](http://www.moishsokal.co.uk).

### 'MASTERS OF INVENTION'

**18 May - 7 July**

Devon Guild of Craftsmen, Riverside Mill, BOVEY TRACEY, Devon, TQ13 9AF. 10am - 5.30pm. 01626 832223 / [crafts.org.uk](http://crafts.org.uk). "Challenging perceptions of graffiti writing culture, whilst expanding traditional definitions of art, craft and design, this bold exhibition by leading UK and European artists explores the evolution of graffiti art."

### AUGUSTUS JOHN: 'DRAWN FROM LIFE'

**18 May - 29 September**

The Salisbury Museum, The King's House, 65 The Close, SALISBURY, SP1 2EN. Monday - Saturday 10am - 5pm, Sunday 12noon - 5pm. £8 / £4. 01722 332151 / [salisburymuseum.org.uk](http://salisburymuseum.org.uk). "This major retrospective of the work of artist Augustus John (1878 - 1961) focuses on John's early to mid-career, examining his reputation and looking in-depth at his achievements in drawing and etching."

### 'THE CREATIVE COLLECTIVE'

**20 May - 8 June**

Ilminster Arts Centre, The Meeting House, East Street, ILMINSTER, TA19 0AN. Monday - Friday 9.30am - 4.30pm, Saturday 9.30am - 2.30pm. [themeetinghouse.org.uk](http://themeetinghouse.org.uk). "Unique, high quality pieces - ceramics, silversmithing, textile screen prints, fused glass, embroidery, painting, botanical and wildlife art."

### 'SPECULATIVE SUPERMODELS'

**23 - 29 May**

Awesome Art Space, 27 Paris Street, EXETER, EX1 2JB. Thursday and Friday 11am - 2pm, Saturday and Sunday 11am - 5pm, Monday - Wednesday 11am - 2pm. [artworkexeter.org.uk](http://artworkexeter.org.uk).

"Exhibition of photo-collage, assemblage and interactive urban planning. Stuart Crewes presents recent work considering the built environment, situationist praxis and the mechanisms of decision making."

### 'FLOW: REFLECTIONS ON WATER'

**24 May - 9 June**

The Ice Space, North Parade Road, BATH, BA2 4UE. 11am - 6pm. 07775 557726. "Geoff Dunlop plunges visitors into the most amazing substance on earth. An immersive experience: wall-to-window-to-wall translucent prints, artist books, moving pictures."

### 'PAPER PLAY'

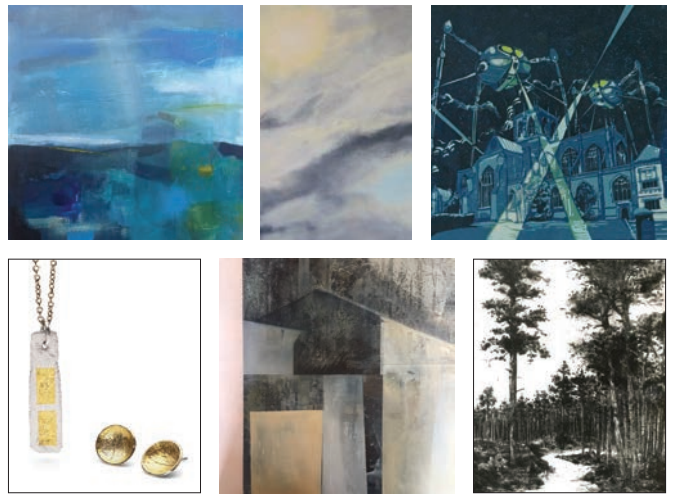
**25 May - 22 June**

Thelma Hulbert Gallery, Elmfield House, Dowell Street, HONITON, EX14 1LX. Tuesday - Saturday 10am - 5pm. [thelmahulbert.com](http://thelmahulbert.com). "Work created by artists and the community."

### NEW FOREST QUILT GROUP EXHIBITION

**26 - 28 May**

Ballard School, Fernhill Lane, NEW MILTON, Hampshire, BH25 5SU. Sunday and Monday 10am - 4pm, Tuesday 10am - 1pm. £2. [newforestquiltgroup.weebly.com](http://newforestquiltgroup.weebly.com).



## A Different Light

Paintings, Prints & Jewellery by Liz Bath, Anne-Louise Bellis, Jane Chapman, Mags Maxwell, Emma Munday & Noah Warnes

**1-9 June weekdays 10-4 weekends 10-6**

The Old Cow Shed Studio, Manor Farm, Glanvilles Wootton, DT9 5PZ  
07970 797 748 [albellis@btinternet.com](mailto:albellis@btinternet.com)

[www.theoldcowshedstudio.co.uk](http://www.theoldcowshedstudio.co.uk)



## CELEBRATING THE ARTS

**Saturday 22 June**

artist demonstrations • talks • café •  
mini tea dance • activities • art exhibits

**11.00 am - 4.00 pm**

Digby Hall, Sherborne, DT9 3AA

[www.sherborneartslink.org.uk](http://www.sherborneartslink.org.uk)

Charity no 1007680 Company no 2471382



## Elementum Gallery South St, Sherborne



Art, craft and writing from nature

Opening 11th May  
[elementumgallery.co.uk](http://elementumgallery.co.uk)

ILMINSTER  
**arts centre**  
AT THE MEETING HOUSE

★ ART ★ MUSIC ★  
CRAFTS ★ CAFE  
[www.themeetinghouse.org.uk](http://www.themeetinghouse.org.uk)

### A CALL FOR ENTRIES: ILMINSTER OPEN EXHIBITION 2019

EXHIBITION 1 - 26 JULY • Sponsored by Branston

Work in all mediums invited (except photography). Cash prizes.

Entry forms from Ilminster Arts Centre or website. Deadline 17 June.



## 'BODY OF WORK'

**26 May - 1 June**

Birdwood House Gallery, 44 High Street, TOTNES, Devon, TQ9 5SQ. 10.30am - 4pm. 01803 862025. "Su Scotting's vibrant acrylics explore the body, emotions and the brain, while Sam Harrison continues to acutely observe the often overlooked world around her in sensitive detailed watercolours."

## EAST DORSET POTTERS: 'POTS IN POOLE'

**27 May - 8 June**

The Eco Hub, Dolphin Centre, POOLE, BH15 1SZ. 10.30am - 4pm. 01202 949320. "An exciting mix of ceramics."

## KEVIN JONES: 'FREE STRUCTURE'

**27 May - 1 July**

Meeting Room, Wells & Mendip Museum, Cathedral Green, WELLS, BA5 2UE. Monday - Saturday 10am - 5pm. £3. 01749 673477. "Line, space and colour combine to create these very original, free structured artworks."

## POOLE LEISURE PAINTERS

**30 May - 10 June**

The Gallery Upstairs, Upton Country Park, Poole Road, POOLE, BH17 7BJ. 9.30am - 4.30pm. pooleleisurepainters.co.uk.

## ARTIST STUDIO JUMBLE SALE

**31 May**

Awesome Art Space, 27 Paris Street, EXETER, EX1 2JB. 11am - 5pm. artworkexeter.org.uk.

## 'GEOMETRY OF THE SMILE'

**1 - 9 June**

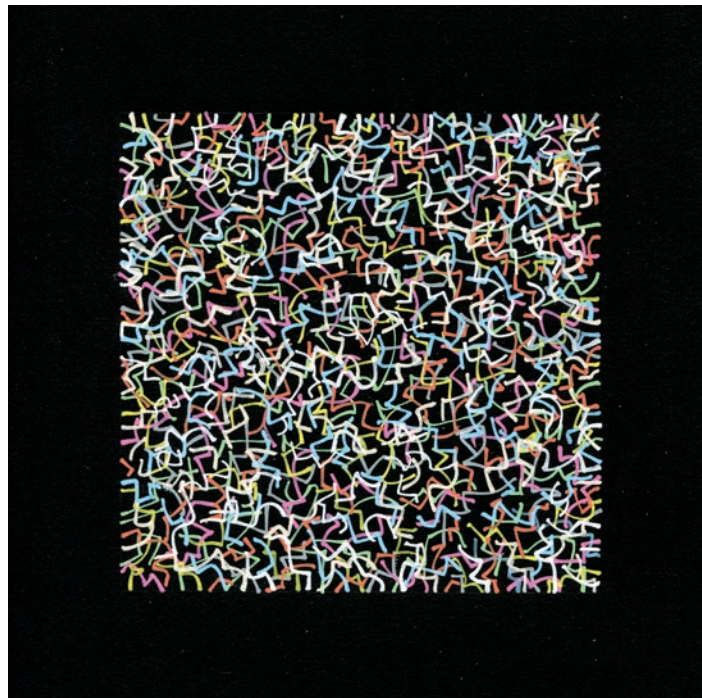
United Reformed Church, 30 Fisherton Street, SALISBURY, SP2 7RG. 11am - 4.30pm. storiesincolour.com. "Anna Shuttlewood and Dilianna Nikolova explore the 'geometry laws' of the smile in a paradoxical, amusing and cheerful way."



## TONY COWBURN: 'OUR JURASSIC COAST'

**1 - 30 June**

The Creative Gallery, St John's Hill, WAREHAM, BH20 4NB. 10am - 5pm. creativegallerywareham.co.uk. "The coast and landscapes of the Isle of Purbeck caught on camera. A celebration of the majesty of nature."



'BLACK SQUARES 365: 138'

## DAVID SMITH: BLACK IS NOT THE ONLY COLOUR

"In recent years, David Smith has successfully completed two every-day-for-a-year art projects and is now roughly half way through a third. This latest serial art project is #BlackSquares365, which involves him creating an 8 inch square artwork from scratch each day for a year. Smith is calling it 'distributed art': many people will own a piece, but each is part of a larger artwork, the project, which no one person can ever own, and nobody can ever see in its entirety. It is aimed at being a democratic antidote to 'big art' with each day's offering for sale at only £40, putting it within the budget of most people. Until now it has only been possible to see and buy work from the project on Smith's Twitter and Instagram feeds but for 3 days in June he is opening up his studio to present any unsold #BlackSquares365 pieces along with a range of recent drawings related to the Black Squares theme which has been a recurrent feature of his work for some time."

**14 - 16 June:** Studio 7B, Second Floor, Riverside Studios, Unit 10, St Michael's Trading Estate, BRIDPORT, DT6 3RR. Friday and Saturday 11am - 5pm, Sunday 11am - 4pm. 07778 981510 / davidsmithartist.net.

## 'THE ART OF CRAFT'

**3 - 8 June**

Priory Church, Quay Road, CHRISTCHURCH, BH23 1B. 10am - 4pm. 01202 428004 / cadarts.co.uk. "Arts and crafts."

## KATE VINER

**3 - 29 June**

Axle Arts, Leighton Road, BATH, BA1 4NF. Monday - Friday 10am - 12noon. axlearts.com. "Kate Viner is a figurative sculptor whose work celebrates female empowerment and expression."



## 'BAUHAUS'

**5 June - 20 July**

Kobi & Teal, 57 Catherine Street, FROME, BA11 1DA. Wednesday - Saturday 10am - 4.30pm. 07737 367419 / kobiandteal.co.uk. "In the 100th anniversary year of the Bauhaus school, Kobi & Teal presents a fantastic collection of art, design and craft, strongly inspired by this highly influential movement."

Above: Design K 'Geometric Collection'

## THE SHAFESBURY GROUP

**7 June**

Town Hall, 21 High Street, SHAFESBURY, SP7 8LY. 10am - 4pm. 01747 853822. See 10 May.

## JO BARBER AND PATRICK HALLISSEY: 'ENCOUNTERS'

**7 June - 20 July**

Trowbridge Town Hall, Market Street, TROWBRIDGE, BA14 8EQ. Monday - Friday 10am - 4pm, Saturday 10am - 2pm. 01225 774306. "Work by our two Open 2018 Prize Winners. Through 2D figurative works they acknowledge their encounters with artists who have inspired them."

## JENNY LIFE: 'STILL MOVING'

**8 and 9 June**

Hours, 10 Colston Yard, Colston Street, BRISTOL, BS1 5BD. 11am - 5pm. 07766 054659 / hours-space.com. "Charcoal, collage, paint and ceramics convey the dynamism of the human form, whilst paintings of Bristol reflect quiet stillness."

PULL-OUT SUPPLEMENT



BARBARA KARN  
'COURSE OF EVENTS'  
30 March - 4 May



KAY LEWIS-BELL  
'OH, THERE'S A FACE'  
11 May - 8 June



GROUP 7  
'COLOUR VALUES'  
15 June - 20 July



Market Place, Somerton, Somerset TA11 7LX • 01458 273008 • www.acearts.co.uk



# WESSEX FESTIVALS GUIDE 2019



DORSET MOON (28 JUNE - 14 JULY)

Photograph by Carolyn Eaton





## DORSET MOON

It has travelled all over the world and wowed thousands. Now Luke Jerram's internationally acclaimed *Museum of the Moon* is making its way to Dorset for the first time as part of *Dorset Moon*, the exciting new arts event for summer 2019. This stunning illuminated sculpture created using high-definition NASA imagery of the moon's surface will land in Bournemouth, Sherborne and Weymouth. Inside out Dorset, b-side and Bournemouth Arts By the Sea present Luke Jerram's *Museum of the Moon* as the centrepiece for three fantastic lunar-inspired events across Dorset. Dorset Moon is commissioned by the Arts Development Company with funding from European Regional Development Fund and Arts Council England.

**28 - 30 June:** Central Gardens, BOURNEMOUTH, BH2 6ED.

**5 - 7 July:** Sherborne Abbey, SHERBORNE, DT9 3LQ.

**12 - 14 July:** Nothe Fort, Barrack Road, WEYMOUTH, DT4 8UF.

[dorsetmoon.com](http://dorsetmoon.com)

### LYME REGIS FOSSIL FESTIVAL

**3 - 5 May**

Various venues in and around LYME REGIS, Dorset. [fossilfestival.com](http://fossilfestival.com) / 01297 445021. "Enjoy one of Dorset's largest science festivals. Find out all about the amazing Jurassic Coast with talks, walks and incredible interactive activities."

### SHERBORNE ABBEY FESTIVAL

**3 - 7 May**

Sherborne Abbey, SHERBORNE, Dorset. [sherborneabbeyfestival.org](http://sherborneabbeyfestival.org) / 01935 815341. "One of Dorset's most welcoming and accessible musical events. Line-up includes Alexander Armstrong."

### NORTH SOMERSET ARTS WEEK

**3 - 12 May**

Various locations throughout NORTH SOMERSET. [northsomerstartarts.org](http://northsomerstartarts.org). "North Somerset Arts Week features artists in their studios, homes and unique venues. You will see and buy artwork from ceramicists, metalworkers, painters, sculptors and more."

### SPIKE ISLAND OPEN STUDIOS

**4 - 6 May**

Spike Island, 133 Cumberland Road, BRISTOL, BS1 6UX. [spikeisland.org.uk](http://spikeisland.org.uk) / 0117 929 2266. "Explore the working environments of hundreds of artists, designers and creative businesses at Spike Island. Exhibitions, events, demonstrations, art work for sale, and street food by some of Bristol's best traders."

### LARKHALL OPEN STUDIOS

**4 - 6 May**

Various locations throughout LARKHALL, Bath. [larkhallopenstudios.co.uk](http://larkhallopenstudios.co.uk).

### BOURNEMOUTH EMERGING ARTS FRINGE FESTIVAL (BEAF)

**4 - 12 May**

Various locations in BOURNEMOUTH. [b-e-a-f.co.uk](http://b-e-a-f.co.uk). "BEAF reflects the stories, culture and communities that make up our unique location of urban setting and beautiful seafront. Discover events, exhibitions, art installations, film screenings, workshops and more across 9 festival days. Line-up includes Miroslav Lucan, Krishna Malla, Demeter Dykes, Bernadette Russell, Stuart Semple, Tim Edgar, Language, Timothy!, Rimski & Handkerchief, Simon Kilminster, Damian Le Bas, Scott Lavene, Jack Maguire, Budapest Cafe Orchestra, The Company of Fools."

### NEWBRIDGE ARTS TRAIL

**11 and 12 May**

20 venues in NEWBRIDGE, Bath, BA1. 11am - 6pm. Free entry. [newbridgeartstrail.com](http://newbridgeartstrail.com) / 07972 657573. "Over 40 artists open their doors to the public."

### WIMBORNE LITERARY FESTIVAL

**11 - 18 May**

Various venues in WIMBORNE, Dorset. [wimborneliteraryfestival.co.uk](http://wimborneliteraryfestival.co.uk).

### THE BATH FESTIVAL

**17 - 26 May**

Various locations in BATH. [bathfestivals.org.uk](http://bathfestivals.org.uk).

### FANFARE FOR SPRING

**18 May**

Town Centre, RINGWOOD. 10.30am - 4.30pm. [fanfareforspring.co.uk](http://fanfareforspring.co.uk) / 01425 489350. "The market town of Ringwood will be buzzing with hundreds of street performers from the UK and abroad. Around every street corner you will find musical and artistic surprises including choirs, bands, school dance, theatre, pavement artists, buskers, storey tellers, comedians and even Punch and Judy!"



# SUNSET RIDGE

## SUNDAY 14 JULY 2019

STEVIE & THE MASQUERADES • DESIGN • THE DIAMOND FAMILY ARCHIVE  
THE AMAZING CATTLE • AMBUSH • DIRTSTEW • RATTLESNAKE • UTTER CHAOS  
+ DJ ALAN FLINT

PRINCE OF WALES • HAM HILL • SOMERSET TA14 6RW • 1 - 8 PM • FREE ENTRY  
SUGGESTED DONATION £5 • ALL PROFITS TO DORSET AND SOMERSET AIR AMBULANCE



# WESSEX FESTIVALS 2019

## GERT LUSH VINTAGE BIKE FESTIVAL

19 May

Long Ashton Community Centre, BRISTOL, BS41 9DP. "Bristol's first annual vintage bicycle festival. 35 and 65 mile rides into Somerset, free fancy dress kids' ride, festival fete with free entry and a host of entertainments. Dress up and have fun."

## WIDCOMBE ART TRAIL

22 and 23 May

Various locations in WIDCOMBE, Bath, BA2 6AA. [widcombearttrail.com](http://widcombearttrail.com).

## SHINDIG WEEKENDER

23 - 26 May

Gilcombe Farm, BRUTON, Somerset, BA10 0QE. [shindig-events.co.uk](http://shindig-events.co.uk). "Kickstarting summer, Shindig offers a soulful dose of relaxation and revelry to funky warriors and their families. Line-up includes Estelle."

## CURSUS CIDER & MUSIC FESTIVAL

24 - 26 May

Canada Farm, CRANBORNE CHASE, Dorset. [cursusfestival.com](http://cursusfestival.com). "An intimate and friendly 500 capacity festival on the beautiful Cranborne Chase in Dorset. Small festival atmosphere with a big line-up. Families, dogs and live-in vehicles welcome. Line-up includes Ferocious Dog, Will Varley, The Eskies, The Dreadnoughts, Skimmity Hitchers, Black Water County, The Freeborn Brothers, Knockville, Imprints."

## SEA CHANGE FESTIVAL

24 - 26 May

TOTNES, Devon. [seachangefestival.co.uk](http://seachangefestival.co.uk). "A town festival of music, culture and high times. Line-up includes Metronomy."

## CHIPPENHAM FOLK FESTIVAL

24 - 27 May

Town Centre, CHIPPENHAM. [chippfolk.co.uk](http://chippfolk.co.uk) / 01249 657190. "All manner of traditional music, dancing, street entertainers and concerts in the River Island Park, by the lovely Avon, that will be simply buzzing with a massive range of things to do for all the family. There are up to 200 events. Whatever it is you are looking for you will find it here. Line-up includes The Melrose Quartet, The Wilson Family, Bob Fox, Jim Causely, Granny's Attic, Sara Grey & Keiron Means, The Committee Band, Out of Hand, Relentless, Cis Hinkle, Lyn Render, The Falconers, Taffy Thomas. Ursula Holden-Gill, Gary Bridgens & Ian Douglas."



RACHEL HARRINGTON

## BEER AND BLUEGRASS

"After a packed 'sell out' festival last year, Beer and Bluegrass returns to celebrate its 5th Birthday and this year includes no fewer than seven American and Irish top quality Bluegrass and Americana acts. Ideally situated between the towns of Poole and Bournemouth and only minutes away from the finest beaches in the UK with easy transport links including nearby Branksome Rail Station. Line-up includes See Hawks in LA, Rachel Harrington, Mountain Firework Company, Massey Ferguson, Local Honeys, Bog Standard Stringband, Resonant Rogues, JD Hobson, Gwenifer Raymond, Orange Circus, Death and The Dancer and Mishra."

**26 and 27 July:** Victoria School, 12 Lindsay Road, POOLE, BH13 6AS. [beerandbluegrass.co.uk](http://beerandbluegrass.co.uk).

## JAZZ JURASSICA

24 - 27 May

LYME REGIS, Dorset. [jazzjurassica.co.uk](http://jazzjurassica.co.uk) / 01297 442138. "Hot horns, blistering blues, gutsy gospel and sassy swing over a four day Spring Bank Holiday weekend of top-notch music in the sizzling seaside setting of Lyme Regis. Ticketed concerts at Marine Theatre and free music on the seafront and in venues around town. Line-up includes: Laurence Jones, Kick Ass Brass, Powerhouse Gospel Choir, Sound of Blue Note, Equinor Big Band."

## BATH FRINGE FESTIVAL

24 May - 9 June

Various venues in and around BATH. [bathfringe.co.uk](http://bathfringe.co.uk). "Bath's own home-grown festival of all the arts takes place in venues, in places that aren't venues, and in the streets and open spaces of our fair city."

## DOT TO DOT

25 May

Various venues, BRISTOL. [dottodotfestival.co.uk](http://dottodotfestival.co.uk).

## LOVE SAVES THE DAY

25 and 26 May

Eastville Park, BRISTOL, BS5 6XA. 11am - 11pm. [lovesavestheday.org](http://lovesavestheday.org).

## BEAR FLAT OPEN STUDIOS

25 - 27 May

Locations in and around Bear Flat, BATH. 11am - 5pm. [bearflatartists.co.uk](http://bearflatartists.co.uk).

## GLASTONBURY FRINGE

25 May - 2 June

Various locations in GLASTONBURY, Somerset. [glastonbury-fringe.org.uk](http://glastonbury-fringe.org.uk). "Nine days of exhibitions, competitions, fine food and drink, theatre, workshops and healing and more high quality music than anywhere else on a daily basis held at pubs, cafés and other venues throughout town. Line-up includes Tankus the Henge, Port Erin, Noel & Webb, Break Beat Bandits."

## WESSEX FOLK FESTIVAL

31 May - 2 June

Weymouth Harbour, WEYMOUTH, Dorset, DT4 8TJ. Free entry. [wessexfolkfestival.com](http://wessexfolkfestival.com). "Weymouth's picturesque historic harbour hosts continuous music on two outdoor stages, dancing from up to 30 Morris Dance sides, workshops and pub sessions."

## CRED FEST

3 - 23 June

Town Centre, CREDITON, Devon. [credfest.co.uk](http://credfest.co.uk).

[www.beerandbluegrass.co.uk](http://www.beerandbluegrass.co.uk)





**PURBECK ART WEEKS**  
**Festival**  
25 May – 9 June

Open studios  
Concerts  
Talks  
Grand Raffle  
Competitions

2019

Two weeks  
of art and  
discovery...




For more information and event ticket sales visit  
[www.purbeckartweeks.co.uk](http://www.purbeckartweeks.co.uk)

#purbeckartweeks

## WESSEX FESTIVALS 2019



ENGLISH CORNETT AND SACKBUT ENSEMBLE

## PURBECK ART WEEKS

"PAW Festival is offering yet another superb programme of concerts and talks plus artists' open studios and exhibitions across Purbeck. Be inspired by art during the day and in the evenings relax and enjoy a talk or concert or two (with a glass of wine). This year's theme *Flights of Fancy* (loosely inspired by the 500th anniversary of the death of Leonardo da Vinci) can be interpreted in so many different ways, as you will see. PAWs' artists are looking forward to welcoming you into their open studios where you'll find a rich array of paintings, photography, ceramics, sculpture, glass work and mosaics, digital art, textile art and much more. Festival highlights include a celebration of 20th century *English Coronations* with Gabrieli plus brass and timpani, while I Fagiolini return with a performance celebrating Leonardo da Vinci in art and music. PAW's collective exhibition in historical Rollington Barn shows work from the over 100 artists taking part in this year's Festival. Also on show is the imaginative work of around 500 young people (Purbeck Young Artists) from schools across Purbeck."

**25 May - 9 June:** Various locations, ISLE OF PURBECK, Dorset.  
[www.purbeckartweeks.co.uk](http://www.purbeckartweeks.co.uk).

### The Gallery at 41

proud to support Purbeck Art Weeks

Venue 28



David Atkins

### Purbeck Art Weeks Festival Exhibition

every day except Tues, May 25 to June 9, 10 to 5

See website for opening hours for rest of the year

41 East Street, Corfe Castle, BH20 5EE T: 01929 480095

[www.galleryat41.com](http://www.galleryat41.com)    [contact@galleryat41.com](mailto:contact@galleryat41.com)



**Heather Gibbons**  
**'Drawn to the Edge'**  
25 May - 9 June  
FINE FOUNDATION GALLERY  
Durlston Castle, Lighthouse Road,  
Swanage, BH19 2JL  
[www.heathergibbons.co.uk](http://www.heathergibbons.co.uk)






### EXHIBIT A

Artists and photographers are invited to submit work for consideration as next issue's page 3 **EXHIBIT A** by emailing images to: [simon@evolver.org.uk](mailto:simon@evolver.org.uk)



# WESSEX FESTIVALS 2019

## WIMBORNE MINSTER FOLK FESTIVAL

6 - 9 June

Various locations in WIMBORNE MINSTER, Dorset. [wimbournefolk.co.uk](http://wimbournefolk.co.uk). "Morris dancers, music, and more!"

## LOVE ROCKS

7 and 8 June

St Leonards Farm, Ringwood Road, Ferndown, BOURNEMOUTH, BH22 0AQ. [sanctuarypromotions.co.uk](http://sanctuarypromotions.co.uk).

## CONTEMPORARY CRAFT FESTIVAL

7 - 9 June

Mill Marsh Park, BOVEY TRACEY, Devon, TQ13 9AL. [craftsatboveytracey.co.uk](http://craftsatboveytracey.co.uk).

## SIDMOUTH LITERARY FESTIVAL

7 - 9 June

Various locations, SIDMOUTH, East Devon. [sidmouthlitfest.co.uk](http://sidmouthlitfest.co.uk).

## HOME FARM FEST

7 - 9 June

Home Farm, CHILTHORNE DOMER, near Yeovil, Somerset, BA22 8RD. [homefarmfest.co.uk](http://homefarmfest.co.uk).

## BS9 ARTS TRAIL

8 and 9 June

Various locations in WESTBURY-ON-TRYM, HENLEAZE and STOKE BISHOP, Bristol, BS9. 11am - 5pm. [bs9arts.co.uk](http://bs9arts.co.uk) / 07791 488671. "80 artists will be exhibiting in their studios and group venues throughout the BS9 area. Affordable paintings, prints, turned wood, sculpture, jewellery, mosaics, ceramics and more!"

## GREEN SCYTHE FAIR

9 June

Thorney Lakes, MUCHELNEY, near Langport, Somerset, TA10 0DW. 11am - 11pm. [greenfair.org.uk](http://greenfair.org.uk). "A magical one day environmental fair in a beautiful setting on the Somerset Levels, run entirely by volunteers using wind, sun and muscle power. Traditional rural crafts, scythe competition, lively environmental debates, delicious organic local food, a variety of the best ales and ciders, and a large kids area with activities throughout the day."

## BRIDPORT FOOD FESTIVAL

9 - 15 June

Various venues in and around BRIDPORT. [bridportfoodfestival.co.uk](http://bridportfoodfestival.co.uk). "A week of delicious foodie events in and around the town culminating with Bridport Round Table's Beer Festival at Asker Meadows (Bridport DT6 4AP) on Saturday 15 June. Join the carnival atmosphere for a whole host of food and fun for all ages."



SACCONI QUARTET

## SALISBURY FESTIVAL

"Salisbury International Arts Festival 2019 which will mark two global anniversaries - the 1969 moon landings and the 1989 fall of the Berlin Wall - with an ambitious mix of music, spoken word, film, dance, circus, theatre, comedy and family events, featuring more than 120 events across 16 days. Guest Festival Director Jonathan Dove is one of our leading contemporary composers and several of his works will be performed during the Festival, including two new commissions: Moon Songs and Vertue. Central to the Festival will be a dramatic installation inside Salisbury Cathedral of Luke Jerram's Gaia, a huge, seven-metre wide sculpture featuring detailed NASA imagery of the earth's surface."

**24 May - 9 June:** Various locations in and around SALISBURY, Wiltshire. [wiltshirecreative.co.uk](http://wiltshirecreative.co.uk).

## ALTITUDE FESTIVAL

14 and 15 June

BLACKBOROUGH, Devon, EX15 2HJ. [altitudedevon.com](http://altitudedevon.com). "Altitude is a family focussed festival, nestled in the beautiful Blackdown hills. 3 stages of eclectic music, kids entertainment, workshops, street theatre, a wide variety of food and great local ales and beers. Camping and camper van pitches available on site. Line-up includes Bluetones, Land of the Giants, The Allergies, Grace Savage, Honeyfeet, Noble Jacks, The Age Of Glass, Pattern Pusher, Opal Ocean, Hobo Jones and the Junkyard Dogs, Stellar Fox, Dead Ground, Drop in the Ocean, Milo Gore, Sinful Maggie."

## PETHERTON FOLK FEST

15 June

Various locations in SOUTH PETHERTON, Somerset. 10am - 6pm. [pethertonfolkfest.org.uk](http://pethertonfolkfest.org.uk). "A full day of entertainment for the whole family. Singers, dancers, and bands here to entertain you for free!"

## SOMERFEST

15 June

Town Centre, TAUNTON, TA1 4AA. 11am - 6pm. [somerfest.net](http://somerfest.net).

## RIVER TOWN

20 June - 28 July

Colston Hall and St George's, BRISTOL. [colstonhall.org](http://colstonhall.org). "Superb Americana music."

## SOMERSET GIN FESTIVAL

21 June

Westlands Entertainment Venue, Westbourne Close, YEOVIL, BA20 2DD. 7pm. [westlandseyovil.co.uk](http://westlandseyovil.co.uk) / 01935 422884. "Discover an amazing selection of gins and enjoy live music, a great atmosphere, delicious food and lots of chit chat with other gin lovers!"

## DORSET MIDSUMMER MUSIC FESTIVAL

21 and 22 June

Warren Farm, BULBARROW, Blandford Forum, Dorset, DT11 0HQ. [midsommermusic.co.uk](http://midsommermusic.co.uk). "A family friendly music festival set in an area of outstanding natural beauty."

## TEIGNMOUTH FOLK FESTIVAL

21 - 23 June

TEIGNMOUTH, South Devon. [teignmouthfolk.co.uk](http://teignmouthfolk.co.uk). "Line up includes Jim Payne, Paul Wilson & Marilyn Tucker, Geoff Lakeman, Jim Causley, Bill Murray, Peter & Barbara Snape, The Old Gaffers Shanty Crew, City of Plymouth Pipe Band, Mrs Midnight's Ceilidh Band."

**North Somerset**

**Arts Week**

3rd - 12th May 2019  
[northsomersetarts.org](http://northsomersetarts.org)

Facebook: @NorthSomersetArts  
Twitter: @NSomersetArts  
#followtheflag #NSAW19

**EVOLVER PRIZE 2019**

**FIRST PRIZE**

**£1,000**

**+ EVOLVER 112 FRONT COVER**

See page 35

THG Thelma Hulbert Gallery mount **EVOLVER**

**BEAF 2019**

BOURNEMOUTH EMERGING ARTS FRINGE FESTIVAL

SAT 4TH - SUN 12TH MAY

ARTS COUNCIL ENGLAND



# WESSEX FESTIVALS 2019

## HALL AND WOODHOUSE BEER FESTIVAL

**22 June**

The Hall & Woodhouse Brewery  
BLANDFORD ST. MARY, Blandford  
Forum, Dorset, DT11 9LS. 11am -  
10pm (last entry 8pm).  
hallwoodhousebeerfest.com. "Real  
ales, ciders and perries, live music and  
hot food."

## CHESIL ROCKS

**22 June**

Higher Farmhouse, LANGTON  
HERRING, Dorset, DT3 4JD. 11am -  
12midnight. chesilrocks.com. "A small  
and intimate music and arts festival, in  
a beautiful setting."

## CHALKE VALLEY HISTORY FESTIVAL

**24 - 30 June**

Church Farm, Bury Lane, BROAD  
CHALKE, near Salisbury, Wiltshire SP5  
5DP. cvhf.org.uk / 01722 781133. "The  
world's largest festival entirely devoted  
to history. It is a unique combination of  
talks, discussions and topical debates,  
plus a vast living history encampment,  
where the very best living historians -  
all experts in their field - bring history  
to life with their extensive knowledge  
and passion for their subjects."

## GOREN FESTIVAL

**28 - 30 June**

Goren Farm, STOCKLAND, Honiton,  
Devon, EX14 9EN. "Family-friendly,  
music festival with buckets of integrity!  
Go wild in the wildflower meadows!"

## WEST SOMERSET FOLK FESTIVAL

**28 - 30 June**

Recreation Hall, CARHAMPTON, near  
Minehead, Somerset.  
westsomersefolkfestival.co.uk.

## FOLK ON THE QUAY

**29 June**

The Quay, POOLE.  
folkonthequay.co.uk. "Free folk music  
festival with outdoor music stages, two  
ceilidh dances and over twenty teams  
of morris dancers. Line-up includes 3  
Daft Monkeys, Gren Bartley, Roswell."

## PORTISHEAD AROUND THE HOUSES ART TRAIL

**29 and 30 June**

PORTISHEAD, Bristol. 10am - 5pm.  
portisheadaroundthehousesarttrail.  
wordpress.com. "Following the  
amazing success of last year's inaugural  
PATH, over thirty local artists will once  
again be opening their doors to  
showcase their artistic talents.  
Paintings, photography, ceramics,  
textiles, modern industrial furniture and  
more."



AYOUB SISTERS

## FARLEY MUSIC FESTIVAL

"A world-class line-up of classical music performers is set to break all previous attendance records at the eagerly awaited 18th annual Farley Music Festival, due to take place at the iconic Wren-style All Saints' Church in the picturesque Wiltshire village of Farley, seven miles east of Salisbury. The annual festival has grown a loyal following by showcasing talented international young musicians, performing classical music of the highest quality in a charming and intimate setting. Following on from last year's record attendance-breaking event, the 2019 Farley Music Festival will include the return, by popular demand, of four outstanding musicians who wowed past Farley audiences. Line-up includes Riyad Nicolas, Viktor Bijelović, and the Ayoub Sisters."

**18 - 23 June:** All Saints' Church, FARLEY, Wiltshire, SP5 1AH. Each concert £15. 01980 862222 / 01722 320333 / wiltshirecreative.co.uk / farleymusic.co.uk.

## EXETER CRAFT FESTIVAL

**4 - 6 July**

Exeter Cathedral, EXETER.  
exetercraftfestival.co.uk. "A 3-day  
celebration of the very best artists and  
makers based in the South West."

## UK INTERNATIONAL BOOGIE WOOGIE FESTIVAL

**5 - 7 July**

Venues throughout STURMINSTER  
NEWTON, Dorset.  
ukboogiewoogiefestival.co.uk. "A must  
for any boogie woogie enthusiasts and  
just plain fun for anyone who likes live  
music."

## SHAFTESBURY FRINGE

**5 - 7 July**

Various locations in SHAFTESBURY,  
Dorset. shaftesburyfringe.co.uk.  
"Comedy, theatre, music and spoken  
word."

## CHRISTCHURCH MUSIC FESTIVAL

**5 - 7 July**

Various locations in CHRISTCHURCH,  
Dorset. christchurchfestival.co.uk. "Two  
stages, bar, food stalls, craft stalls,  
clothing stalls, children's activities and  
much more!"

## FROME FESTIVAL

**5 - 14 July**

Various venues throughout FROME,  
Somerset. fromefestival.co.uk / 01373  
453889. "Frome's impressive and  
entertaining arts festival features an  
eclectic mix of opera, pop, choral, jazz  
and folk music, theatre, workshops,  
exhibitions, films, walks and talks."

## PARTY BY THE PARRETT

**6 July**

The Rec, KINGSBURY EPISCOPI,  
Somerset, TA12 6AX. 1 - 11.30pm.  
partybytheparrett.co.uk.

## ABBOTSBURY SUMMER FAMILY FESTIVAL

**6 July**

Subtropical Gardens, ABBOTSBURY,  
Dorset. 1.30pm. abbotsbury-  
tourism.co.uk. 01305 871130. "Line-up  
includes Show of Hands, Tom  
Robinson, Track Dogs, Banter, Kelly  
Oliver."

## MARLBOROUGH OPEN STUDIOS

**6 - 28 July**

Locations in and around  
MARLBOROUGH, Wiltshire.  
marlboroughopenstudios.co.uk. "An  
opportunity for the public to meet  
professional artists in the beautiful  
north Wessex Chalk Downs and visit  
their studios, workshops or galleries  
over four weekends in July."

## SOMERSET ART WEEKS FESTIVAL 2019 21 SEPTEMBER - 6 OCTOBER

somersetartworks.org.uk





# WESSEX FESTIVALS 2019

## PRIDDY FOLK FESTIVAL

12 - 14 July

Priddy Green, PRIDDY, Somerset, BA5 3BB. [priddyfolk.org](http://priddyfolk.org).

## ONCE UPON A TIME IN THE WEST

12 - 14 July

Deepest WILTSHIRE (near Trowbridge and Westbury). [outwestfestival.co.uk](http://outwestfestival.co.uk). "Good value, small scale, big fun."

## WONDER FIELDS

12 - 15 July

Great Fulford, DUNSFORD, Exeter, Devon, EX6 7AJ. [wonderfields.co.uk](http://wonderfields.co.uk).

## BUDLEIGH MUSIC FESTIVAL

12 - 20 July

BUDLEIGH SALTERTON, Devon. [budleighmusicfestival.co.uk](http://budleighmusicfestival.co.uk). "Classical music on the Jurassic coast."

## SOMERSTOCK

13 July

Recreation Ground, SOMERTON, Somerset. [somerstock.com](http://somerstock.com). "Line-up includes Toploader, The Decatonics, Black Friday, Ben Waters."

## SUNSET RIDGE

14 July

Prince of Wales, HAM HILL, near Yeovil, Somerset, TA14 6RW. 1 - 8pm. Free entry. "The Electric Broom Cupboard's annual festival of original music. Line-up includes The Amazing Cattle, Design, Ambush, Dirtstew."

## LARMER TREE FESTIVAL

18 - 21 July

Larmer Tree Gardens, TOLLARD ROYAL, Dorset, SP5 5PY. [larmertreefestival.co.uk](http://larmertreefestival.co.uk). "Five-day music and arts festival. Line-up includes Kate Tempest, The Cat Empire, The Shires, Jack Savoretti, KT Tunstall, Gomez, Let's Eat Grandma, Gogo Penguin, Tank and The Bangas, Ezra Collective, London Astrobeat Orchestra, The Wave Pictures, Grace Petrie, Josie Long, Nish Kumar."

## CHAGSTOCK FESTIVAL

19 and 20 July

Whiddon Down, near CHAGFORD, Devon. [chagstock.info](http://chagstock.info).

## BRISTOL HARBOUR FESTIVAL

19 - 21 July

Harbourside, BRISTOL. Free entry. [bristolharbourfestival.co.uk](http://bristolharbourfestival.co.uk).

## TROWBRIDGE FESTIVAL

19 - 21 July

Stowford Manor Farm, WINGFIELD, near Trowbridge, BA14 9LH. [trowbridgefestival.co.uk](http://trowbridgefestival.co.uk). "Line-up includes Emily Barker, Coco and The Butterfields, Gigspanner, Gaz Brookfield."



SALLY MCLAREN 'LIGHT' (Oil painting, 76 x 76 cm)

## WYLYE VALLEY ART TRAIL

"Since its founding in 2001, the biennial Wylde Valley Art Trail has established itself as the largest visual arts event in Wiltshire. This is the 10th trail, the largest and most exciting yet, with 87 venues, scattered across southwest Wiltshire, set in some of the most beautiful countryside this county has to offer, covering Warminster, Westbury, Wylde, Maiden Bradley, Mere, Hindon, Tisbury and villages in between. The Wylde Valley Art Trail is a wide and eclectic patchwork of art and craft by over 390 exhibitors, ranging from award-winning artists with international reputations, to those just starting out on their creative journeys. Visit open studios and workplaces, galleries, exhibitions by art groups, student groups and other fascinating events including 'hands on' activities, demonstrations, workshops and talks. A unique opportunity to see the high standard of visual arts and crafts currently being carried out in this area, across a wide range of skills, from painting to print-making, furniture making to photography and sculpture to ceramics as well as contemporary art forms such as digital art, installation, video and art using recycled materials."

18 - 27 May: WYLYE VALLEY, Wiltshire. [wvat.co.uk](http://wvat.co.uk).

PICMF

Purbeck  
International  
Chamber  
Music  
Festival

Every year we invite acclaimed musicians and actors around the world to join us for the Purbeck International Chamber Music Festival

For programme information and booking tickets

[www.purbeck-chambermusic.org.uk](http://www.purbeck-chambermusic.org.uk) or call 0333 666 3366

29.08-01.09.19

Natalie Clein cello & musical director



# SALISBURY INTERNATIONAL ARTS FESTIVAL

24 MAY - 9 JUNE

OVER 120 EVENTS ACROSS 17 DAYS!



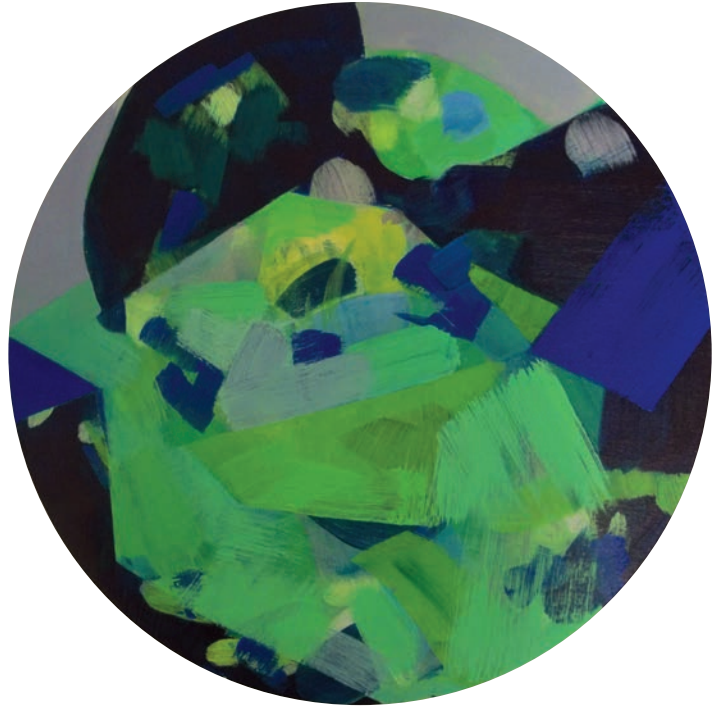
MAJOR SPONSOR

**Wilsons**  
Solicitors

NATIONAL  
MEDIA  
PARTNER

**scala**  
RADIO

## WESSEX FESTIVALS 2019



JULIA MORGAN

### OPEN FOR ART

"An open studios event with over 70 venues and more than 200 artists to visit in large group venues in historic buildings, galleries, cafes, shops and artist's own studios. A chance to see artists and their work ranging from painting, printing, sculpture, pottery to textile art, jewellery and glass making, the visitor can purchase, commission or just enjoy the view. Brochures are available from tourist offices, libraries, galleries, local cafes, hotels and shops or can be viewed online."

**18 May - 2 June:** Various locations throughout SOUTH DORSET.  
[openforart.co.uk](http://openforart.co.uk)



JANE ROBINSON

### FROME OPEN STUDIOS

"Artists and makers open their studio and workshop doors for this much loved event during Frome Festival. It is a perfect opportunity to meet the artists in a relaxed setting and buy directly from them. This event supports the work of local artisans who add to the independent and vibrant community in Frome. There is a wealth of talent in this lovely market town and something on the art trail to suit all tastes and budgets. Taking part this year we have painters, printers, ceramicists, jewellers, sculptors, fashion and textile designers, illustrators, photographers, glass artists and wood workers."

**6 - 14 July:** Various venues in FROME, Somerset.  
[fromeopenstudios.co.uk](http://fromeopenstudios.co.uk)

**Farley**  
Music Festival

18-23 June  
[farleymusic.co.uk](http://farleymusic.co.uk)

Generously supported by:



All Saints' Church  
Farley SP5 1AH

Tickets £15 from  
Salisbury Playhouse



# WESSEX FESTIVALS 2019

## TOLPUDDLE MARTYRS' FESTIVAL

19 - 21 July

TOLPUDDLE, Dorset.

[tolpuddlemartyrs.org.uk](http://tolpuddlemartyrs.org.uk). "Annual festival to commemorate the bravery of the martyrs' struggle, featuring music, speakers and family entertainment."

## THE GODNEY GATHERING

20 July

Garslade Farm, GODNEY, Glastonbury, BA5 1RX. [thegodneygathering.com](http://thegodneygathering.com).

## BRIDGWATER QUAYSIDE FESTIVAL

20 July

Various locations in BRIDGWATER.

11am - 5pm.

[bridgwaterquaysidefestival.co.uk](http://bridgwaterquaysidefestival.co.uk).

"Bridgwater's free outdoor summer festival has a fantastic line up of live music, jazz, swing, acoustic, dance, international street theatre, circus and aerialists, family and children activities, fabulous food stalls, arts, crafts, all in the centre of the town."

## CAMP FESTIVAL

25 - 28 July

Lulworth Castle, LULWORTH, Dorset. [campfestival.net](http://campfestival.net) / 0844 888 0444.

"Camp Festival, the UK's most loved family festival, returns in 2019 with a Heroes vs Superheroes theme, fantastic family fun and an out-of-this-world line-up. Line-up includes Nile Rodgers & Chic, The Human League, Annie Mac, Jess Glynne, The Wailers."

## WOMAD

25 - 28 July

Charlton Park, near MALMESBURY, Wiltshire. [womad.co.uk](http://womad.co.uk). "WOMAD, the global party now celebrating its 37th year, is a glorious melting pot of music, dance, food, art, spoken-word, poetry, science, well-being and more, embracing the joys of diversity and tolerance at a time when the world needs it more than ever. Line-up includes Ziggy Marley, Orbital, Anna Calvi, Salif Keita, Cymande, Tshague, Brushy One String, Delgres, Les Filles de Illighadad, Nadine Shah."

## FARMFEST

25 - 27 July

Gilcombe Farm, BRUTON, Somerset, BA10 0QE. [farmfestival.co.uk](http://farmfestival.co.uk). "The mischievous melting pot of music, arts, party and people returns to Gilcombe Farm with its best line-up ever, plus arts, workshops, yoga, kids entertainment and lots of Wild Beer! Line-up includes Morcheeba, James Holden & Animal Spirits, Portico Quartet, Craig Charles, Horse Meat Disco, Little Boots Discoteque."



LAUREN ZHANG

## BEAMINSTER FESTIVAL

"The Beaminster Festival is action-packed, featuring two BBC Young Musicians, Lauren Zhang (piano), and Emma Johnson (clarinet). We are thrilled to have the amazing Eric Lu (piano), and renowned tenor Mark Padmore. *Così fan Tutte* is given a contemporary twist by Rose Opera, and the 12 ensemble, a brilliant string orchestra, give an exhilarating finale. Daisy Goodwin introduces AN Wilson and Victoria Hislop, with Minette Walters and Dr Sam Willis completing the historical flavour of the literary events. Shakespeare's *As You Like It* is presented in the glorious grounds of Beaminster Manor, which is also the setting for a family BBQ and picnic at the end of the week. Local band Scoot kick off the week at Party in the Park, and the Ben Waters Band play one of their last public gigs. Demonstrating the wealth of local talent, the visual arts exhibition is open throughout the week."

**22 - 30 June:** Various venues in BEAMINSTER. [beaminsterfestival.com](http://beaminsterfestival.com) / 01308 862943.

## BRIDPORT FOLK FESTIVAL

26 - 28 July

Town Centre, BRIDPORT, Dorset. [bridportfolkfestival.com](http://bridportfolkfestival.com).

## OUTCIDER FESTIVAL

2 - 4 August

Fernhill Farm, COMPTON MARTIN, Somerset. [outciderfestival.com](http://outciderfestival.com). "A real West Country experience of cider and live music at this 500 capacity festival on a working farm just south of Bristol. Line-up includes Alabama 3, Beans On Toast, Bar Stool Preachers, Back To The Planet, Skimmity Hitchers, Captain Accident & The Disasters, Irie Fire."

## BURTON BRADSTOCK FESTIVAL OF MUSIC AND ART

10 - 18 August

Village Hall and Church, BURTON BRADSTOCK, Dorset, DT6 4QS. [burtonbradstockfestival.com](http://burtonbradstockfestival.com) / 01308 897203. "Now in its 38th year, the Festival is a week long experience of art and music. World renowned musicians play classical pieces, jazz and world music in 12 wonderful concerts. Line-up includes Kabantu, Christian Garrick, David Juritz, Milos Milivojevic, Adrian Bradbury, David Gordon, The Festival Players, Atea."

## PURBECK VALLEY FOLK FESTIVAL

15 - 18 August

Purbeck Valley Farm, CORFE CASTLE. [purbeckvalleyfolkfestival.co.uk](http://purbeckvalleyfolkfestival.co.uk). "Line-up includes Thea Gilmore."

## BEAUTIFUL DAYS

16 - 18 August

Escot Park, near OTTERY ST MARY, Devon. [beautifuldays.org](http://beautifuldays.org). "Beautiful Days is the Levellers' family music festival, featuring 7 stages, amazing site art, a huge children's area, comedy, theatre, family camping, licensed real ale bars and a great choice of food and craft stalls."



## OPEN CALL



Artists are invited to submit proposals to create new work for the 2020 b-side festival. Commissioning site responsive work in live art, sound, film and visual art.

**DEADLINE: 23 JUNE 2019**

**INFORMATION: B-SIDE.ORG.UK**



Supported using public funding by  
**ARTS COUNCIL  
ENGLAND**



# WESSEX FESTIVALS 2019

## EDINGTON FESTIVAL OF MUSIC WITHIN THE LITURGY

**18 - 25 August**

The Priory Church, EDINGTON, Wiltshire BA13 4QN. Free entry. [edingtonfestival.org](http://edingtonfestival.org). "Over 80 outstanding cathedral and collegiate choristers in three choirs sing four daily services with the most beautiful and complex music written over the centuries. Daily organ recitals."

## WATCHET LIVE

**23 - 25 August**

WATCHET, Somerset. [watchetfestival.co.uk](http://watchetfestival.co.uk). "Three live stages host more than 60 live acts, bringing a wide range of high-calibre musical acts not normally found performing in West Somerset."

## RIVER COTTAGE FESTIVAL

**24 and 25 August**

River Cottage HQ, Park Farm, Trinity Hill Road, MUSBURY, Axminster, EX13 8TB. [rivercottage.net](http://rivercottage.net). "Music, masterclasses and festival fun!"

## PURBECK INTERNATIONAL CHAMBER MUSIC FESTIVAL

**29 August - 1 September**

Various locations, ISLE OF PURBECK. [purbeck-chambermusic.org.uk](http://purbeck-chambermusic.org.uk). "PICMF 2019 will include favourites from the core chamber music repertoire, as well as music for quirky mixtures of instrument combinations, including a didgeridoo. As always, our musicians will be handpicked by Natalie Clein and we can look forward to seeing 3 former 'BBC Young Musician of the Year' winners performing together. Line-up includes Natalie Clein, Jennifer Pike, Lana Tratovšek, Max Baillie, Gareth Lubbe, Guy Johnston, Marvin Dillmann, Elizabeth Kenny, Abel Selacoe, Olivia Ray, Katya Apekisheva, Thomas Larcher, Philip Mansel."

## END OF THE ROAD

**29 August - 1 September**

Larmer Tree Gardens, TOLLARD ROYAL, Dorset, SP5 5PY. [endoftheroadfestival.com](http://endoftheroadfestival.com). "Line-up includes Beirut, Metronomy, Michael Kiwanuka, Spiritualized, Courtney Barnett, Sleaford Mods, Deerhunter, Baxter Dury, Let's Eat Grandma."

## UPTON NOBLE BEER & CIDER FESTIVAL

**30 and 31 August**

UPTON NOBLE, Somerset. [unfestival.co.uk](http://unfestival.co.uk). "A little gem of an event in an area famous for much larger festivals. Line-up includes The Branflakes."



JULIE FOWLES

## SIDMOUTH FOLK FESTIVAL

"The Sidmouth Folk Festival offers an unmissable eight days of the very best folk music, dance and song in a unique location. The stunning East Devon regency coastal town bursts into colourful life for the first week in August each year, attracting tens of thousands of visitors to over 700 events with diverse and universal appeal. Join us for some amazing headline concerts, lively roots parties, intimate sessions, ceilidhs and folk dancing, storytelling, fun family entertainment and youth-centred sessions, hands-on workshops and spectacular dance displays, the best in South West crafts and the tastiest of local food and drink. Line-up includes: Lindisfarne, Ralph McTell, Richard Thompson, Julie Fowles, Spooky Men's Chorale, Seth Lakeman, Peatbog Faeries, Steve Knightley and rising stars like Lisa O'Neill and Mama's Broke."

**2 - 9 August:** Venues throughout SIDMOUTH, East Devon. [sidmouthfolkfestival.co.uk](http://sidmouthfolkfestival.co.uk) / 01395 577952.

## LYME FOLK WEEKEND

**30 August - 1 September**

Various venues in LYME REGIS, Dorset. [lymefolk.com](http://lymefolk.com). "Great music and dancing on the Jurassic Coast."

## SWANAGE FOLK FESTIVAL

**6 - 8 September**

Sandpit Field, SWANAGE. [swanagefolkfestival.com](http://swanagefolkfestival.com). "A welcoming, happy and inspiring place to spend not only the festival weekend but if you have the time, a relaxing and enjoyable holiday."

## BRIDPORT HAT FESTIVAL

**7 September**

BRIDPORT, Dorset. [bridportthatfest.org](http://bridportthatfest.org). "The most creative, quirky, stylish and inventive headwear combines with live music, multiple competitions, demonstrations, talks, displays, shows, a hat auction, games, and much, much more, all 'topped' off by a mass hat-wearing photoshoot in Bucky Doo Square on 'Haturday'. And all you need is a hat!"

## BRIDPORT OPEN STUDIOS

**7 - 15 September**

Locations in and around BRIDPORT, West Dorset. [bridportopenstudios.co.uk](http://bridportopenstudios.co.uk).

## DEVON OPEN STUDIOS

**7 - 22 September**

Locations throughout DEVON. [devonartistnetwork.co.uk](http://devonartistnetwork.co.uk).

## PRISTON MUSIC FESTIVAL

**13 - 15 September**

Various locations in PRISTON, near Bath, BA2 9EE. [priston.org.uk](http://priston.org.uk). "A mostly free festival set in a lovely village near Bath. A mix of high calibre bands play in intimate settings. Morris Dancing, workshops, kids' stuff, sessions and stalls."

## BUDLEIGH SALTERTON LITERARY FESTIVAL

**18 - 22 September**

Locations in and around BUDLEIGH SALTERTON, Devon. [budlitfest.org.uk](http://budlitfest.org.uk).

## ENCOUNTERS

**24 - 29 September**

Watershed, BRISTOL. [encounters-festival.org.uk](http://encounters-festival.org.uk). "The UK's leading short film festival, bringing you the best in international short film, animation, and virtual reality."

## MARLBOROUGH LITERATURE FESTIVAL

**26 - 29 September**

Various locations in MARLBOROUGH, Wiltshire. [marlboroughlitfest.org](http://marlboroughlitfest.org).



Ringwood's International  
**FREE** Festival of  
Street Performance Art  
**Saturday 18th May 2019**  
10.30am - 4.30pm

This colourful and fun event will take place in the streets and squares of Ringwood: all day and all over the town.

Visitors will find an amazing variety of entertainments and fun happenings including music, song, dance, street theatre, jugglers, buskers, bands, artists and more. Ringwood will be buzzing with 'a surprise around every corner!'

A great day out for all the family!

[www.fanfareforspring.co.uk](http://www.fanfareforspring.co.uk)



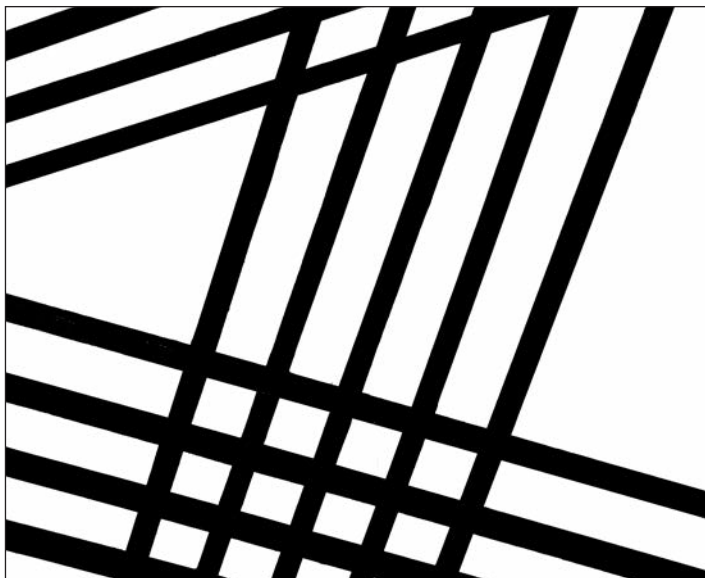
RINGWOOD



RINGWOOD



# WESSEX FESTIVALS 2019



PENNIE ELFICK

## SOMERSET ART WEEKS FESTIVAL

"This year's Silver Anniversary Somerset Art Weeks will host a diverse programme of inspiring exhibitions, events, films and installations in over 120 locations across Somerset, alongside exciting new commissions, group shows and education projects involving over 300 artists."

**21 September - 6 October:** Locations throughout SOMERSET.  
somerstartworks.org.uk.

### BOURNEMOUTH ARTS BY THE SEA FESTIVAL

**27 - 29 September**

City Centre, BOURNEMOUTH.  
artsbythesea.co.uk. "An inspirational and diverse carnivalesque celebration of the arts featuring 100 unique thought provoking performances, installations and artistic endeavours all in the heart of Bournemouth. Experience an intoxicating mix of performance art, live music, dance and spectacular outdoor shows providing fun and entertainment for all the family."

### YEOVIL SUPER SATURDAY

**28 September**

Locations throughout Town Centre, YEOVIL, Somerset. 10am - 4pm. 01935 382424. "Talented musicians give up their own time to busk for a chosen charity (this year School in a Bag) throughout the town centre, providing a melodic backdrop to other activities that include children's craft workshops, market stalls, performance and dance."

### SWANAGE BLUES FESTIVAL

**3 - 6 October**

Locations in and around SWANAGE, Dorset. swanage-blues.org. "The Swanage Blues Festival brings together an amazing collection of musicians, fans and friends for a weekend of jams, open mics and headline performances."

### PEACOCK ARTS TRAIL

**5 - 13 October**

Various locations in and around CORSHAM and CHIPPENHAM, Wiltshire. Free entry.  
peacockartstrail.co.uk. "Over 80 friendly, fascinating and very talented artists and craftspeople welcome visitors to their studios and community venues in this lovely part of the West County."

### THE TWO MOORS FESTIVAL

**11 - 20 October**

Locations across DARTMOOR and EXMOOR. thetwomoorsfestival.co.uk / 01392 665885. "Each October village halls, country houses, churches, indoor markets, railway stations, museums, auction rooms and Nissen huts spring to life with recitals, chamber concerts, operas, choral concerts, newly commissioned works, talks, exhibitions, schools' workshops, masterclasses and more... Line-up includes Dame Sarah Connolly, The English Concert, Imogen Cooper, Roderick Williams, Elizabeth Watts, Elias Quartet, Josef Purits, Lutoslawski Piano Duo, Piers Lane."

### WELLS FESTIVAL OF LITERATURE

**18 - 26 October**

Cedars Hall, WELLS, Somerset, BA5 2ST. wellsfestivalofliterature.org.uk / 01749 834483. "Now in its 27th year, our Festival promotes a love of literature by staging nine days of entertaining, informative events. Run by volunteers, the Festival ploughs profit back into the community by funding a range of local educational projects. Our four popular writing competitions attract entrants from around the globe."

### SHERBORNE LITERARY FESTIVAL

**23 - 25 October**

Various locations in SHERBORNE, Dorset. sherborneliterarysociety.com.

### YEOVIL LITERARY FESTIVAL

**31 October - 4 November**

Octagon Theatre, YEOVIL.  
yeovil literaryfestival.co.uk.

### BRIDPORT LITERARY FESTIVAL

**3 - 10 November**

Various locations in BRIDPORT, Dorset.  
bridlit.com.

### SHIINE ON WEEKENDER

**15 - 18 November**

Butlins, MINEHEAD. shiineon.com.

## THE SIDMOUTH FOLK FESTIVAL

2ND - 9TH AUGUST 2019

Richard Thompson Ear to the Past - Eye on the Future

Flook

Julie Fowlis

**Richard Thompson (Solo Acoustic)**

The Spooky Men's Chorale • Steve Knightley & Friends • Julie Fowlis  
Seth Lakeman • Peatbog Faeries • Martin Simpson • Flook • Topette!!

The Young 'Uns: The Ballad of Johnny Longstaff  
Sam Sweeney: The Unfinished Violin • Le Vent du Nord  
Sam Kelly & The Lost Boys • Lisa O'Neill • The Shee

Hannah James' JigDoll Ensemble • Amythyst Kiah • Martin Carthy  
Nancy Kerr & James Fagan • Faustus • Blackbeard's Tea Party  
Lady Malsery • Belshazzar's Feast • Merry Hell • Rowan Rheingans  
Iona Fyfe • Miranda Sykes • Jimmy Aldridge & Sid Goldsmith  
Emily Portman & Rob Harbron • Matthew Byrne • Faustus • Mama's Broke  
OBT • You Are Wolf • Rachael McShane & The Cartographers  
Kitty Macfarlane • Broom Bezzums • Granny's Attic • Ben Walker  
Jim Causley • The Askew Sisters • Banter  
Whapweasel • Token Women • Kirkophany and many more

**Lindisfarne (Pre-Festival Thursday 1st)**

**Ralph McTell (Pre-Festival Friday 2nd)**

Concerts • Ceilidhs • Folk Dances  
Roots Parties • Dance Spectaculars • Late Sessions  
Children's Festival • Huge Workshop Programme

Great Value Tickets available now.

[www.sidmouthfolkfestival.co.uk](http://www.sidmouthfolkfestival.co.uk)  
or call the box office 01395 577952

efds

MEDIA SPONSOR  
**fROOTS**  
www.froots.org.uk



## YEOVIL SUPER SATURDAY

**28 SEPTEMBER 2019**  
Yeovil Town Centre

YEOVIL BUSKFEST • BUGFEST • CRAFT FAIR  
MARKET STALLS • CHILDREN'S ACTIVITIES  
GARDENING CELEBRATIONS • WORKSHOPS  
AND LOTS MORE!

[facebook.com/yeovilsupersaturday](https://facebook.com/yeovilsupersaturday)



#WVAT10

# wylie valley ART trail

Saturday 18 - Monday 27 May

SCULPTURE  
CERAMICS  
TEXTILES  
INSTALLATION  
PAINTING  
PRINTMAKING  
RECYCLED ART  
GILDING  
DIGITAL ART  
JEWELLERY  
RESTORATION  
MOSAIC  
PHOTOGRAPHY  
WOOD  
MILLINERY  
ILLUSTRATION  
VIDEO  
FURNITURE  
CALLIGRAPHY  
ENAMEL ART  
METALWORK  
GLASS  
LETTERCARVING  
MIXED MEDIA  
DRAWING

87 VENUES / 390+ ARTISTS Free trail brochures at tourist information centres, libraries, arts centres and lots of other places. Look for the yellow trailmarker signs..

www.wvat.co.uk

wylie valley  
ART 63

# beamminster festival 2019

- music • literature
- art • theatre • comedy
- history • open air shakespeare
- boogie & blues • visual arts exhibition
- tea dance • opera • jazz • party in the park

## 22<sup>nd</sup> - 30<sup>th</sup> june

Visit [www.beaminsterfestival.com](http://www.beaminsterfestival.com) for full programme and to buy tickets online

Box Office: Yarn Barton, Beaminster DT8 3DR  
01308 862943 open from 14th May 2019

Visit local artists by following the South Dorset Open for Art Trail

**FREE GUIDE**  
200+ ARTISTS  
70+ VENUES

**OPEN FOR Art**

18 May - 2 June 2019  
[www.openforart.co.uk](http://www.openforart.co.uk)

DOMVS sculpture by the lakes  
ART WEY  
SOUTH DORSET ARTS CENTRE  
B&D

# Frome Art Trail Open Studios

6 - 14 July 2019 11am - 5pm

Your free copy of the Frome Art Trail Brochure is available from key locations in and around Frome. Details of artists, venues & opening times.

bronze resin  
jewellery photography  
paintings sculpture ceramics  
laser cutting 3D models illustration  
textiles prints installations knitting  
monoprinting metalwork wood carving  
calligraphy ceramics pottery weaving film  
stonework silver copper blown glass water  
features lights engraving dry-point pastel  
stained glass oil acrylic bas-relief recycling  
materials plaster wirework paper cutouts

info@fromeopenstudios.co.uk  
#fromeopenstudios  
Frome Festival 2019



# VISUAL ARTS

## LINDA FELCEY AND DEBBIE LUSH: 'A COUNTRY WALK'

8 June - 13 July

Hybrid Gallery, 51 High Street,  
HONITON, EX14 1PW. Tuesday -  
Saturday 10am - 5pm. 01404 43201.

## SOMERSET PRINTMAKERS: 'BIRDMAN'

10 - 17 June

44AD Gallery, 4 Abbey Street, BATH,  
BA1 1NN. 44ad.net. 11am - 5pm  
(Sunday 11am - 4pm). "Prints inspired  
by the legend of Bladud, 'English  
Icarus' and founder of Bath."

## THE KINGCOMBE GROUP

10 - 28 June

Ilminster Arts Centre, The Meeting  
House, East Street, ILMINSTER, TA19  
0AN. Monday - Friday 9.30am -  
4.30pm, Saturday 9.30am - 2.30pm.  
themeetinghouse.org.uk. "Textile art."

## ANYA BEAUMONT AND JO TAYLOR: 'FOURISH'

10 June - 13 July

The Pound, Pound Pill, CORSHAM,  
SN13 9HX. 9.30am - 4pm. 01249  
701628. "New sculptural work."

## STEVE NEVILLE AND DEBRA SWEENEY

14 June - 15 July

Gallery On The Square, Poundbury,  
DORCHESTER, DT1 3BL. Monday -  
Saturday 9.30am - 5pm, Sunday 11am -  
4pm. gallerypoundbury.co.uk. Ceramics  
and paintings.



## GROUP 7: 'COLOUR VALUES'

15 June - 20 July

ACE Arts, Market Place, SOMERTON,  
TA11 7AT. Tuesday - Saturday 10am -  
5pm. acearts.co.uk. "Expect a riot of  
colour and texture from Brian Bishop,  
Martyn Brewster, Bonnie Brown, Fran  
Donovan, Michelle Griffiths, Ursula  
Leach (above) and Peter Symonds."

## 'FIRE: FLASHES TO ASHES IN BRITISH ART 1692 - 2019'

15 June - 1 September

Royal West of England Academy,  
Queen's Road, Clifton, BRISTOL, BS8  
1PX. Tuesday - Saturday 10am -  
5.30pm, Sunday 11am - 5pm. £7.95 /



ANNE-LOUISE BELLIS 'SPRING BLUES' (Acrylic on canvas)

## A DIFFERENT LIGHT

"Painting, printmaking and jewellery by six artists from Dorset and Somerset, each with their own take on the vivid and varied local natural and architectural landscapes surrounding them."

**1 - 9 June:** The Old Cow Shed Studio, Manor Farm, GLANVILLES WOOTTON, near Sherborne, DT9 5PZ.  
Monday - Friday 10am - 4pm, Saturday and Sunday 10am - 6pm. 07970 797748 / theoldcowshedstudio.co.uk.

£6.75. rwa.org.uk. "A major exhibition  
tracing the representation of fire in  
British art across the last four centuries,  
exploring the symbolism and meaning  
the element has had for artists  
throughout history."

## 'COLOURS OF DORSET'

29 June - 7 July

Eype Centre for the Arts, St Peters  
Chapel, Mount Lane, EYPE, Bridport,  
DT6 6AT. 10am - 5pm. 07958 756368 /  
eypechurcharts.co.uk. "A third annual

exhibition of uniquely colourful and  
inspiring paintings by Caroline  
Liddington and Lynne Grace. Highly  
original, large and small paintings of  
the ocean, plus intriguing interior and  
exterior landscapes."



**JEREMY GARDINER** works on paper  
Lyme Regis to Old Harry Rocks  
**AKIKO HIRAI** ceramics  
**PETTER SOUTHALL** furniture  
11 May - 30 June

**SLADERS YARD**

West Bay t: 01308 459511 Open every day sladersyard.co.uk Follow us @sladersyard





# PERFORMANCE

May and June 2019



## MUGENKYO DRUMMERS: TRIBE 25

Mugenkyo, the UK's original touring Taiko Tribe, are back on the road with a brand new show of skill, stamina and red-hot rhythms to stir the soul that arrives at Lighthouse, Poole's Centre for the Arts, on Tuesday 14 May.

In their 25th year as Europe's longest established Taiko organisation, Mugenkyo celebrate the growth of their Tribe of performers from across the globe with the latest captivating performance of sharp synchronisation, dramatic choreography and sumptuous soundscapes, all wrapped up in a breath-taking display of high energy and powerful rhythms played on huge Taiko drums.

Formed in 1994, Mugenkyo are at the forefront of the Taiko art-form in Europe, forging a new path with their innovative approach honed by years on the touring circuit.

In recent years they have developed their unique style still further, fusing the traditional Taiko spirit with a modern image and sound, dramatic lighting, theatricality and humour, and a contemporary musical sensibility that has captivated audiences the world over.

As well as their extensive touring, Mugenkyo have just released their sixth album *Way of the Drum* and have

also released three concert DVDs, making them the most prolific Taiko group outside Japan.

Mugenkyo have appeared at the Brit Awards and television shows including BBC *Last Night of the Proms* as they push the boundaries of the art-form with their genre-crossing collaborations, from the highly acclaimed *The World of the Gods* with the Scottish National Jazz Orchestra to the fiddle, tabla and Indian dance piece created for the Edinburgh Mela Festival.

**14 May:** Lighthouse, 21 Kingland Road, POOLE, BH15 1UG. 7.45pm. 01202 280000 / lighthousepoole.co.uk.

## Every job starts with a blank canvas.

At AztecMedia we have over 25 years experience in design and marketing. So whether you're an independent artist needing a website or a large venue looking for promotional material, everything we do is tailored to suit who you are.

**aztecmedia**  
born to be creative®

01935 477 073 • AztecMedia.eu





# PERFORMANCE



## 'THE REMAINS OF THE DAY'

**30 April - 11 May**

Salisbury Playhouse, Malthouse Lane, SALISBURY, SP2 7RA. 7.30pm (Thursday and Saturday matinees 2.15pm). £27 / £13. 01722 320333 / wiltshirecreative.co.uk.

## 'THE CARPENTERS STORY'

**2 May**

Octagon Theatre, Hendford, YEOVIL, BA20 1UX. 7.30pm. £25. 01935 422884 / octagon-theatre.co.uk.

## 'TROWBRIDGE LAUGHS'

**2 May**

Trowbridge Town Hall, Market Street, TROWBRIDGE, BA14 8EQ. 8pm. £10. 01225 774306 / townhallarts.co.uk.



## 'THE STRANGER ON THE BRIDGE'

**2 - 4 May**

Salisbury Playhouse, Malthouse Lane, SALISBURY, SP2 7RA. 7.45pm (Saturday matinee 2.45pm). £13.50. 01722 320333. "Moving and thoughtful true life story of one man's determination to find his Good Samaritan."

## 'NOTFLIX: AN IMPROVISED MUSICAL'

**3 May**

Bridport Arts Centre, 9 South Street, BRIDPORT, DT6 3NR. 7.30pm. £10. bridport-arts.com. "An all-female cast use audience suggestions of recently watched films to create a musical in front of your very eyes!"

## 'SAMSWARA'

**4 May**

Axminster Minster, Church Street, AXMINSTER, EX13 5AR. 7.30pm. £12 / £10. 01297-33595 / samswara.com. "The brilliant sitar of Ricky Romain in duet with Jon Sterckx's tabla wizardry."



## MORIARTY WINDS

"Named after Sherlock Holmes' infamous adversary Professor Moriarty, the Moriarty Winds is a group of energetic young musicians who have performed together since September 2015 with the common aim of playing a variety of classical and contemporary repertoire in characterful and accessible ways."

**13 June:** Uplyme Church, Pound Lane, Uplyme, LYME REGIS, DT7 3TT. 7.30pm. 01297 444662 / helmtickets.com.

**14 June:** Bridport Arts Centre, 9 South Street, BRIDPORT, DT6 3NR. 11am. £12. 01308 424204 / bridport-arts.com.

**14 June:** Creative Innovation Centre, Memorial Hall, Paul Street, TAUNTON, TA1 3PF. 6.45pm. £15. 01823 337477 / creativeinnovationcentre.co.uk.

**16 June:** St Roch Church, Pendomer, YEOVIL, BA22 9PH. 7.30pm. £15. 01823 252658. [concertsinthewest.org](http://concertsinthewest.org)

## 'THE GOVERNMENT INSPECTOR'

**4 May**

Bridport Arts Centre, 9 South Street, BRIDPORT, DT6 3NR. 7.30pm. £16. 01308 424204 / bridport-arts.com. "A Gogol satire that has been updated to present a hilarious, accessible comedy where, in order to keep the Government Inspector happy, everyone loses their moral compass."

## PETER KNIGHT'S GIGSPANNER

**4 May**

Dorchester Arts, The Corn Exchange, High East Street, DORCHESTER, DT1 1HF. 7.30pm. £16 / £14. 01305 266926 / dorchesterarts.org.uk. "Gigspanner, led by legendary Steeleye Span fiddle player Peter Knight, has established a reputation as a ground-breaking force on the British folk scene."

## JOHN ETHERIDGE AND VIMALA ROWE

**4 May**

Café Sladers, Sladers Yard, WEST BAY, Bridport, DT6 4EL. 8pm. £18. 01308 459511 / sladersyard.co.uk. "World-famous guitarist and fabulous vocalist play jazz and world music, some classics, some original music, with plenty of banter and laughs."

MUSIC STUDIO  
VENUE  
ACCOMMODATION  
WILDLIFE AND FARM

MILL FARM MUSIC  
BRADFORD ABBAS, DORSET  
[WWW.MILLFARM-DORSET.COM](http://WWW.MILLFARM-DORSET.COM)  
01935 413168



# PERFORMANCE

## 'RICH HALL'S HOEDOWN'

4 May

Octagon Theatre, Hendford, YEOVIL, BA20 1UX. 8pm. £18. 01935 422884.

## REGINALD D HUNTER

4 May

Lighthouse, 21 Kingland Road, POOLE, BH15 1UG. 8pm. 01202 280000.

## 'THE TRUTH ABOUT MEN'

4 May

Lighthouse, 21 Kingland Road, POOLE, BH15 1UG. 8pm. 01202 280000. "Scott Lavene's one-man show is full of songs and stories. Imagine Ian Dury with a touch of Stephen Sondheim."

## 'FISSURE'

4 and 6 May

Exeter Phoenix, Bradninch Place, Gandy Street, EXETER, EX4 3LS. 7pm. £10 / £8. exeterphoenix. "A doctor and a space shuttle engineer fall in love - but creating the shuttle engines has terrible repercussions on people's health. Can you love someone who represents everything you hate?"

## GEORGIE FAME & THE BBC BIG BAND

5 May

Lighthouse, 21 Kingland Road, POOLE, BH15 1UG. 7.30pm. 01202 280000.

## BOWJANGLES: 'EXCALIBOW'

5 May

Village Hall, New Road, Norton Sub Hamdon, TA14 6SF. 7pm. £10 / £6. 01935 881227.

## 'DEATH AND THE MAIDEN'

7 May

Bridport Arts Centre, 9 South Street, BRIDPORT, DT6 3NR. 7.30pm. £16. bridport-arts.com. "First-rate thriller."



## 'THE DRAMATIC EXPLOITS OF EDMUND KEAN'

8 May

Dorchester Arts, The Corn Exchange, High East Street, DORCHESTER, DT1 1HF. 7.30pm. £12 / £10. 01305 266926. "Ian Hughes celebrates the spirit of one of the most unique talents that British theatre has ever produced, and who has fascinating historic links with Dorchester."



## MEGSON

"The BBC Radio 2 Folk Award nominees have gained fame on the British folk scene, not only for their arresting and intelligent songwriting, but for their exquisite musicianship and northern humour."

**10 May:** Dorchester Arts, The Corn Exchange, High East Street, DORCHESTER, DT1 1HF. 7.30pm. £15 / £13. 01305 266926 / dorchesterarts.org.uk.

## 'ENDLESS FEATURING N:DLESS'

8 May

Lyric Theatre, BRIDPORT, DT6 3LX. 8pm. £12 / £5. 01308 424901. "A tale of (very little) sex, (a smattering of) drugs and the unexpected phobias from a life of rock and roll."

## 'STREET IN SONG'

8 May

Crispin Hall, 83 High Street, STREET, BA16 0EZ. 6.30pm. 01458 447248 / crispinhallstreet.org.uk.

## BSO: 'CZECH MATES'

8 May

Lighthouse, 21 Kingland Road, POOLE, BH15 1UG. 7.30pm. 01202 280000.



## MODOU NDIAYE AND BAND

9 May

Village Hall, WOOTTON FITZPAINE, DT6 6NF. 7.30pm. £10 / £7. 01297 560948 / artsreach.co.uk. "Uniting traditional and modern sounds, this energetic band will leave you invigorated and inspired!"

## KEVIN CLIFTON: 'BURN THE FLOOR'

9 May

Lighthouse, 21 Kingland Road, POOLE, BH15 1UG. 7.30pm. 01202 280000. "Strictly Come Dancing favourite Kevin Clifton joins up with the its newest pro Graziano Di Prima in the show that has revolutionised the ballroom style."

## RACHEL NEWTON

9 May

Bridport Arts Centre, 9 South Street, BRIDPORT, DT6 3NR. 7.30pm. £13. 01308 424204 / bridport-arts.com. "Singer and harpist Rachel Newton specialises in interpreting traditional folk songs in both English and Scottish Gaelic as well as writing and performing her own instrumental pieces."

## 'THE LION, THE WITCH AND THE WARDROBE'

9 - 11 May

Lighthouse, 21 Kingland Road, POOLE, BH15 1UG. 7.30pm (Wednesday matinee 2.30pm). 01202 280000. "Musical adaptation of CS Lewis' classic adventure, featuring the BSO's new music ensemble Kokoro."

## 'THE CURIOUS CASE OF BENJAMIN BUTTON'

9 - 11 May

Salisbury Arts Centre, Bedwin Street, SALISBURY, SP1 3UT. 7.45pm (Saturday matinee 2.45pm). £13.50. 01722 320333. "A most curious story of one man and the timeless tales of a love that defies all odds."

## BELSHAZZAR'S FEAST

10 May

Speedwell Hall, Abbey Street, CREWKERNE, TA18 7HY. 7pm. £12. 07877 206124. "Paul Sartin (singer, oboist, fiddler) and Paul Hutchinson (accordionist) have a reputation for slapstick spoken, physical and musical comedy as well as fine musicianship."

## MODOU NDIAYE AND BAND

10 May

Village Hall, BUCKLAND NEWTON, DT2 7BZ. 7.30pm. £10 / £7. 01300 345455 / artsreach.co.uk. See 9 May.

## MAGNOLIA JAZZ BAND

10 May

Iminster Arts Centre, The Meeting House, East Street, ILMINSTER, TA19 0AN. 8pm. £14. 01460 54973. "New Orleans trad jazz featuring rare tunes as well as familiar favourites."

## THE DRIFTERS

10 May

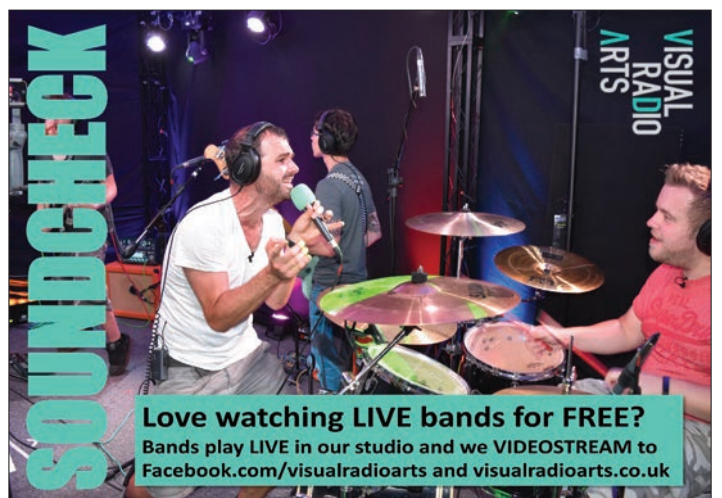
Lighthouse, 21 Kingland Road, POOLE, BH15 1UG. 7.30pm. 01202 280000.

## SUBSCRIBE TO EVOLVER

£24 for 6 issues starting with EVOLVER 112 (July / August 2019 issue)

NAME
ADDRESS
POSTCODE

Send cheque (payable to 'Evolver Media') to:  
EVOLVER MEDIA, 8 BUCKLAND ROAD, PEN MILL TRADING ESTATE,  
YEOVIL, SOMERSET BA21 5EA





# PERFORMANCE

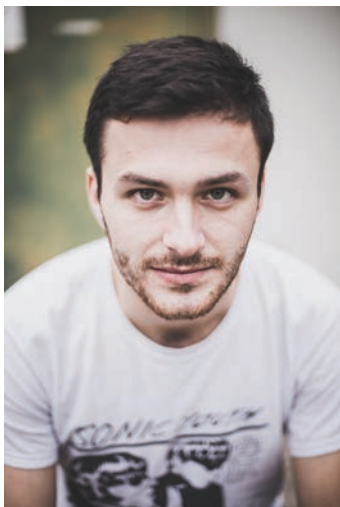


## THE EDIT

"A gripping new play about forgiveness, love and self preservation set in the turbulent world of modern romance."

**9 May:** Lighthouse, 21 Kingland Road, POOLE, BH15 1UG. 8pm. 01202 280000 / lighthousepoole.co.uk.

**11 May:** Trowbridge Town Hall, Market Street, TROWBRIDGE, BA14 8EQ. 7.30pm. £11 / £9. 01225 774306 / townhallarts.co.uk.



### ROLF LUFT QUARTET

**10 May**  
Lighthouse, 21 Kingland Road, POOLE, BH15 1UG. 8pm. 01202 280000. Jazz.

### MODOU NDIAYE AND BAND

**11 May**  
Portman Hall, SHILLINGSTONE, DT11 0SF. 7.30pm. £10 / £7. 07870 972089 / artsreach.co.uk. See 9 May.

### ROBBIE MCINTOSH, KEN WATKINS, SIMON SWARBRICK, LUCY WATKINS

**11 May**  
Village Hall, Malthouse Meadow, PORTESHAM, DT3 4N. 7.30pm. £14. 01305 837299. "A very special concert featuring four accomplished musicians, together for an evening of acoustic music from the genres of folk, country, blues, and jazz."

### KOKORO: 'A NIGHT IN VIENNA'

**12 May**  
Dorchester Arts, The Corn Exchange, High East Street, DORCHESTER, DT1 1HF. 6.30pm. £15 / £13. 01305 266926 / dorchesterarts.org.uk. "In a fascinating programme, the supremely talented Kokoro show that the work of the Second Viennese School is far from

being universally unapproachable and difficult, especially with their chamber version of Schönberg's exquisite tone poem, *Verklärte Nacht*."

### MORGAN & WEST

**12 May**  
Neeld Community and Arts Centre, CHIPPENHAM, SN15 3ER. 2pm. £10. 01249 446699 / neeld.co.uk. "Brain boggling illusion and good old fashioned tom-foolery!"

### PHOENIX BRASS BAND WITH MAWGAN STOTT

**12 May**  
St Bartholomew's Church, CREWKERNE. 3pm. £12 / £10. 01460 73960. "Varied music and song from Bernstein and Carl Jenkins to Wagner!"

### ACOUSTIC JAZZ

**13 May**  
Bluebird Social Club, 4 Ham Lane, LONGHAM, BH22 9DP. 7.30pm. £10 / £12. 01202 873071 / bournemouthbluebirdjazz.uk. Jazz.

### 'THE ISLE OF BRIMSKER'

**15 May**  
Tacchi-Morris Arts Centre, School Road, TAUNTON, TA2 7SH. 11am and 1.30pm. £10. 01823 414141 / tacchi-morris.com. "A new multi-sensory story of adventure and homecoming from *Frozen Light*, specialists in making theatre for audiences with Profound and Multiple Learning Disabilities."

### BSO: 'ELGAR'S DREAM'

**15 May**  
Lighthouse, 21 Kingland Road, POOLE, BH15 1UG. 7.30pm. 01202 280000 / lighthousepoole.co.uk.

### JULIAN CLARY: 'BORN TO MINCE'

**15 May**  
Lighthouse, 21 Kingland Road, POOLE, BH15 1UG. 7.30pm. 01202 280000 / lighthousepoole.co.uk.

### 'STREET IN SONG'

**15 May**  
Crispin Hall, 83 High Street, STREET, BA16 0EZ. 6.30pm. 01458 447248 / crispinhallstreet.org.uk.



Connecting Rural Dorset with the Arts

## NEW SUMMER SEASON

of professional theatre and music across Dorset



See our full programme of events and book tickets online at:

**artsreach.co.uk**

Tel: 01305 269512 | info@artsreach.co.uk | Charity no. 1058198

★★★★★  
"...IMPOSSIBLE NOT TO LIKE...  
A VERY IMPRESSIVE BAND" THE STAGE



# Sounds of the 80s

WITH THE ZOOTs



## SATURDAY 22 JUNE

7.30PM

## BRIDPORT ARTSCENTRE

9 SOUTH STREET  
BRIDPORT DT6 3NR  
01308 424204  
bridport-arts.com



# Lighthouse

POOLE'S CENTRE FOR THE ARTS

## THREE PLAYS FOR £30\*

Tangram Theatre brings you three brand new shows by James Rowland.

**TIMES** 8pm | **TICKETS** £30\* for all three shows (£14 individual show)  
**THE SHERLING STUDIO**



**Saturday 8 June**

### TEAM VIKING

Directed by Daniel Goldman  
Five years ago, James's best friend was diagnosed with heart cancer and told he had three months to live. His last wish was to be given a full Viking burial. This is the remarkable, hilarious and heart-lifting story of how James gave his best mate the send-off he wanted.



**Saturday 22 June**

### A HUNDRED DIFFERENT WORDS FOR LOVE

Three years ago, James met the love of his life. A year ago, they broke up. This is James's story of falling in love and landing broken hearted. It's also about him being Best Man of Honour at Sarah and Emma's wedding and a quest: to find the right words to make sense of love.



**Saturday 6 July**

### REVELATIONS

Last year, James's best friends, Sarah and Emma, asked him for his sperm. This is the tale of what happened next and what happened after that. A storytelling show about friendship, faith, and always trying to do the right thing. Features live music, nudity and both laughter and tears.

\*T&Cs: Offer only valid on Team Viking, A Hundred Different Words for Love and Revelations, when tickets are purchased in the same transaction. Cannot be used on tickets already purchased or in conjunction with any other offer.  
Booking Fees: Prices quoted are for tickets booked in person at the Ticket Office. Tickets booked via telephone or online are subject to a booking fee of up to £1.75 per ticket

01202 280000

[www.lighthousepoole.co.uk](http://www.lighthousepoole.co.uk)



## PERFORMANCE



### NORTHANGER ABBEY

"A timeless adaptation of Jane Austen's novel about growing up and getting it all wrong, told in an accessible, energetic style."

**23 May:** Dorchester Arts, The Corn Exchange, High East Street, DORCHESTER, DT1 1HF. 7.30pm. £14 / £12. 01305 266926 / [dorchesterarts.org.uk](http://dorchesterarts.org.uk).

**30 May:** Lighthouse, 21 Kingland Road, POOLE, BH15 1UG. 8pm. 01202 280000 / [lighthousepoole.co.uk](http://lighthousepoole.co.uk).

#### THE CHURCHFITTERS

**16 May**

Salisbury Arts Centre, Bedwin Street, SALISBURY, SP1 3UT. 8pm. £14.50. 01722 320333. "Folk."

#### PETE CANTER AND SIMON LATARCHE

**17 May**

Bridport Arts Centre, 9 South Street, BRIDPORT, DT6 3NR. 8pm. £10. 01308 424204. "Swing and Latin jazz."

#### THE ILLEGAL EAGLES

**17 May**

Westlands Entertainment Venue, Westbourne Close, YEOVIL, BA20 2DD. 7.30pm. £27.50. [westlandseyovil.co.uk](http://westlandseyovil.co.uk).

#### FLYING FOLK

**17 May**

Ilminster Arts Centre, The Meeting House, East Street, ILMINSTER, TA19 0AN. 8pm. £10. 01460 54973.

#### BACCHAEIA QUINTET

**18 May**

Ilminster Arts Centre, The Meeting House, East Street, ILMINSTER, TA19 0AN. 8pm. £16. 01460 54973. "Wind quintet playing quintessentially French music."

#### KITTY MACFARLANE

**18 May**

Cotleigh Brewery, Ford Road, WIVELISCOMBE, TA4 2RE. 8pm. £12 / £10. 01984 623308. "Kitty Macfarlane is a Bristol-based songwriter and accomplished guitar player. Her sharply observed narrative songs are pure poetry, rich with visual imagery and writ-ten with an eco-eye."

#### COLIN SELL: 'CLUELESS AT THE KEYS'

**18 May**

Dorchester Arts, The Corn Exchange, High East Street, DORCHESTER, DT1 1HF. 7.30pm. £15 / £13. 01305 266926.

#### THE DECADETTES

**19 May**

Greenhill Gardens, The Esplanade, WEYMOUTH, DT3 6BH. 2pm. Free entry. 01305 775829 / [greenhill-gardens.co.uk](http://greenhill-gardens.co.uk).

#### DART VALLEY STOMPERS

**20 May**

Bluebird Social Club, 4 Ham Lane, LONGHAM, BH22 9DP. 7.30pm. £10 / £12. 01202 873071 / [bournemouthbluebirdjazz.uk](http://bournemouthbluebirdjazz.uk). Jazz.

#### 'THE SOLID GOLD ROCK'N'ROLL SHOW'

**21 May**

Octagon Theatre, Hendford, YEOVIL, BA20 1UX. 7.30pm. £32.50. 01935 422884 / [octagon-theatre.co.uk](http://octagon-theatre.co.uk). "Celebrating Marty Wilde's 80th birthday with Eden Kane, Mike Berry, The Wildcats, and Nancy Ann Lee."

#### EMMA JOHNSON AND GILDAS QUARTET

**22 May**

Octagon Theatre, Hendford, YEOVIL, BA20 1UX. 7.30pm. £18 / £16.50 / £15. 01935 422884 / [octagon-theatre.co.uk](http://octagon-theatre.co.uk).

#### 'STREET IN SONG'

**22 May**

Crispin Hall, 83 High Street, STREET, BA16 0EZ. 6.30pm. 01458 447248 / [crispinhallstreet.org.uk](http://crispinhallstreet.org.uk).

#### 'OUR HOUSE'

**22 - 25 May**

Lighthouse, 21 Kingland Road, POOLE, BH15 1UG. 7.30pm (Saturday matinee 2.30pm). 01202 280000. "Poole and Parkstone Productions stage the smash hit musical about a 16-year-old boy who makes a split-second decision that will change his life forever."

#### HENNING WEHN

**23 May**

Westlands Entertainment Venue, Westbourne Close, YEOVIL, BA20 2DD. 7.30pm. £21.50. 01935 422884 / [westlandseyovil.co.uk](http://westlandseyovil.co.uk). "What's he still doing here anyway? Well, his lack of transferable skills is what keeps him here and his belief that practise makes perfect is what keeps him going."

#### JULIAN CLARY: 'BORN TO MINCE'

**23 May**

Octagon Theatre, Hendford, YEOVIL, BA20 1UX. 7.30pm. £26 / £24. 01935 422884 / [octagon-theatre.co.uk](http://octagon-theatre.co.uk).



# PERFORMANCE

## LEO SAYER

**24 May**  
Octagon Theatre, Hendford, YEOVIL,  
BA20 1UX. 7.30pm. £34. 01935 422884  
/ octagon-theatre.co.uk.

## 'MA BESSIE AND HER BLUES TROOP'

**24 May**  
Bridport Arts Centre, 9 South Street,  
BRIDPORT, DT6 3NR. 7.30pm. £18.  
01308 424204 / bridport-arts.com.

## 'LES MUSICALS'

**24 May**  
Lighthouse, 21 Kingland Road, POOLE,  
BH15 1UG. 7.30pm. 01202 280000.

## THE EDUARDO NIEBLA EXPERIENCE

**24 May**  
Lighthouse, 21 Kingland Road, POOLE,  
BH15 1UG. 8pm. 01202 280000.  
"Flamenco jazz fusion."

## 'SONGWRITERS IN THE ROUND'

**24 May**  
The Flying Fish, Wood Road, Ashill,  
ILMINSTER, TA19 9NX. 7pm. £20  
(includes dinner). 01823 480467 /  
theflyingfishsomerset.co.uk. "An  
intimate night of acoustic music with  
five established singer songwriters  
trading original music."

## ALAN BARNES, ART THEMEN AND THE DAVE NEWTON TRIO

**24 May**  
Ilminster Arts Centre, The Meeting  
House, East Street, ILMINSTER, TA19  
0AN. 8pm. £18. 01460 54973 /  
themeetinghouse.org.uk. "Three of the  
UK's best jazz musicians under one  
roof, for an evening of absolutely  
cracking modern jazz."

## MATTHEW BOURNE: 'SWAN LAKE'

**25 May**  
Bridport Arts Centre, 9 South Street,  
BRIDPORT, DT6 3NR. 7.30pm. £10.  
01308 424204 / bridport-arts.com.  
"This thrilling, audacious and witty  
production is perhaps still best known  
for replacing the female corps-de-ballet  
with a menacing male ensemble, which  
shattered convention, turned tradition  
upside down and took the dance world  
by storm."

## 'THE BIRD SHOW'

**25 May**  
Trowbridge Town Hall, Market Street,  
TROWBRIDGE, BA14 8EQ. 11am. £10 /  
£8. 01225 774306 / townhallarts.co.uk.  
"With frolics and foraging, flitting,  
flying and two unusual feathery friends,  
this is a story of friendship, courage  
and adventure."



## PASSIONATE MACHINE

"What would you change if you could travel through time? This multi-award winning original blend of science, sci-fi, Schwarzenegger and self-determination, Rosy Carrick explores the realities of time travel."

**30 May:** The Theatre Shop, 6 Triangle Centre, CLEVEDON, BS21 6XX.  
7.30pm. £12. 01275 400225 / theatreshop.org.uk.

## 'THE SUMMER OF LOVE'

**25 May**  
Octagon Theatre, Hendford, YEOVIL,  
BA20 1UX. 7.30pm. £25 / £24. 01935  
422884. "An eclectic explosion of  
flowers, psychedelia, freedom, peace  
and love and, of course, timeless music  
that inspired a generation."

## 'LAUGHING BOY COMEDY CLUB'

**30 May**  
Westlands Entertainment Venue,  
Westbourne Close, YEOVIL, BA20 2DD.  
8pm. £10 / £9. 01935 422884 /  
westlandsyeovil.co.uk.

## BLACK CAT JAZZ

**30 May**  
Martock Church, Church Street,  
MARTOCK, TA12 6JL. 7.30pm. £9 / £8.  
01935 829576 / 01935 829576.  
"Traditional jazz revival music with a  
mixture of trumpet and trombone."

## SQUASHBOX THEATRE:

### 'UNIVERSARAMA!'

**30 May**  
Dorchester Arts, The Corn Exchange,  
High East Street, DORCHESTER, DT1  
1HF. 1.30pm. £8 / £6. 01305 266926 /  
dorchesterarts.org.uk.

## 'THE WIND IN THE WILLOWS'

**30 May - 1 June**  
Octagon Theatre, Hendford, YEOVIL,  
BA20 1UX. 7pm (Saturday matinee  
2pm). £16 / £14. 01935 422884.

## 'QUENTIN CRISP: NAKED HOPE'

**31 May**  
Bridport Arts Centre, 9 South Street,  
BRIDPORT, DT6 3NR. 7.30pm. £12.  
01308 424204 / bridport-arts.com. "A  
gloriously uplifting salute to a true one-  
off and a timely reminder of the urgent  
necessity to live every day as your real  
self, no matter what they say."

## ENGLISH TOURING OPERA:

### 'MACBETH'

**31 May**  
Lighthouse, 21 Kingland Road, POOLE,  
BH15 1UG. 7.30pm. 01202 280000.

## ENGLISH TOURING OPERA:

### 'IDOMENEO'

**1 June**  
Lighthouse, 21 Kingland Road, POOLE,  
BH15 1UG. 7.30pm. 01202 280000.  
"One of Mozart's greatest operas."

## 'A NIGHT OF BLUES AND BOOGIE'

**1 June**  
Lighthouse, 21 Kingland Road, POOLE,  
BH15 1UG. 8pm. 01202 280000.

## THE PICCADILLY ORCHESTRA

**1 June**  
Westlands Entertainment Venue,  
Westbourne Close, YEOVIL, BA20 2DD.  
7.30pm. £22. 01935 422884.

## ALFIE MOORE: 'FAIR COP UNLEASHED!'

**1 June**  
Neeld Community and Arts Centre,  
CHIPPENHAM, SN15 3ER. 8pm £16.  
01249 446699 / neeld.co.uk.

## BALLET CENTRAL

**1 and 2 June**  
Bridport Arts Centre, 9 South Street,  
BRIDPORT, DT6 3NR. Saturday 7.30pm,  
Sunday 2pm. £14. 01308 424204.  
"Exciting new dance talent."

## FARRAGO

**2 June**  
Greenhill Gardens, The Esplanade,  
WEYMOUTH, DT3 6BH. 2pm. Free  
entry. 01305 775829 / greenhill-  
gardens.co.uk.

## 'OYSTERS'

**5 June**  
Dorchester Arts, The Corn Exchange,  
High East Street, DORCHESTER, DT1  
1HF. 7.30pm. £14 / £12. 01305 266926  
/ dorchesterarts.org.uk. "A new dark  
comedy with live music, shining a  
powerful spotlight on composer  
Johannes Brahms."

**caldecourt**  
productions

Rémy Lloyd LRPS  
Esmé Lloyd LRPS  
**07710 618072**

caldecourt@hotmail.com

caldecourtproductions.com



PHOTOGRAPHY





## RIOTS AND LOBSTERS

"Hear tales of riots and lobsters, fishermen and miners, corrupt officials and power-driven politicians, pioneers, saboteurs. Sometimes through folk song, sometimes ska or swing, lyrical laments and brass arrangements will tell the stories and bring to life the worlds created by Cornish playwright Nick Darke and composer Jim Carey."

**4 May:** Salisbury Arts Centre, Bedwin Street, SALISBURY, SP1 3UT. 8pm. £14. 01722 320333 / wiltshirecreative.co.uk.

**24 May:** Village Hall, CORFE CASTLE, BH20 5EE. 7.30pm. £10 / £7. 07590 352219 / artsreach.co.uk.

### 'HORMONAL HOUSEWIVES'

**5 June**  
Octagon Theatre, Hendford, YEOVIL, BA20 1UX. 7.30pm. £25 / £23.50. 01935 422884. "A hilarious, no-holds-barred romp through the joys of being a fabulous 21st century woman."

### HELENA MACE, MARKY DAWSON, EDD BLEACH

**5 June**  
Lighthouse, 21 Kingland Road, POOLE, BH15 1UG. 8pm. 01202 280000. "The latest in the series of showcases for new and unsigned local music talent."

### THE BARRICADE BOYS

**6 June**  
Lighthouse, 21 Kingland Road, POOLE, BH15 1UG. 7.45pm. 01202 280000.

### 'JOHNNY CASH ROADSHOW'

**6 June**  
Octagon Theatre, Hendford, YEOVIL, BA20 1UX. 7.30pm. £22 / £20.50. 01935 422884 / octagon-theatre.co.uk.

### BEJE

**7 June**  
Bridport Arts Centre, 9 South Street, BRIDPORT, DT6 3NR. 8pm. £10. 01308 424204 / bridport-arts.com. Jazz.

### EDGELARKS

**7 June**  
The Beehive, Dowell Street, HONITON, EX14 1LZ. 8pm. £14. 01404 384050 / beehivehoniton.co.uk. "BBC Folk award winners Phillip Henry and Hannah Martin (Edgelarks) launch their new album 'Feather'."

### 'JUST LIKE THAT'

**7 June**  
Bridport Arts Centre, 9 South Street, BRIDPORT, DT6 3NR. 7.30pm. £17. 01308 424204 / bridport-arts.com.

### CHRIS NORMAN & HIS BAND

**8 June**  
Lighthouse, 21 Kingland Road, POOLE, BH15 1UG. 7.45pm. 01202 280000 / lighthousepoole.co.uk.

### PHILIPPA MO

**8 June**  
Café Sladers, Sladers Yard, WEST BAY, Bridport, DT6 4EL. 8pm. £15. 01308 459511 / sladersyard.co.uk.

### 'TEAM VIKING'

**8 June**  
Lighthouse, 21 Kingland Road, POOLE, BH15 1UG. 8pm. 01202 280000 / lighthousepoole.co.uk. "James Rowland's remarkable, hilarious and heart-lifting one-man show about how he gave his best mate the Viking send-off that had been his dying wish."

### ALBERT LEE AND HIS BAND

**9 June**  
Dorchester Arts, The Corn Exchange, High East Street, DORCHESTER, DT1 1HF. 7.30pm. £25 / £23. 01305 266926 / dorchesterarts.org.uk. "Double Grammy Award-winning guitarist Albert Lee is a true legend of rock and roll, country and blues."

### 'FERAL'

**9 June**  
Trowbridge Town Hall, Market Street, TROWBRIDGE, BA14 8EQ. 2pm. £10. 01225 774306 / townhallarts.co.uk. "A compelling one-woman show exploring racism, community, the gypsy experience and the conflict between logic and intuition."

### 'THE LIBRARY OF LOST MEMORIES'

**9 June**  
Lyric Theatre, BRIDPORT, DT6 3LX. 8pm. £12 / £5. 7.30pm. £12 / £5. 01308 424901. "This inventive, poignant and very entertaining show explores the nature of memory, and the complexity, simplicity and beauty of the human mind."

### BLUEBIRD JAZZ BAND

**10 June**  
Bluebird Social Club, 4 Ham Lane, LONGHAM, BH22 9DP. 7.30pm. £10 / £12. 01202 873071 / bournemouthbluebirdjazz.uk. Jazz.



### 'LIVING SPIT'S LIVING QUIZ'

**11 June**  
Village Hall, CHARMOUTH, DT6 6QT. 7.45pm. £12. 07967 759135 / artsreach.co.uk. "Armed with just a guitar, double bass and ukulele, Living Spit mix improvisation techniques with their own unique performance style, which happily subverts the familiar pub quiz format, resulting in an explosively exciting live quiz."

### 'HORMONAL HOUSEWIVES'

**11 June**  
Lighthouse, 21 Kingland Road, POOLE, BH15 1UG. 7.45pm. 01202 280000 / lighthousepoole.co.uk. See 5 June.

### 'LIVING SPIT'S LIVING QUIZ'

**12 June**  
Village Hall, BROADMAYNE, DT2 8EW. 7.30pm. £12 / £9. 07443 659912 / artsreach.co.uk. See 11 June.

### 'LIVING SPIT'S LIVING QUIZ'

**13 June**  
Pamela Hambro Hall, WINTERBORNE STICKLAND, DT11 0NT. 7.30pm. £10 / £7. 01258 880920. See 11 June.

## 4 COLOURS to make a THOUSAND SHADES

#COLOURINGYOURFUTURE

**STEPHENS & GEORGE  
PRINT GROUP**

WWW.STEPHENSANDGEORGE.CO.UK

01685 388888 | SALES@STEPHENSANDGEORGE.CO.UK

GOAT MILL ROAD | DOWLAIS | MERTHYR TYDFIL | CF48 3TD

FOLLOW US ON TWITTER @SandGPrintGroup



## PERFORMANCE



### TRUE STRAYS

"The True Strays are a vintage loving, blues fuelled, dirty rock'n'roll band. Their live shows are a joyous hoedown of huge bass driven riffs, a howling tornado of resonator guitar, cacophonous drums and soaring hammond organ."

**30 May:** Brit Bar, 118 High Street, WESTON-SUPER-MARE, BS23 1HP. 9pm. 01934 623397.

#### REGINALD D HUNTER

**13 June**

Octagon Theatre, Hendford, YEOVIL, BA20 1UX. 8pm. £24 / £22. 01935 422884 / octagon-theatre.co.uk.

#### 'PRIDE & PREJUDICE'

**13 June**

Neeld Community and Arts Centre, CHIPPENHAM, SN15 3ER. 7.30pm. £17 / £12. 01249 446699 / neeld.co.uk.

#### 'CANTERBURY TALES'

**14 June**

Bridport Arts Centre, 9 South Street, BRIDPORT, DT6 3NR. 7.30pm. £17. 01308 424204 / bridport-arts.com.

"Brimming with verve and energy, Chaucer's well-loved stories are brought beautifully alive by students from Bristol Old Vic Theatre School."

#### 'FERAL'

**14 June**

Lighthouse, 21 Kingland Road, POOLE, BH15 1UG. 8pm. 01202 280000 / lighthousepoole.co.uk. See 9 June.

#### 'AND BEFORE I FORGET I LOVE YOU, I LOVE YOU'

**14 June**

Trowbridge Town Hall, Market Street, TROWBRIDGE, BA14 8EQ. 01225 774306 / townhallarts.co.uk. 7.30pm. £11 / £9. "This moving and affectionate performance is about the devastating effects of Alzheimer's disease, not only on the sufferer but on their family, friends and carers."

#### 'LAST TANGO IN LITTLE GRIMLEY'

**14 June**

Village Hall, Martock Road, LONG SUTTON, TA10 9NT. 7pm. £12 / £6. 01458 241335.

#### L'IL JIMMY REED + BOB HALL + HILARY BLYTHE

**14 June**

Ilminster Arts Centre, The Meeting House, East Street, ILMINSTER, TA19 0AN. 8pm. £16. 01460 54973. "Authentic blues."

#### TEZ ILYAS + WAYNE THE WEIRD + ANDY STEDMAN

**15 June**

Lighthouse, 21 Kingland Road, POOLE, BH15 1UG. 8pm. 01202 280000 / lighthousepoole.co.uk. Comedy.

#### GEORGE HINCHLIFFE'S UKULELE ORCHESTRA OF GREAT BRITAIN

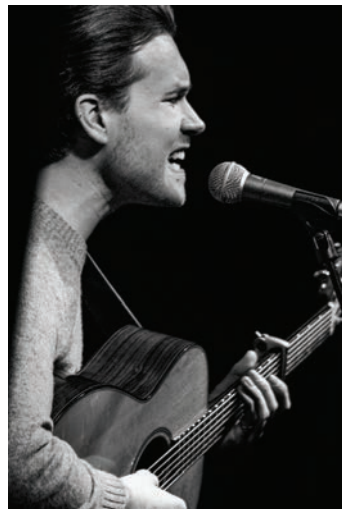
**15 June**

Octagon Theatre, Hendford, YEOVIL, BA20 1UX. 7.30pm. £26 / £24. 01935 422884. "Tap your toes with the royalty of the ukulele scene, the independent rock-stars of the 'bonsai guitar'."

#### TAUNTON DEANE MALE VOICE CHOIR

**15 June**

Tacchi-Morris Arts Centre, School Road, TAUNTON, TA2 7SH. 7.30pm. £10. 01823 414141.



#### LUKE JACKSON

**15 June**

Mission Hall, Mission Hall Lane, SUTTON POYNTZ, DT3 6LY. 7.30pm. £12. 01305 837299. "Folk, roots, blues, Americana and soul."

#### 'THE GLASS SLIPPER'

**15 and 16 June**

Lighthouse, 21 Kingland Road, POOLE, BH15 1UG. Saturday 1 and 7pm, Sunday 2pm. lighthousepoole.co.uk.

#### THE WYKE UKADELICS

**16 June**

Greenhill Gardens, The Esplanade, WEYMOUTH, DT3 6BH. 2pm. Free entry. greenhill-gardens.co.uk.

## GICLÉE PRINTS FROM PH MEDIA



A complete fine art prints service from A2 multi-level scanning or photography of artwork to packaging and fulfilment. All our colour accurate prints are produced to order and accredited to ArtSure® standards using a choice of museum grade archival paper and inks. Bespoke packaging and framing options are available. We also offer an online shop with no commission or web fees and we process payments that we forward to the client.

TO FIND OUT  
MORE CONTACT:  
Bill Davies  
07702 193737  
bill@phmedia.com  
phmedia.com

PH PRINTS FROM PH MEDIA



## Concerts IN THE West

CHAMBER MUSIC MINI-TOURS  
IN THE WEST COUNTRY

14 FEBRUARY TO 15 NOVEMBER 2019

BAROQUE TO CONTEMPORARY

2019 CHAMBER MUSIC MINI-TOURS IN  
DEVON, DORSET AND SOMERSET

BRIDPORT - CREWKERNE - ILMINSTER - LYME REGIS  
PENDOMER NR. YEOVIL - TAUNTON - WELLHAYES NR. WIVELISCOMBE



14, 15, 16 FEBRUARY  
14, 15, 16 MARCH  
4, 5, 6 APRIL  
2, 3, 4 MAY

13, 14, 15 JUNE  
4, 5, 6 JULY  
5, 6, 7 SEPTEMBER  
3, 4, 5 OCTOBER  
31 OCT, 1, 2 NOVEMBER  
15 NOVEMBER

TRIO SÖRA  
SARA DEBORAH & FRIENDS  
MÉLA GUITAR QUARTET  
ALASDAIR BEATSON  
& ELISSA CASSINI  
MORIARTY WINDS  
CLARE HAMMOND  
EUSEBIUS QUARTET  
NATHANIEL BOYD & SIMON LANE  
CONSONE QUARTET  
RUISI QUARTET

www.concertsinthewest.org

concertsinthewest@gmail.com - CATHERINE MADDOCKS director





CLASSICAL

## KOKORO A NIGHT IN VIENNA SUNDAY 12 MAY

Immerse yourself in an exquisite harmonic world of sound with the supremely talented Kokoro, Bournemouth Symphony Orchestra's contemporary music ensemble.



JAZZ

## JAZZ MEETS BROADWAY FRANK GRIFFITH & TINA MAY SATURDAY 8 JUNE

Songs of the Broadway and West End stage including Guys and Dolls, West Side Story and Company.



THEATRE

## PICASSO'S WOMEN FLYING ELEPHANT PRODUCTION SUNDAY 30 JUNE

A look at the great painter Picasso's early life through the voices of his wives, mistresses and muses, giving an insight into the influence the women had on his art.



CLASSICAL / COMEDY

## ALISTAIR MCGOWAN INTRODUCTIONS TO CLASSICAL PIANO FRIDAY 5 JULY

Expect a lot of beautiful music and more than a sprinkling of his trademark impressions in this show.

01305 266926

[www.dorchesterarts.org.uk](http://www.dorchesterarts.org.uk)

Charity No. 1015546



## PERFORMANCE



## BARBARA NICE: RAFFLE!

"Critically acclaimed tip-top character comedy."

**27 June:** Neeld Community and Arts Centre, CHIPPENHAM, SN15 3ER. 7.30pm. £14. 01249 446699 / [neeld.co.uk](http://neeld.co.uk).



## 'JAMES BOND SPECTACULAR'

17 - 22 June

Salisbury Arts Centre, Bedwin Street, SALISBURY, SP1 3UT. 7.30pm (Thursday and Saturday matinees 2.15pm). £27 / £13. [wiltshirecreative.co.uk](http://wiltshirecreative.co.uk). "Stephen Tomkinson stars in Willy Russell's hilarious and heart-warming comedy."

## JAZZ DANCE COMPANY: 'ICONIC'

19 June

Octagon Theatre, Hendford, YEOVIL, BA20 1UX. 7.30pm. £15 / £14. 01935 422884 / [octagon-theatre.co.uk](http://octagon-theatre.co.uk).

## BRISTOL OLD VIC THEATRE SCHOOL: 'THE CANTERBURY TALES'

20 June

The Exchange, STURMINSTER NEWTON, DT10 1FH. 7.30pm. £10 / £8. 01258 475137. "A colourful cast of characters set off for Canterbury, competing to tell their tales of love, lust, adventure and chivalry. Brimming with verve and energy, Chaucer's well-loved stories are brought beautifully and vividly to life by students from this prestigious Theatre School."

## 'THAT'LL BE THE DAY'

20 June

Octagon Theatre, Hendford, YEOVIL, BA20 1UX. 7.30pm. £27.50 / £25.50. 01935 422884 / [octagon-theatre.co.uk](http://octagon-theatre.co.uk).

## JAZZ DANCE COMPANY: 'ICONIC'

20 June

Lighthouse, 21 Kingland Road, POOLE, BH15 1UG. 7.30pm. 01202 280000.

## THE NOISE NEXT DOOR

20 June

Lighthouse, 21 Kingland Road, POOLE, BH15 1UG. 8pm. 01202 280000 / [lighthousepoole.co.uk](http://lighthousepoole.co.uk). "The cheeky, charming, chaotic comedy quartet pull out all the stops in their most creative, cutting edge and hilarious show yet."

## 'JAMES BOND SPECTACULAR'

21 June

Lighthouse, 21 Kingland Road, POOLE, BH15 1UG. 7.30pm. 01202 280000 / [lighthousepoole.co.uk](http://lighthousepoole.co.uk).

## 'FORBIDDEN NIGHTS'

21 June

Lighthouse, 21 Kingland Road, POOLE, BH15 1UG. 7.45pm. 01202 280000 / [lighthousepoole.co.uk](http://lighthousepoole.co.uk). "Two hours of thrilling action and provocative choreography."

## 'LES MUSICALS'

21 June

Octagon Theatre, Hendford, YEOVIL, BA20 1UX. 7.30pm. £57.50 / £25. 01935 422884 / [octagon-theatre.co.uk](http://octagon-theatre.co.uk).

## CLAIRE MARTIN

21 June

Bridport Arts Centre, 9 South Street, BRIDPORT, DT6 3NR. 7.30pm. £22. 01308 424204 / [bridport-arts.com](http://bridport-arts.com). "Claire Martin takes to the road with her all new Swedish trio."

## JOHN LAW RE-CREATIONS QUARTET

21 June

Ilminster Arts Centre, The Meeting House, East Street, ILMINSTER, TA19 0AN. 8pm. £15. 01460 54973. "Jazz, pop and classical tunes."

## CARISMÁTICO TANGO BAND

21 June

Dorchester Arts, The Corn Exchange, High East Street, DORCHESTER, DT1 1HF. 7.30pm. £14 / £12. 01305 266926. "Enjoy a night of Latin American musical virtuosity, passion and dance."

## THE ZOOTS: 'SOUNDS OF THE '80S'

22 June

Bridport Arts Centre, 9 South Street, BRIDPORT, DT6 3NR. 7.30pm. £18. 01308 424204 / [bridport-arts.com](http://bridport-arts.com).



## OCTAGON THEATRE

### EMMA JOHNSON & GILDAS QUARTET WEDNESDAY 22 MAY

Haydn - Quartet Op.33 No.1  
Weber - Clarinet Quintet  
Mozart - Clarinet Quintet



### MARGOT FONTEYN: CENTENARY CELEBRATION

SUNDAY 26 MAY

Join Ballet Theatre UK as we mark the centenary of the great ballet icon with a celebration of her greatest moments in the classical ballet repertoire.



### REGINALD D HUNTER

THURSDAY 13 JUNE

Highly anticipated new show.

### UKULELE ORCHESTRA OF GREAT BRITAIN

SATURDAY 15 JUNE

Who is to blame for the worldwide phenomena of ukulele orchestras and ukulelemania? The Ukulele Orchestra of Great Britain!



### JAZZ DANCE COMPANY: ICONIC

WEDNESDAY 19 JUNE

An epic celebration of current and historical movements, moments and figures.



BOX OFFICE: 01935 422884

BOOK ONLINE:

[www.octagon-theatre.co.uk](http://www.octagon-theatre.co.uk)

OCTAGON THEATRE

Hendford, Yeovil, Somerset BA20 1UX



# PERFORMANCE

## 'THE LADYBOYS OF BANGKOK'

**22 June**  
Octagon Theatre, Hendford, YEOVIL,  
BA20 1UX. 8pm. £25 / £23.50. 01935  
422884 / octagon-theatre.co.uk.

## BRISTOL OLD VIC THEATRE SCHOOL: 'THE CANTERBURY TALES'

**22 June**  
The Beehive, Dowell Street, HONITON,  
EX14 1LZ. 7.30pm. £15 / £12. 01404  
384050. See 20 June.



## CARA DILLON

**22 June**  
Dorchester Arts, The Corn Exchange,  
High East Street, DORCHESTER, DT1  
1HF. 7.30pm. £22 / £20. 01305 266926.  
"This extraordinary Irish singer has  
been captivating audiences for over 20  
years. Alongside a selection of  
favourites from her previous releases,  
Cara will be performing material from  
her new album 'Wanderer' which is a  
collection of beautiful and moving  
songs recorded in an intimate setting  
with her husband and musical partner  
Sam Lakeman."

## THE HANDLEBARDS: 'THE TEMPEST'

**23 June**  
Maumbury Rings, Maumbury Road,  
DORCHESTER, DT1 1QN. 6pm. £13 /  
£11. 01305 266926. "Expect riotous  
amounts of energy, a fair old whack of  
chaos, and laughter, magic, musicality  
and mystery a plenty. Bring a chair and  
a picnic!"

## GRAND RE-UNION

**23 June**  
Greenhill Gardens, The Esplanade,  
WEYMOUTH, DT3 6BH. 2pm. Free  
entry. greenhill-gardens.co.uk.

## SHEBA SOUL ENSEMBLE: 'SOLD'

**24 June**  
Tacchi-Morris Arts Centre, School Road,  
TAUNTON, TA2 7SH. 7.30pm. £13 / £9.  
01823 414141 / tacchi-morris.com.

## TONY WALLER AND HIS PROHIBITION JAZZ

**24 June**  
Bluebird Social Club, 4 Ham Lane,  
LONGHAM, BH22 9DP. 7.30pm. £10 /  
£12. 01202 873071. Jazz.



## A HUNDRED DIFFERENT WORDS FOR LOVE

"James Rowland's hilarious follow up to 'Team Viking' recounts how he found and lost the love of his life then tried to find the right words to make sense of love while discharging his duties as Best Man of Honour at Sarah and Emma's wedding."

**22 June:** Lighthouse, 21 Kingland Road, POOLE, BH15 1UG. 8pm. 01202 280000 / lighthousepoole.co.uk.

## PAUL YOUNG

**25 June**  
Octagon Theatre, Hendford, YEOVIL,  
BA20 1UX. 8pm. £43.50 / £31. 01935  
422884 / octagon-theatre.co.uk.

## MARTI PELLOW

**26 June**  
Lighthouse, 21 Kingland Road, POOLE,  
BH15 1UG. 7.30pm. 01202 280000.

## THE NEW HARDY PLAYERS: 'FAR FROM THE MADDING CROWD'

**27 June**  
Max Gate, Alington Avenue,  
DORCHESTER, DT1 2FN. 7.15pm.  
01305 266926. "With over 50 actors  
and musicians, the ever popular New  
Hardy Players bring to life the colourful  
local characters of Weatherbury. Bring  
a picnic plus chair or blanket!"

## 'THE SWIMMER'

**27 June**  
Lighthouse, 21 Kingland Road, POOLE,  
BH15 1UG. 8pm. 01202 280000. "A  
comic, one-woman physical theatre  
show about swimming to France with  
dollops of goose fat and a glint of  
foolhardy eccentricity."

## 'LAUGHING BOY COMEDY CLUB'

**27 June**  
Westlands Entertainment Venue,  
Westbourne Close, YEOVIL, BA20 2DD.  
8pm. £10 / £9. 01935 422884.

## 'THE THREE MUSKETEERS'

**27 and 28 June**  
Tacchi-Morris Arts Centre, School Road,  
Taunton, TA2 7SH. 7.30pm. £16 / £11.  
01823 414141 / tacchi-morris.com.

## ANGELA BARNES

**28 June**  
Bridport Arts Centre, 9 South Street,  
BRIDPORT, DT6 3NR. 7.30pm. £15.  
bridport-arts.com. Comedy.

## THE NEW HARDY PLAYERS: 'FAR FROM THE MADDING CROWD'

**28 and 29 June**  
Subtropical Gardens, Buller's Way,  
ABBOTSBURY, DT3 4LA. 7.30pm.  
01305 266926. See 27 June.

## 'JANE EYRE'

**29 June**  
Bridport Arts Centre, 9 South Street,  
BRIDPORT, DT6 3NR. 7.30pm. £15 /  
£14. 01308 424204. "Adaptation of the  
classic novel."

## BRISTOL OLD VIC THEATRE SCHOOL: 'THE CANTERBURY TALES'

**29 June**  
Village Hall, FRAMPTON, DT2 9NF  
£10 / £8. 07968 586906. See 20 June.



## 'PIRATES OF PENZANCE'

**29 June**  
Martock Church, MARTOCK, TA12 6JL.  
7.30pm. £12 / £10. 01935 829756.  
"Bath Gilbert & Sullivan Society in a  
fully-costumed-performance."

## THE SILHOUETTES

**30 June**  
Greenhill Gardens, The Esplanade,  
WEYMOUTH, DT3 6BH. 2pm. Free  
entry. greenhill-gardens.co.uk.



## BRIDPORT TIMES

A MONTHLY CELEBRATION OF PEOPLE, PLACE AND PURVEYOR

OUT NOW  
AND ONLINE

bridporttimes.co.uk



# CLASSIFIEDS

## OPPORTUNITIES

● **Calling all artists! Evolver Prize 2019:** Artists, photographers and designers are invited to submit actual cover size 2D work in any media for selection for the front cover of Evolver 112 (July and August 2019 issue) plus £1,000. The judges will also select an additional 49 works for a Top 50 Exhibition at the Thelma Hulbert Gallery (6 July - 31 August) and publication in Evolver 112. Deadline Thursday 16 May 2019. See page 31 or [evolver.org.uk/evolver-prize](http://evolver.org.uk/evolver-prize) for further details and entry form.

● **Exeter Contemporary Open 2019.** We are now inviting submissions from UK artists for the 2019 Exeter Contemporary Open. The exhibition will run from 20 September to 10 November 2019 and is open to contemporary visual artists working in any media including painting, sculpture, photography, print, drawing, video, mixed and digital media. Artists should make submissions that reflect their current practice and the selection panel will particularly be looking for work that addresses current themes and concerns in contemporary practice. This year's panel will include critic and curator Sacha Craddock and artist and 2006 Turner Prize nominee Mark Titchner as well as Phoenix Gallery Curator Matt Burrows. 01392 667080 / [art@exeterphoenix.org.uk](mailto:art@exeterphoenix.org.uk) / [exetercontemporaryopen.com](http://exetercontemporaryopen.com). Application deadline: Monday 17 June. Fee £15 / £20.

● **The Mothership: Artist Residencies in Rural Dorset 2019.** The Mothership project, which emerged in 2016 in rural Dorset from the cosmic skies of rural loneliness juxtaposed with the contained space of the domestic sphere, is an invitation for the chance encounters of the urban art world to occur in this unlikely location, a house at the edge of a wood. The Mothership is an offering of time and space for artists without pressure to produce anything particular. This is a social art project, an experiment in autonomy and scale, exploring the relationship between host and guest and the exchange that may occur. This is an unpaid residency

opportunity and a fee is charged to cover overheads. Deadline Friday 20 December 2019. Please see [annabest.info/residencies/](http://annabest.info/residencies/) for further information on how to apply.

● **Teignmouth Sculpture Trail.** Open call for works made from a minimum of 70% recycled material. Opportunities for outdoor sculptures and smaller items for gallery exhibition. Deadline Sunday 23 June. Installation dates 20 - 23 July. Sculptures to be removed from 1 - 8 September. For full details of sculpture trail, submission details and artists prizes visit [trailart.co.uk](http://trailart.co.uk).

## WORKSHOPS AND COURSES

● **Cyanotype Printing Workshops.** Make gorgeous blue prints, lampshades, table lanterns. No previous skills needed. Location / time to suit you. Materials provided. From £25. 01305 837299 / [www.craftcourses.com/providers/sunlight-blue-cyanotype-lampshade-workshops](http://www.craftcourses.com/providers/sunlight-blue-cyanotype-lampshade-workshops).

● **Creative stone carving weekends** in the beautiful Mendip Hills. Please look at my website: [patrickbarkersculptor.co.uk](http://patrickbarkersculptor.co.uk) for details and info.

● **Flux'n'Flame Jewellery School:** Now one of the largest independent jewellery schools in the UK offering an ever expanding range of traditional jewellery making courses from 1 day tasters, weekend courses and weekly classes to a 6 day Summer School and specialist masterclasses. Taught by professional jewellery designers and set in a beautiful purpose built workshop in the heart of the Dorset countryside near Milton Abbas. [www.fluxnflame.co.uk](http://www.fluxnflame.co.uk). For more info please call Jesa on 01258 881690 / 07785 550771.

● **Life Drawing, Exeter.** Untutored sessions, Sundays 10am - 12.30pm. £9. 01392 273744 / [adrian@afgwyatt.plus.com](mailto:adrian@afgwyatt.plus.com).

● **Residential Basketry and willow-work** courses for beginners to advanced makers with traditional and contemporary willow artist Sarah Webb. Booking at [www.halswaymanor.org.uk](http://www.halswaymanor.org.uk).

● **Bookbinding courses and workshops** in Butleigh near Glastonbury. See [booklove.wixsite.com/website](http://booklove.wixsite.com/website) for info.

● **Hand bookbinding workshops** with Paul Taylor, an accredited Book and Paper Conservator of 32 years' experience, at Spiral Path Book Studio in Langport. Relaxed and informative bookbinding tuition in our studio, maximum 5 per class, introductory to advanced classes. Please see website for details ([www.spiralpathbooks.uk](http://www.spiralpathbooks.uk)) or email for details and enrolment form ([info@spiralpathbooks.uk](mailto:info@spiralpathbooks.uk)).

## MISCELLANEOUS

● **For Sale:** Simair Mini Air Compressor complete with two airbrushes, cleaning pot and stand, in excellent order, little used. £60, no offers. Tel: 07590 030862.  
● **Wanted:** Classical and Jazz LP records. Tel: 01458 834102 / 07704 229979 / email: [tonyartony@aol.com](mailto:tonyartony@aol.com).

● **Art Class Business For Sale.** Sale of successful art class business based in Dorchester. Would suit someone looking for a flexible part time business with great returns. Art tutor employed to take classes. Interest in art needed and strong organisational/admin skills. For more information, call 07736 832853.

● **Male life model** based in Wimborne, Dorset looking for work. If interested, please email [tomlloydfrancis@gmail.com](mailto:tomlloydfrancis@gmail.com) or call 07985 374926.

● **Experienced professional female model.** Available in Poole and Bournemouth Area. Contact Lilly: 0780 4020 735.

● **White Stones Studio, Portland.** Newly purpose-built studio and three eco holiday studios for rent. We are offering a range of workshops in this light, airy studio adjacent to the White Stones Art Café. Including: Mosaics, Silver Jewellery, Stone Carving, Encaustic Wax, Painting and Meditative Therapies. Taught by experienced tutors. We are continually adding to the range of workshops on offer. Space available to hire for tutors. For more info see [www.whitestonesportland.com](http://www.whitestonesportland.com) or call David on 07769 557649.

● **Books Wanted.** We buy all types of books, particularly 20th century Art, Architecture and Design. Telephone Karen Jakobsen: 01258 471249.

● **To achieve the best price for your work** you need the highest quality prints. As an award-winning fine art printer we can help you achieve that goal. Call John Roland on 01747 852221. [www.salt-of-the-earth.biz](http://www.salt-of-the-earth.biz).

● **Wellbeing Retreats at Halsway Manor.** Yoga, walking in the Quantocks and creative play with Tracey Roberts BWY. Mid-week residencies in July and October. Details at [www.halswaymanor.org.uk](http://www.halswaymanor.org.uk).

● **Very experienced and professional male model** for life drawing, portrait, sculpture and photo shoots with large array of costumes and props. Car owner and willing to travel. Reasonable rates. Contact [geoffreyallen3@gmail.com](mailto:geoffreyallen3@gmail.com) / 07816 997732.

● **Life Model.** Male, experienced, reliable, own car, travel anywhere, Dorset. Tutored / untutored. 07770 618089 or [anu.now78@gmail.com](mailto:anu.now78@gmail.com).

● **DEADLINE FOR EVOLVER 112** (July and August issue): FRIDAY 7 JUNE

## FREE EVOLVER LISTINGS

**Exhibition and performance listings should be emailed to:** [listings@evolver.org.uk](mailto:listings@evolver.org.uk)

Please supply information (in upper and lower case) in the following order: Event. Date(s). Venue, address (including postcode). Times. Admission fee (if any). Contact number / website. Up to 30 words about the event.

## EVOLVER CLASSIFIEDS

**20p per word • Add £5 for BOX • Add £10 for RED BOX**

1) Email to [classifieds@evolver.org.uk](mailto:classifieds@evolver.org.uk)

2) Send cheque (payable to 'Evolver Media') to:

EVOLVER CLASSIFIEDS, EVOLVER MEDIA, 8 BUCKLAND ROAD, PEN MILL TRADING ESTATE, YEOVIL, SOMERSET BA21 5EA

**Foundation Degree Contemporary Fine Art Practice**

**CREATIVE & VISUAL ARTS**  
[www.weymouth.ac.uk](http://www.weymouth.ac.uk)

**WEYMOUTH COLLEGE**

**IN PARTNERSHIP WITH**

**UNIVERSITY OF PLYMOUTH**

**APPLY NOW TO STUDY**

**Foundation Degree Contemporary Photography Practice**





## CURATING PRIVATE ART COLLECTIONS

SYMPOSIUM  
FRIDAY 5 JULY 2019  
11 AM – 4 PM

A one-day symposium exploring the practice of private collecting with a specially invited panel of five international curators.

Ticket price includes refreshments and a two-course lunch at Roth Bar & Grill. Purchased before 1 June 2019 – £80. Purchased after 1 June 2019 – £100. Concessions available.

[www.hauserwirth.com.events](http://www.hauserwirth.com.events) +44 (0) 1749 814 060

## framing, printing, installation

[www.mount-art.co.uk](http://www.mount-art.co.uk) | 01373 473894



08:10

< September

Mon 24 Sep

What's happening?

My paintbrush just flicked off the desk and landed in the fish tank...

Chirp

8 AM

9 AM

10 AM

11 AM

NOON

1 PM

2 PM

3 PM

4 PM

5 PM

6 PM

# FREE CULTURE+ RESOURCES AND TEMPLATES FOR ARTISTS AND CREATIVES

[THEARTSDEVELOPMENTCOMPANY.ORG.UK](http://THEARTSDEVELOPMENTCOMPANY.ORG.UK)

f t i p

Pictured: How to time manage your social media

Other resources include invoice templates, how to build your website, printable year planners and more

THE ARTS  
DEVELOPMENT  
COMPANY

Culture+

Illustration by Bridie Cheeseman

Funded by:

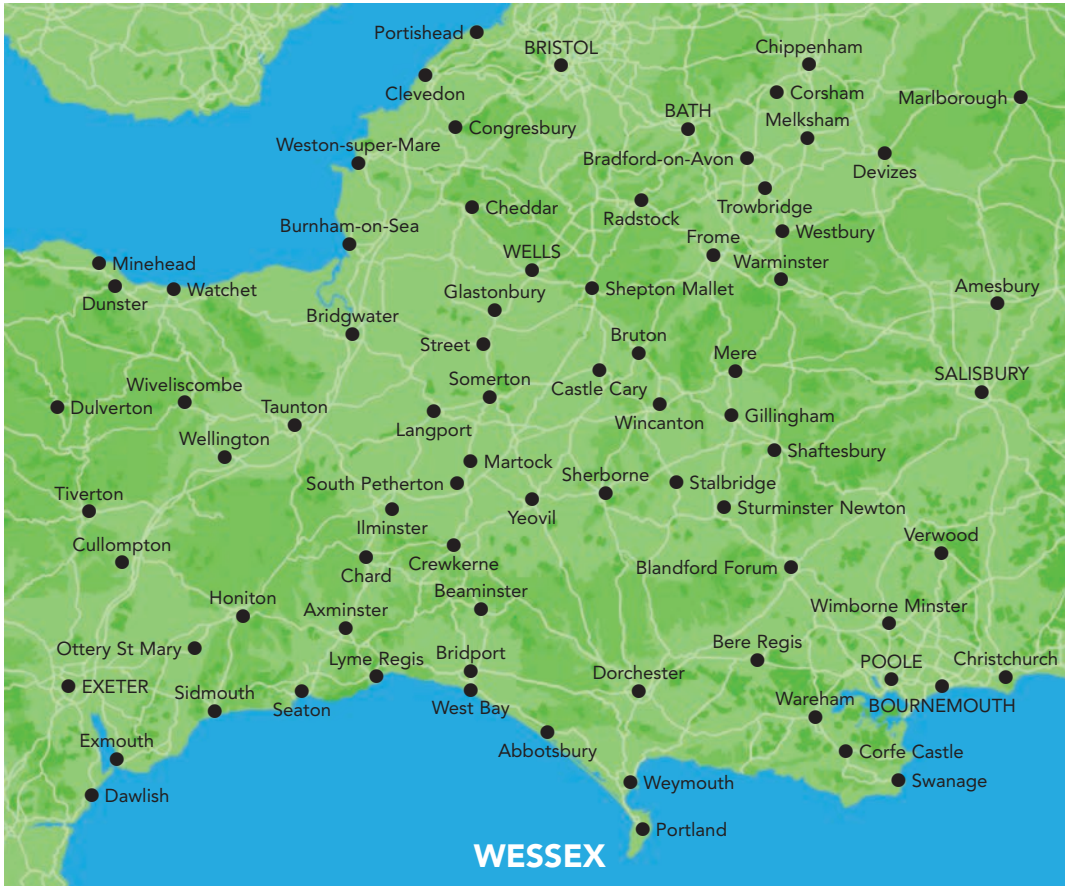
European Union  
European Regional  
Development Fund

Supported using public funding by

ARTS COUNCIL  
ENGLAND



# EVOLVER SPONSORS AND OUTLETS



**EVOLVER IS AVAILABLE FREE AT THE FOLLOWING WESSEX OUTLETS:**

**ABBOTSBURY:** Dandel Gallery. **AXMINSTER:** Axminster Arts Café, Sublyme Café. **BATH:** Action for Hearing Loss, Art Salon, Bath Artists' Studios, Beaux Arts, David Simon Gallery, Edgar Modern Gallery, Fringe Arts, Holburne Museum of Art, Michael Tippett Centre, University of Bath, Victoria Art Gallery. **BERE REGIS:** Cyril Wood Court. **BLANDFORD:** Bryanston Arts Centre, Forum Café, Forum Framers. **BOURNEMOUTH:** All Fired Up, Artcetera, Flux Art Supplies, Miramar Hotel, Pavilion Dance, Royal Bath Hotel, Russell-Cotes Museum & Art Gallery. **BOWER HINTON:** The Hollies Hotel. **BRADFORD ON AVON:** Wiltshire Music Centre. **BRIDGWATER:** Bridgwater Arts Centre, Clayhill Arts, Engine Room. **BRIDPORT:** Beach & Barnicott, Bridport Arts Centre, Bridport Old Books, Bridport Music, The Bull Hotel, Clocktower Music, Literary and Scientific Institute, Lyric Theatre, St Michael's Studios. **BRISTOL:** Bocabar, Bristol Fine Art, Centrespace, Colston Hall, Create Centre, Folk House, Jamaica Street Artists, Lime Tree Gallery, Bristol Old Vic, PRSC Gallery, RWA, Spike Island, St George's, Tobacco Factory, Trinity Centre, UWE, Watershed. **BROADWINDSOR:** Craft & Design Centre. **BRUTON:** Bruton Art Factory, Bruton Castle, At The Chapel, Hauser and Wirth. **BUDLEIGH SALTERTON:** Brook Gallery. **BURNHAM ON SEA:** Princess Theatre & Arts Centre, Seabreeze Gallery. **CASTLE CARY:** Bailey Hill Bookshop, Clerkenwell Fine Art, Trowbridge Gallery. **CHARD:** Art Café, Barleymow's, Hornsbury Mill Hotel. **CHEDDAR:** Sketch Café. **CHEDDON FITZPAINE:** Hestercombe Gallery. **CHRISTCHURCH:** Hatch Gallery, Hayloft Gallery, Red House Museum, Regent Centre. **CLEVEDON:** Fizz Gallery. **CONGRESBURY:** Church House Designs. **CORFE CASTLE:** Boilerhouse Gallery, Gallery 41, Morton House Hotel. **CORSHAM:** Pound Arts. **CREWKERNE:** Phoenix Books. **CROCKERTON:** Bull Mill Arts. **CROWCOMBE:** Halsway Manor. **CULLOMPTON:** Cullompton Community College. **CULMSTOCK:** The Strand Stores. **DEVIZES:** Bluestone Gallery, St John's Art & Deco, Wiltshire Museum, Wine Street Gallery. **DORCHESTER:** Artsreach, Dorchester Arts, Duke's, Dorset County Museum, Frank Herring & Sons, Gallery on The Square, The Little Keep. **EAST LAMBROOK:** East Lambrook Manor Gardens.

**EXETER:** Academy of Music, Boston Tea Party, The Cavern, Corn Exchange, Exeter School of Art, Phoenix Arts Centre, Royal Albert Memorial Museum, Southgate Gallery, Unearth. **FROME:** Black Swan Arts, Cheese and Grain, Fiat Lux, Hubnub Centre, Merlin Theatre, Mount, Rook Lane Arts. **GILLINGHAM:** Bowridge Gallery, The Idea Works, Slade Centre. **GLASTONBURY:** Abbey Muse Gallery, Bocabar, Glastonbury Galleries, Red Brick Building, Rural Life Museum. **HEMYOCK:** Healthy Living Centre. **HIGHCLIFFE:** In The Frame. **HOLTON HEATH:** Holton Lee. **HONITON:** The Beehive, Boston Tea Party, Hybrid Gallery, Strummer Pink, Thelma Hulbert Gallery. **ILMINSTER:** Dillington House, Ilminster Arts Centre, Millhouse. **LANGPORT:** 4 Every Cloud, Art Tea Zen, Shakspeare Glass, Somerset Art Works. **LANGTON MATRAVERS:** Burngate Stone Carving Centre. **LYME REGIS:** Blue Lias, Coombe Street Gallery, Fine Art Framing, Marine Theatre, Studio 19, Town Mill. **MARLBOROUGH:** Framemakers. **MARTOCK:** 303 Gallery, Martock Gallery. **MERE:** Beaumont Gallery. **MILDENHALL:** Rabley Contemporary Drawing Centre. **MILTON ABBAS:** Dorset Crafty Barn, Flux'n'Flame. **MINEHEAD:** Courtyard Framing, Leo Davey Gallery, Regal Theatre. **MORCOMBELAKE:** Artwave West. **MUCHELNEY:** John Leach Gallery. **NEW MILTON:** Forest Arts. **NORTH CURRY:** Community Café. **OTTERTON:** Otterton Mill. **POOLE:** Arts University Bournemouth, Bournemouth University Atrium Gallery, Guildhall Gallery, Josephine Wall Gallery, Lighthouse, The Gallery Upstairs, Poole Museum. **PORLOCK:** Churchgate Gallery, Melody Art. **PORTLAND:** B-Side Outpost, White Stones. **SALISBURY:** City Hall, Fisherton Mill, Framemakers, Noble Art Supplies, Salisbury Arts Centre, Salisbury Museum, Salisbury Playhouse, Studio 53, Wiltshire Gallery, Young Gallery. **SEATON:** Arts Café. **SEAVINGTON:** Village Shop. **SHAFTESBURY:** The Cygnet, Grosvenor Hotel, Salt of the Earth, Shaftesbury Arts Centre. **SHEPTON MALLET:** One Craft Gallery. **SHERBORNE:** Artslink, Jerram Gallery, New Digby Hall, Old Barn Framing Gallery, Winstone's. **SIDMOUTH:** East Devon Art Academy, Flo and Us, Kennaway House, Winstone's. **SOMERTON:** ACE Arts, Gifted Company & Gallery Coffee Shop. **SOUTH CADBURY:** Chapel Cross Tea Rooms. **SOUTH PETHERTON:** David Hall. **STALBRIDGE:** Dike

& Sons. **STOKE ST GREGORY:** Willows & Wetlands Centre. **STOURHEAD:** First View Gallery. **STREET:** Millfield School Atkinson Gallery, Strode Theatre. **STURMINSTER NEWTON:** The Exchange, Poet's Corner, Wessex Photographic. **SWANAGE:** Durlston Castle, L'Artisat Gallery, Little Green Gallery, Mowlem Theatre, Mulberry Bush Gallery, Purbeck New Wave Gallery, Quarr Gallery, Sansom Gallery. **TAUNTON:** Brewhouse Theatre, CIC CIC, Framers, Ginger Fig, Jane Amour, Mount Somerset Hotel, Queen's College, Tacchi-Morris Arts Centre, University Centre Somerset. **TINCLETON:** Tincleton Gallery. **TISBURY:** Messums Wiltshire. **TIVERTON:** Lantic Gallery. **TROWBRIDGE:** Arc Theatre, The Lamb, Trowbridge Arts. **VERWOOD:** The Hub. **WAREHAM:** Creative Gallery, Furzebrook Studios, Priory Hotel, Rex Cinema. **WATCHET:** Contains Art. **WELLINGTON:** Old Brick Workshop. **WELLS:** A2 Gallery, Andelli Art, Good Earth, Heritage Courtyard Studios, Somerset Guild of Craftsmen Gallery and Shop. **WEST BAY:** Sladers Yard. **WEST COKER:** Lanes, Old School Room. **WESTHAY:** Somerset Crafts. **WESTON-SUPER-MARE:** Frame Station, LT Gallery, Playhouse, Weston College. **WEYMOUTH:** Gallery on The Wey, Leighton Gallery, Weymouth College, Weymouth Pavilion. **WILLITON:** Breeze Art Gallery. **WIMBORNE:** Allendale House, Square Records, Walford Mill Craft Centre. **WOODBURY:** Woodbury Studio Gallery. **WORTON:** Old Mill Gallery. **WRINGTON:** Barleywood Studios. **YEovil:** Octagon Theatre. **YETMINSTER:** Old School Gallery. Plus selected TOURIST INFORMATION CENTRES and LIBRARIES throughout Wessex.

**EVOLVER IS SPONSORED BY:**

ACE Arts • Acoustic Distribution  
The Arts Development Company  
Atkinson Gallery • Aztec Media • B-Side  
Black Swan Arts • Boilerhouse Gallery  
Bridport Arts Centre • Caldecourt Productions  
The Creative Gallery • Dorchester Arts  
Dorset Visual Arts • Lighthouse • Mount  
Octagon Theatre • PH Media  
Sladers Yard • Somerset Art Works  
Stephens & George • Thelma Hulbert Gallery  
Tincleton Gallery • Walford Mill Crafts  
Weymouth College • Wiltshire Creative

**ACE ARTS**

ACOUSTIC DISTRIBUTION

THE ARTS  
DEVELOPMENT  
COMPANY

**Atkinson GALLERY**

**aztecmedia**  
creative marketing solutions

**b-side**



BLACKSWANARTS

**Boilerhouse GALLERY**

BRIDPORT  
ARTSCENTRE

**caldecourt  
productions**

**THE CREATIVE GALLERY**

**DorchesterARTS**

**DORSET VISUAL ARTS**

**Lighthouse**  
POOLE'S CENTRE FOR THE ARTS



mount

**OCTAGON  
THEATRE**

**PH MEDIA**

**SLADERS YARD**

**SCW  
somer  
set  
art works**

**S&G**  
STEPHENS & GEORGE

**THG**  
Thelma  
Hulbert  
Gallery

**Tincleton Gallery**

**walfordmill  
crafts**

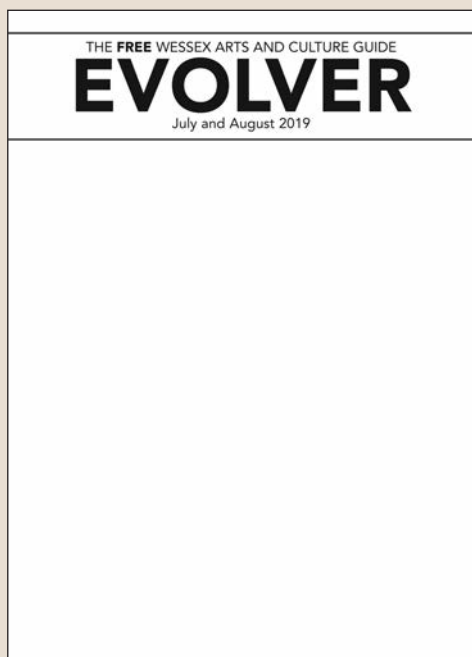
**W**  
WEYMOUTH  
COLLEGE

**WILTSHIRE  
CREATIVE**



# EVOLVER PRIZE 2019

**FIRST PRIZE: EVOLVER 112 FRONT COVER + £1,000**



ARTISTS, PHOTOGRAPHERS and DESIGNERS are invited to submit actual cover size 2D work in any media for selection for the **FRONT COVER OF EVOLVER 112** (July and August 2019 issue) + **£1,000**

The judges will also select an additional 49 WORKS for a **TOP 50 EXHIBITION** at the THELMA HULBERT GALLERY, Honiton (6 July - 31 August) and publication in EVOLVER 112

#### JUDGES:

**Simon Barber** (Editor, Evolver)

**Adrian Boot** (Photographer)

**Ruth Gooding** (Curator, THG)

**Dr Fran Norton** (Artist / Educator)

**DEADLINE: THURSDAY 16 MAY 2019**

Further information:

[evolver.org.uk/evolverprize](http://evolver.org.uk/evolverprize)

[prize@evolver.org.uk](mailto:prize@evolver.org.uk)



**EVOLVER**

NAME
ADDRESS
POSTCODE
TELEPHONE
EMAIL

## EVOLVER PRIZE 2019 ENTRY FORM

TITLE OF WORK	MEDIUM	SELLING PRICE *
1		
2		
3		

I ENCLOSE MY SUBMISSION FEE (£10 PER WORK)

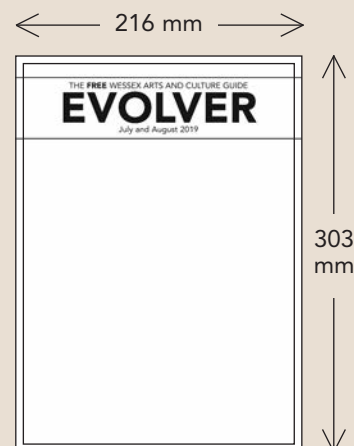
£

\* EVOLVER will take a 40% commission from this price if the work is exhibited and sold

Send ARTWORK + CHEQUE (payable to 'EVOLVER MEDIA') + SAE FOR RETURN OF ARTWORK to:  
EVOLVER PRIZE 2019, EVOLVER MEDIA, 8 BUCKLAND ROAD, PEN MILL TRADING ESTATE, YEOVIL,  
SOMERSET BA21 5EA

**DEADLINE: THURSDAY 16 MAY 2019**

☐ Please tick box if you do not wish to be added to the Evolver and Thelma Hulbert Gallery mailing lists



#### SUBMISSIONS

- The image size of all submitted work must measure 216 x 303 mm (the actual size of Evolver's front cover plus an extra 3 mm all round)
- The work should be an unframed original artwork or high quality print that can be sold at the exhibition
- Up to 3 works may be submitted
- A submission fee of £10 per work will be charged
- Please also supply a stamped addressed envelope for return of artwork

#### PLEASE NOTE

The judges will definitely not be looking for a particular style of work. The work submitted should be anything that you believe would make a great front cover



**FREE**

# DORSET MOON

FEATURING **LUKE JERRAM'S  
MUSEUM OF THE MOON**

Experience **FREE** lunar-inspired events  
across Dorset that are out of this world!



**28 — 30 JUNE**

CENTRAL GARDENS  
BOURNEMOUTH



**5 — 7 JULY**

SHERBORNE ABBEY  
SHERBORNE



**12 — 14 JULY**

NOTHE FORT  
WEYMOUTH

**DORSETMOON.COM**

#DorsetMoon  
#MuseumOfTheMoon

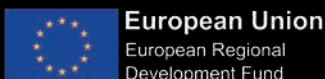
PRODUCED BY:



COMMISSIONED BY:



FUNDED BY:



Supported using public funding by  
**ARTS COUNCIL  
ENGLAND**

Image credit:  
Culture Liverpool, photograph by  
Gareth Jones at Liverpool Cathedral.